

Subject: [radiojove-data] 15 Jan 2014 non-Io-A

From: Dave Typinski <davetyp@typnet.net>

Date: 01/15/2014 22:52

To: RadioJove-Data <radiojove-data@lists.nasa.gov>

Adding to Tom's nice report, here's Wednesday morning's non-Io-A.

All RCP L bursting from 17 to 23 MHz. No modulation lanes at all.

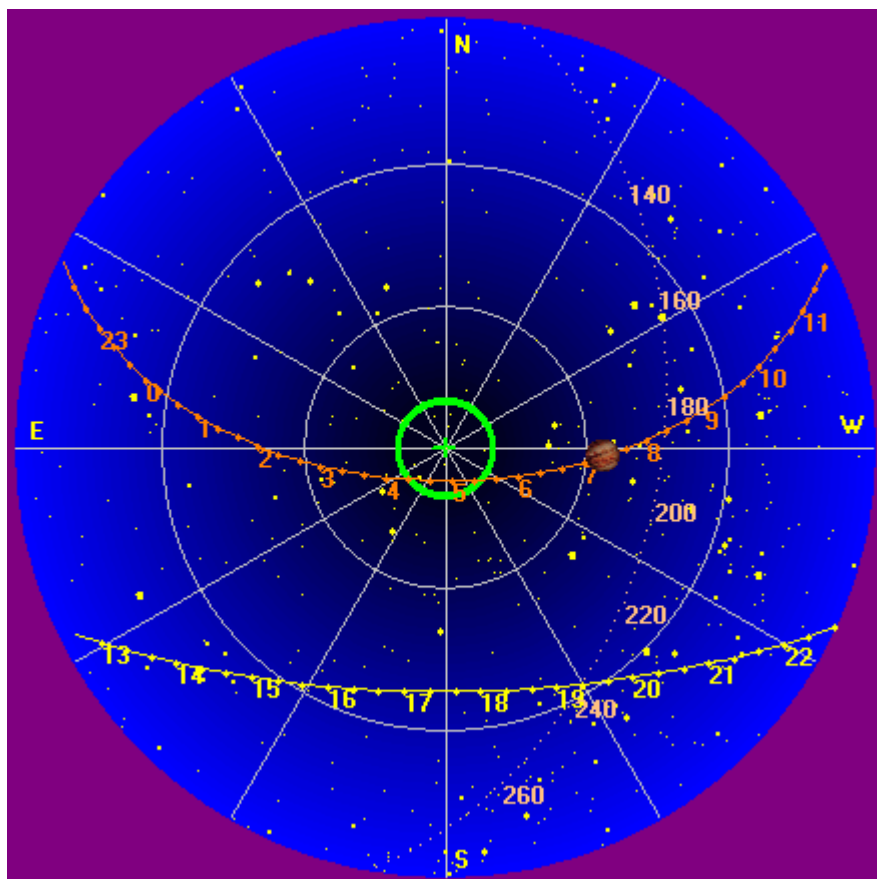
Jupiter was off axis from 28° to 37°.

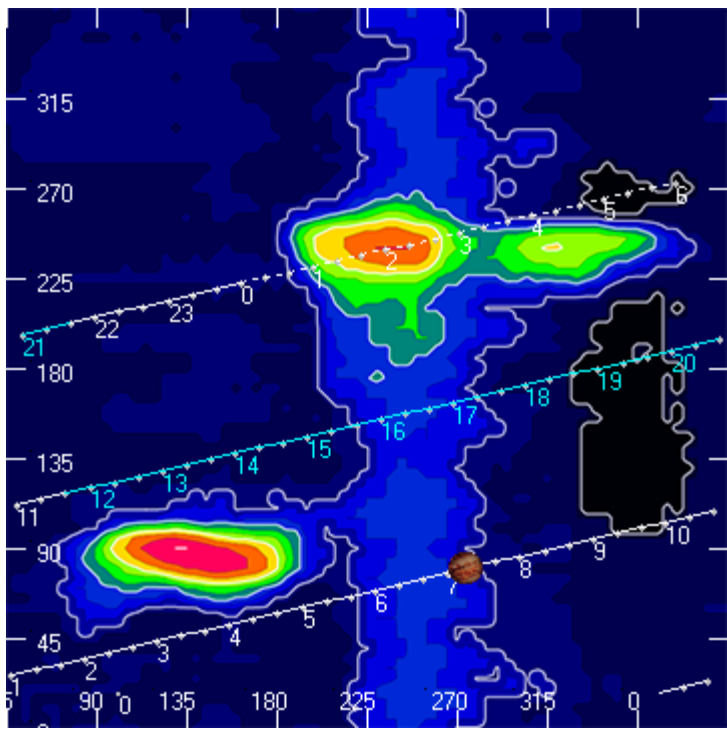
Jupiter was trailing the Sun by 169°.

--

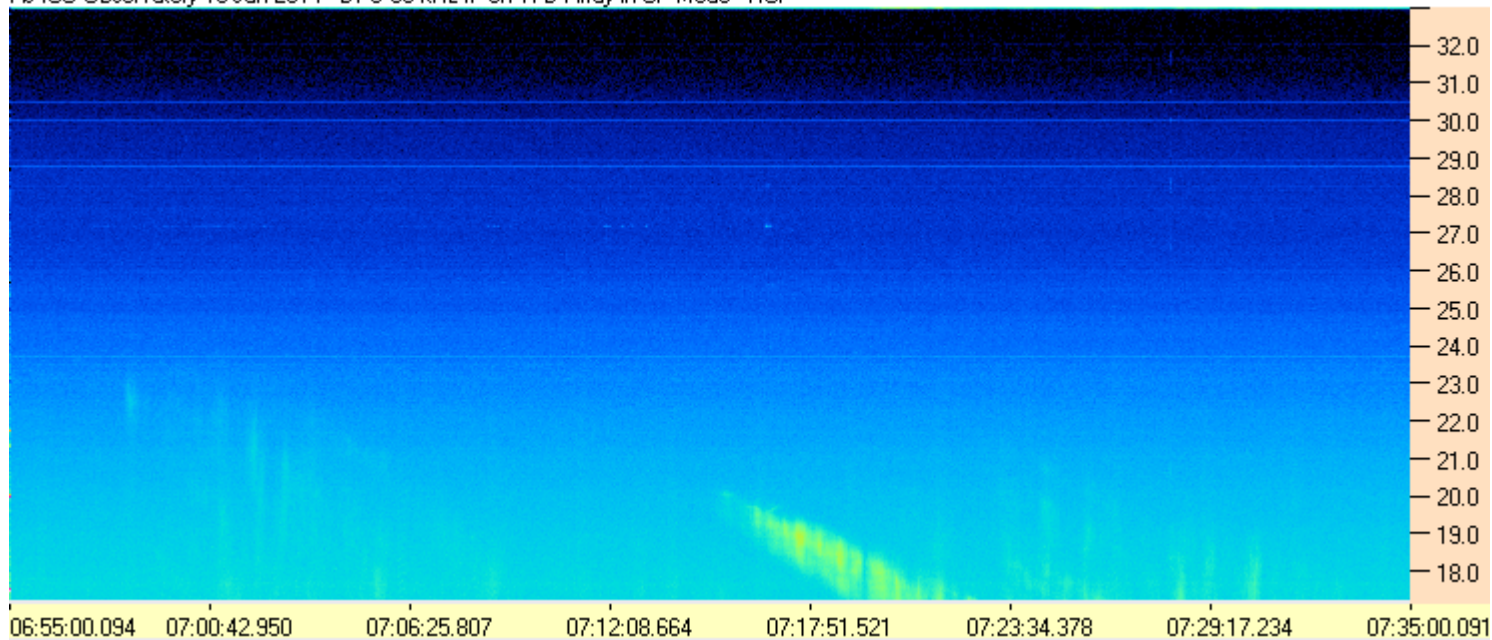
Dave

AJ4CO Observatory, 15 Jan 2014

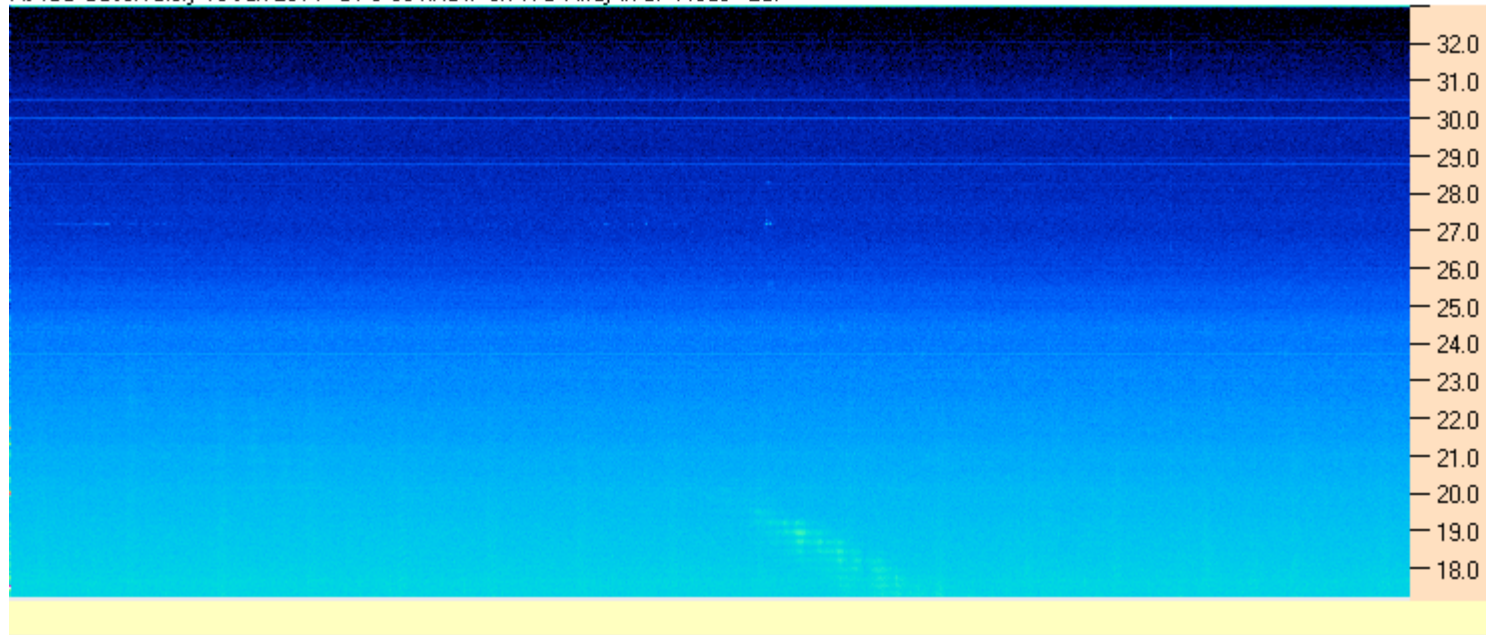




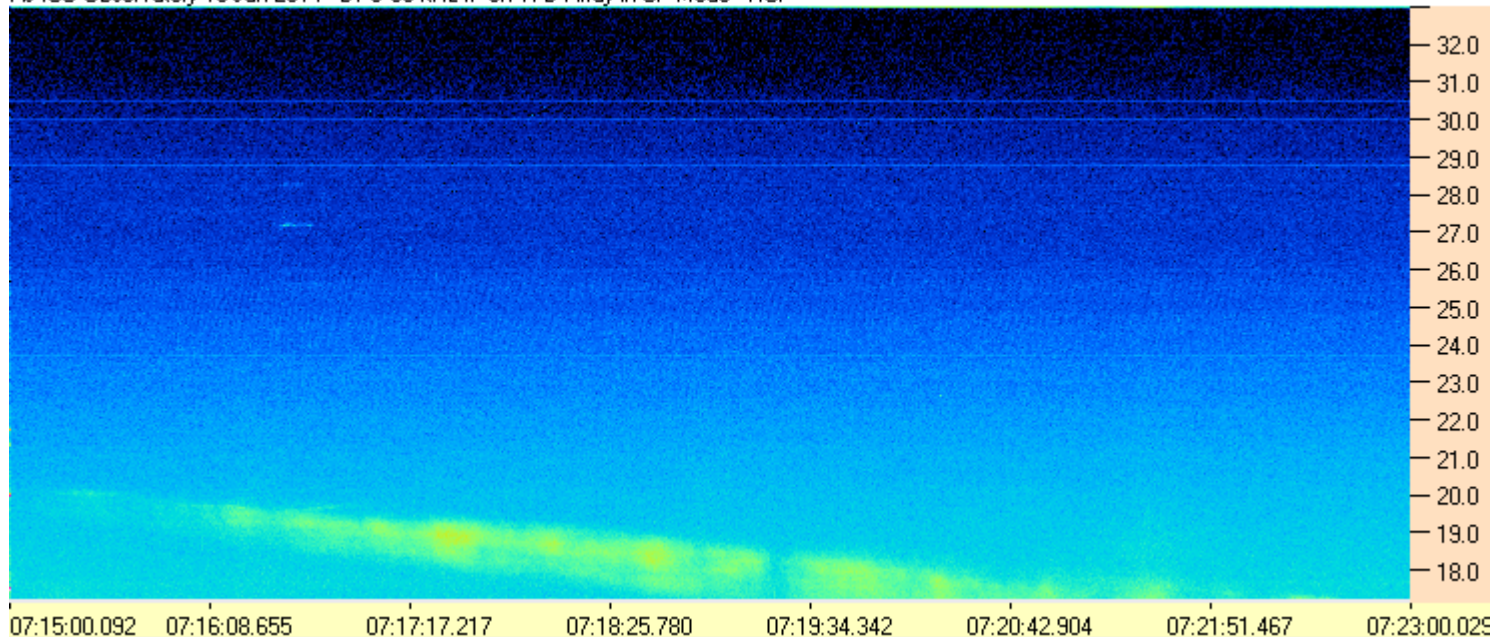
AJ4CO Observatory 15 Jan 2014 - DPS 60 kHz IF on TFD Array in CP Mode - RCP



AJ4CO Observatory 15 Jan 2014 - DPS 60 kHz IF on TFD Array in CP Mode - LCP



AJ4CO Observatory 15 Jan 2014 - DPS 60 kHz IF on TFD Array in CP Mode - RCP



AJ4CO Observatory 15 Jan 2014 - DPS 60 kHz IF on TFD Array in CP Mode - LCP

