

Subject: [radiojove-data] 12 Jan 2014 non-Io-A

From: Dave Typinski <davetyp@typnet.net>

Date: 01/13/2014 20:03

To: RadioJove-Data <radiojove-data@lists.nasa.gov>

Adding to Tom's nice report, here's Sunday morning's non-Io-A.

All RCP L bursting from 17 to 26 MHz. There was also some line noise, just to keep life interesting.

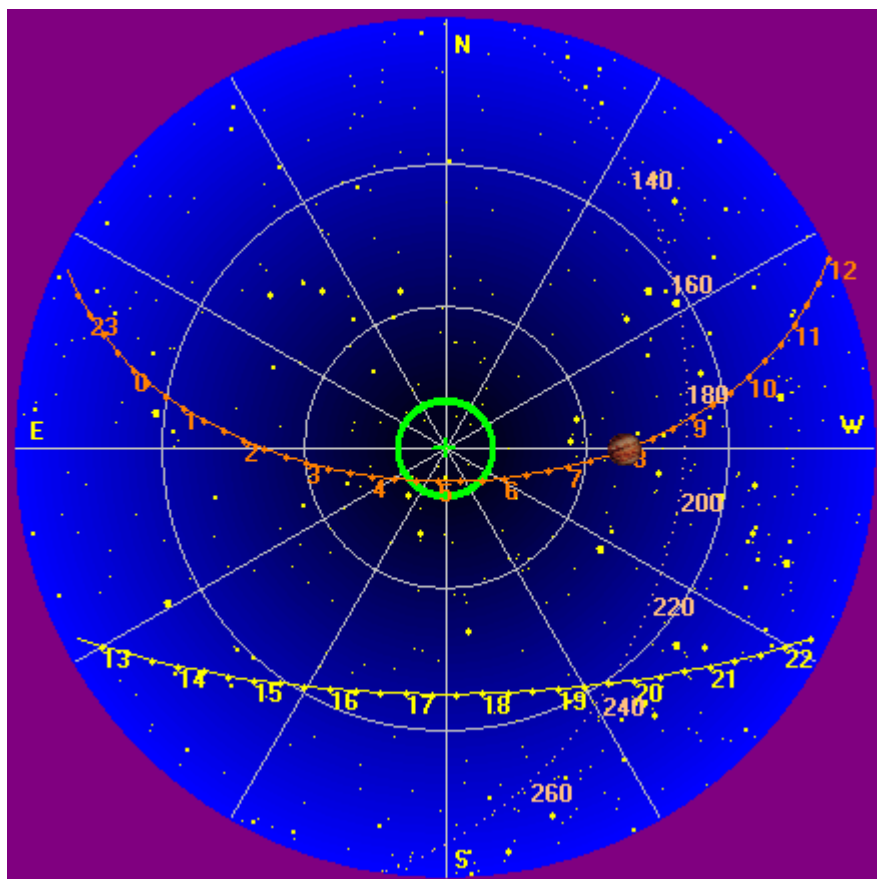
Jupiter was off axis from 34° to 42°.

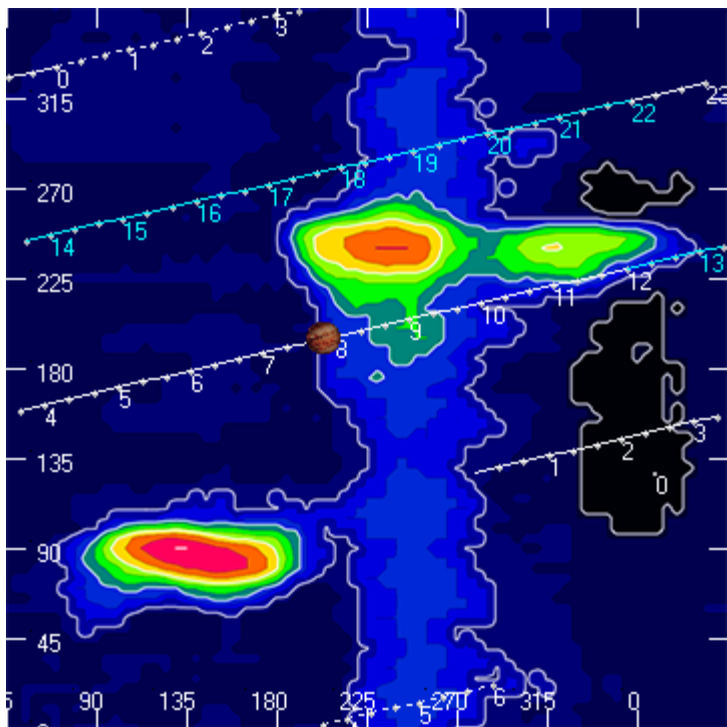
Jupiter was trailing the Sun by 173°.

--

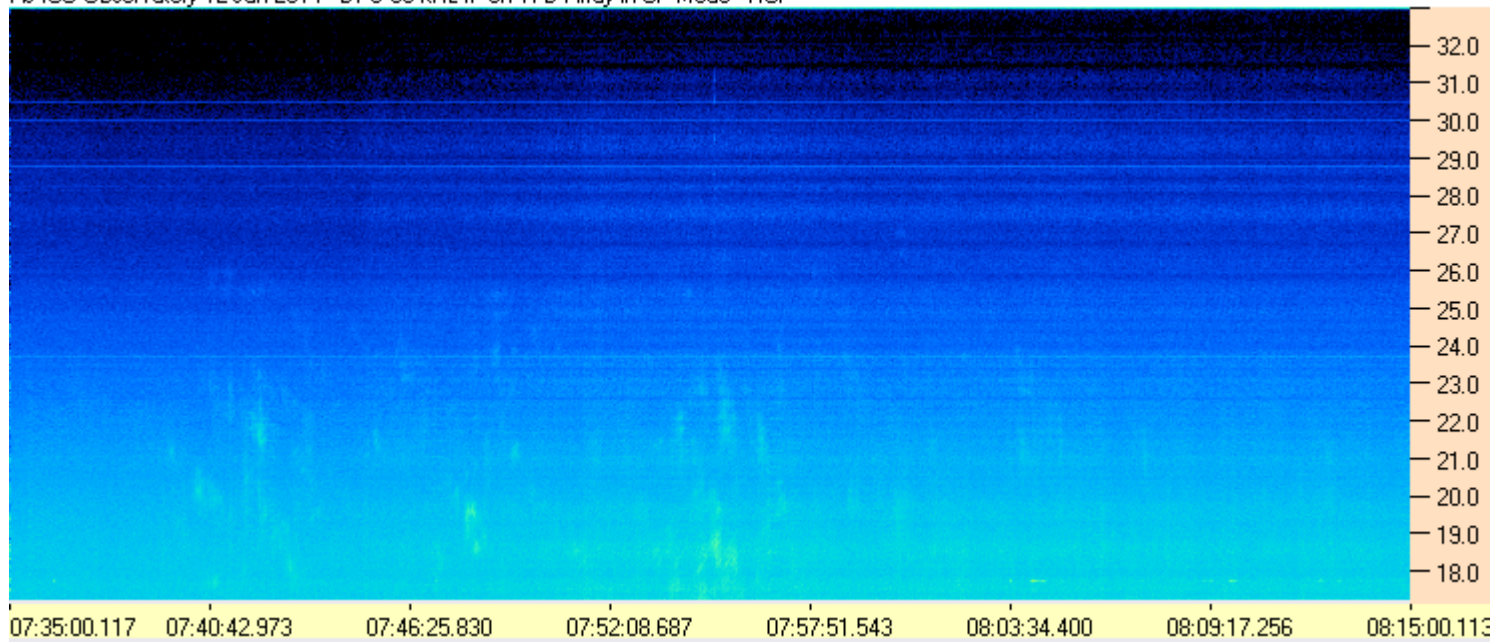
Dave

AJ4CO Observatory, 12 Jan 2014





AJ4CO Observatory 12 Jan 2014 - DPS 60 kHz IF on TFD Array in CP Mode - RCP



AJ4CO Observatory 12 Jan 2014 - DPS 60 kHz IF on TFD Array in CP Mode - LCP

