

Subject: [radiojove-data] 09 Jan 2014 Io-A

From: Dave Typinski <davetyp@typnet.net>

Date: 01/10/2014 22:08

To: RadioJove-Data <radiojove-data@lists.nasa.gov>

Here's some faint non-Io-A from Thursday morning.

All RCP emission, weak L bursting visible from 17 to 22 MHz. Faint modulation lane with negative drift.

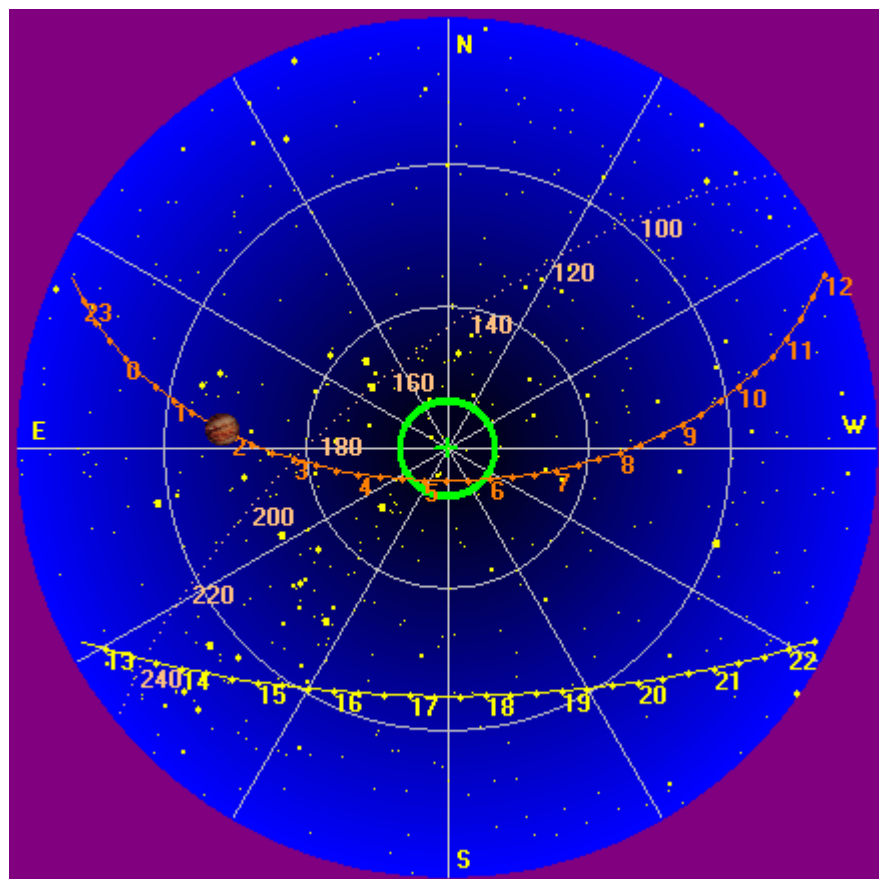
Jupiter was off axis by 46° .

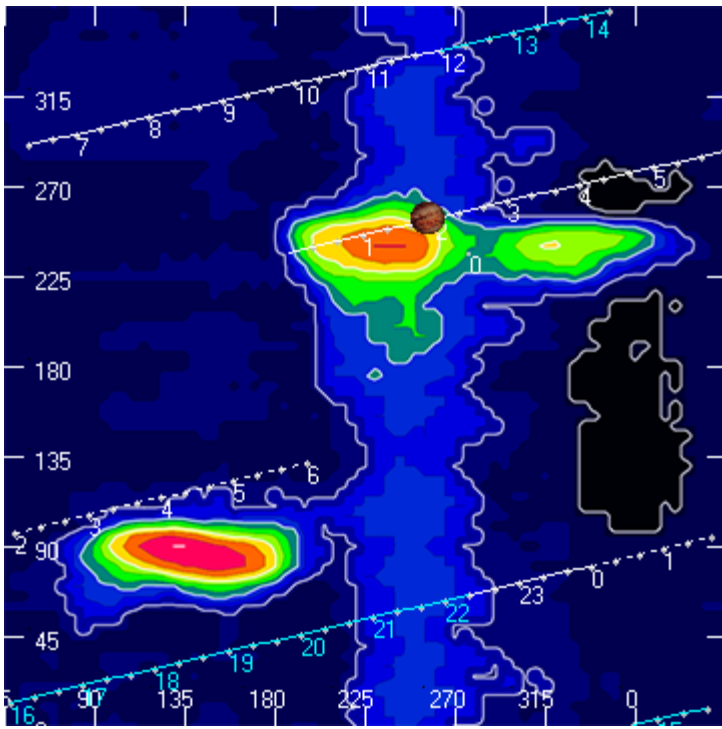
Jupiter was trailing the Sun by 176° .

--

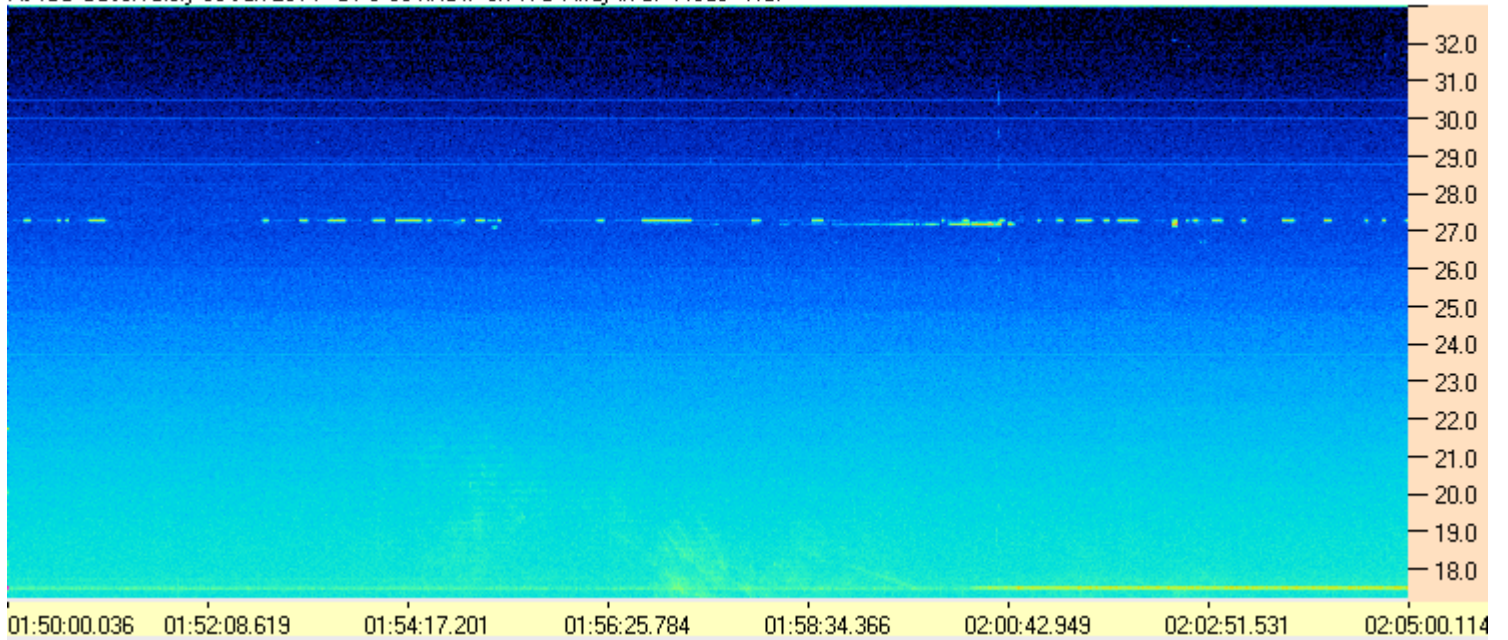
Dave

AJ4CO Observatory, 09 Jan 2014





AJ4CO Observatory 09 Jan 2014 - DPS 60 kHz IF on TFD Array in CP Mode - RCP



AJ4CO Observatory 09 Jan 2014 - DPS 60 kHz IF on TFD Array in CP Mode - LCP

