

Subject: [radiojove-data] 07 Jan 2014 non-Io-B

From: Dave Typinski <davetyp@typnet.net>

Date: 01/08/2014 22:44

To: RadioJove-Data <radiojove-data@lists.nasa.gov>

Here's some non-Io-B from Tuesday morning.

All RCP emission, weak L bursting visible from 17 to 18 MHz. No modulation lanes evident.

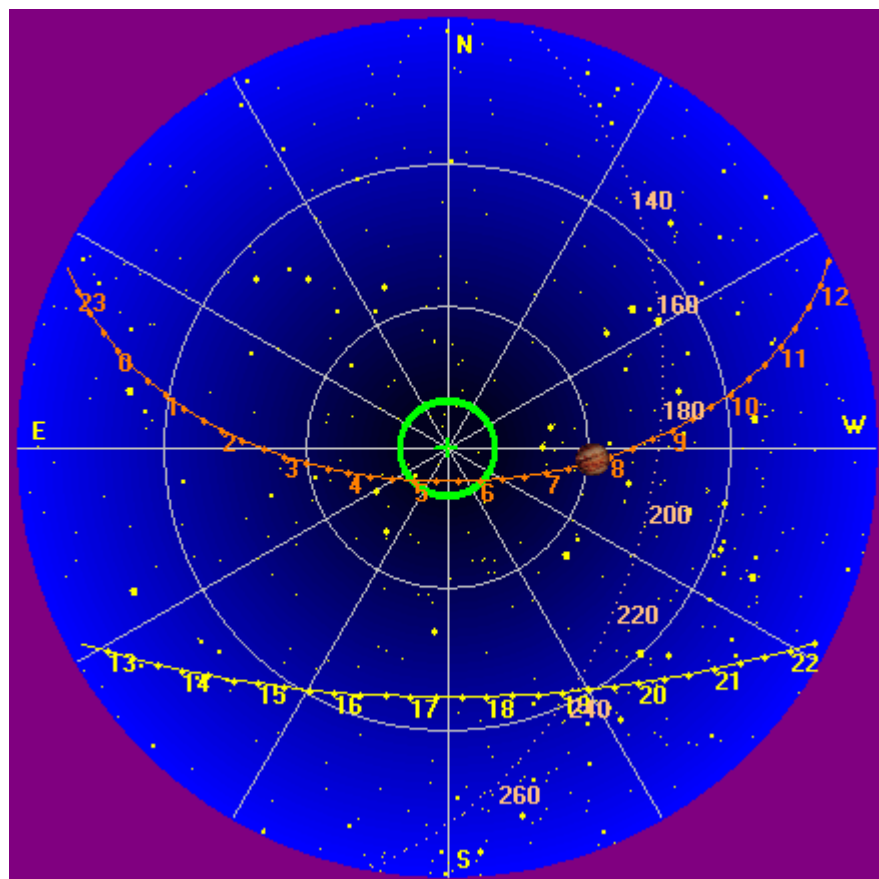
Jupiter was off axis by 30°.

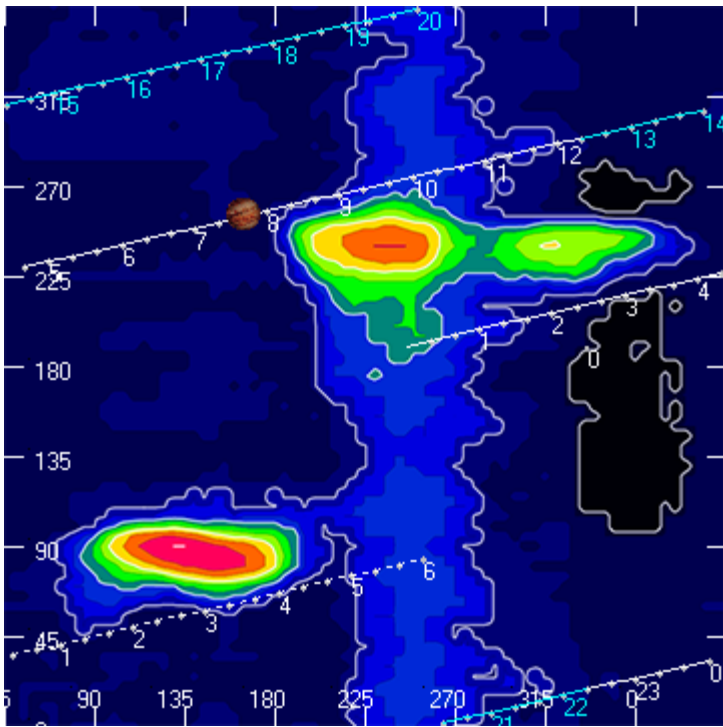
Jupiter was trailing the Sun by 178°.

--

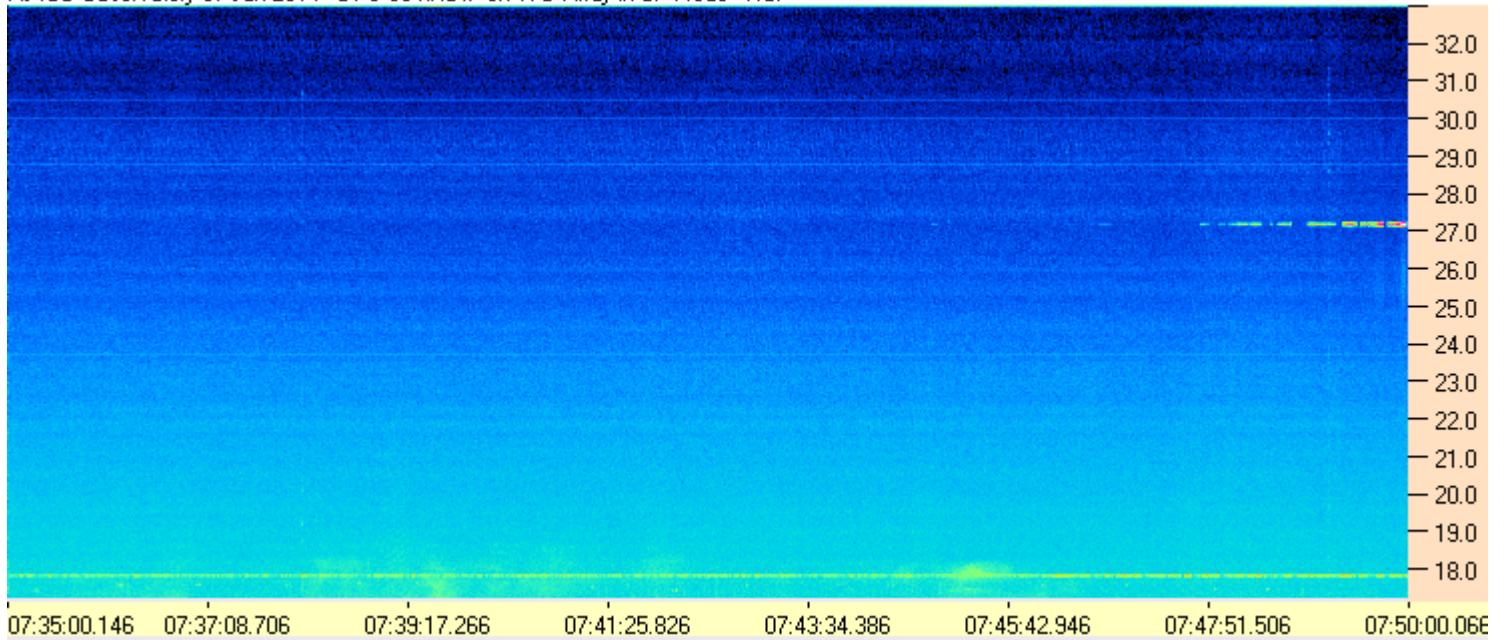
Dave

AJ4CO Observatory, 07 Jan 2014





AJ4CO Observatory 07 Jan 2014 - DPS 60 kHz IF on TFD Array in CP Mode - RCP



AJ4CO Observatory 07 Jan 2014 - DPS 60 kHz IF on TFD Array in CP Mode - LCP

