

Subject: [radiojove-data] 06 Jan 2014 non-Io-A

From: Dave Typinski <davetyp@typnet.net>

Date: 01/06/2014 20:28

To: RadioJove-Data <radiojove-data@lists.nasa.gov>

Here's some non-Io-A from Monday morning.

All RCP emission, weak L bursting visible from 17 to 21 MHz. No modulation lanes evident.

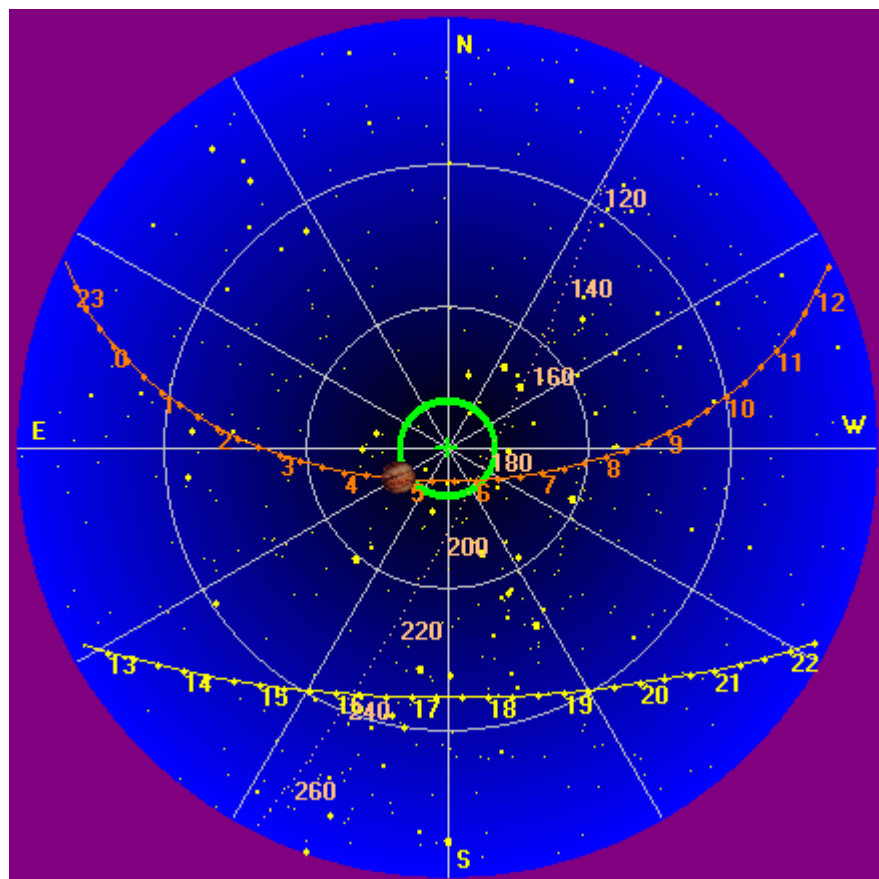
Jupiter was off axis by 14° to 10° .

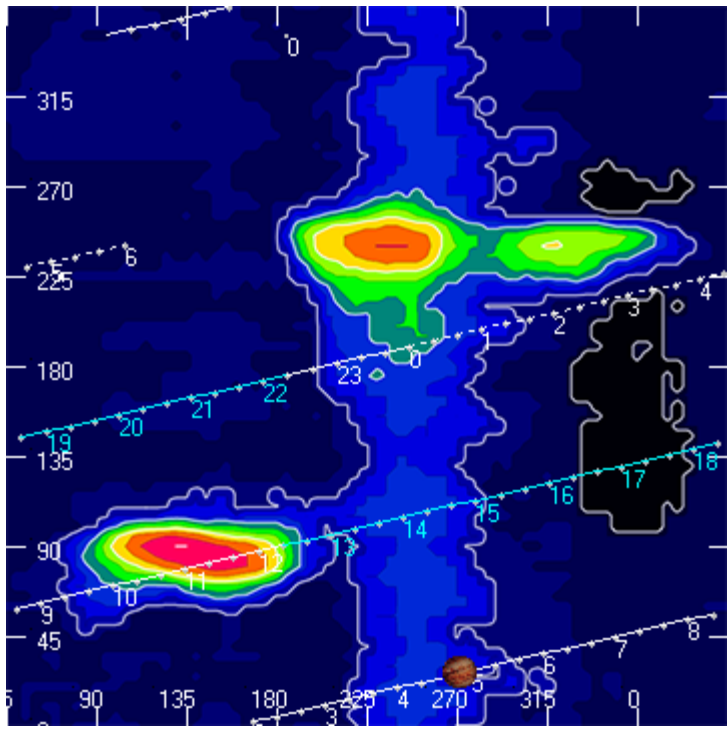
Jupiter was 180° from the Sun -- opposition.

--

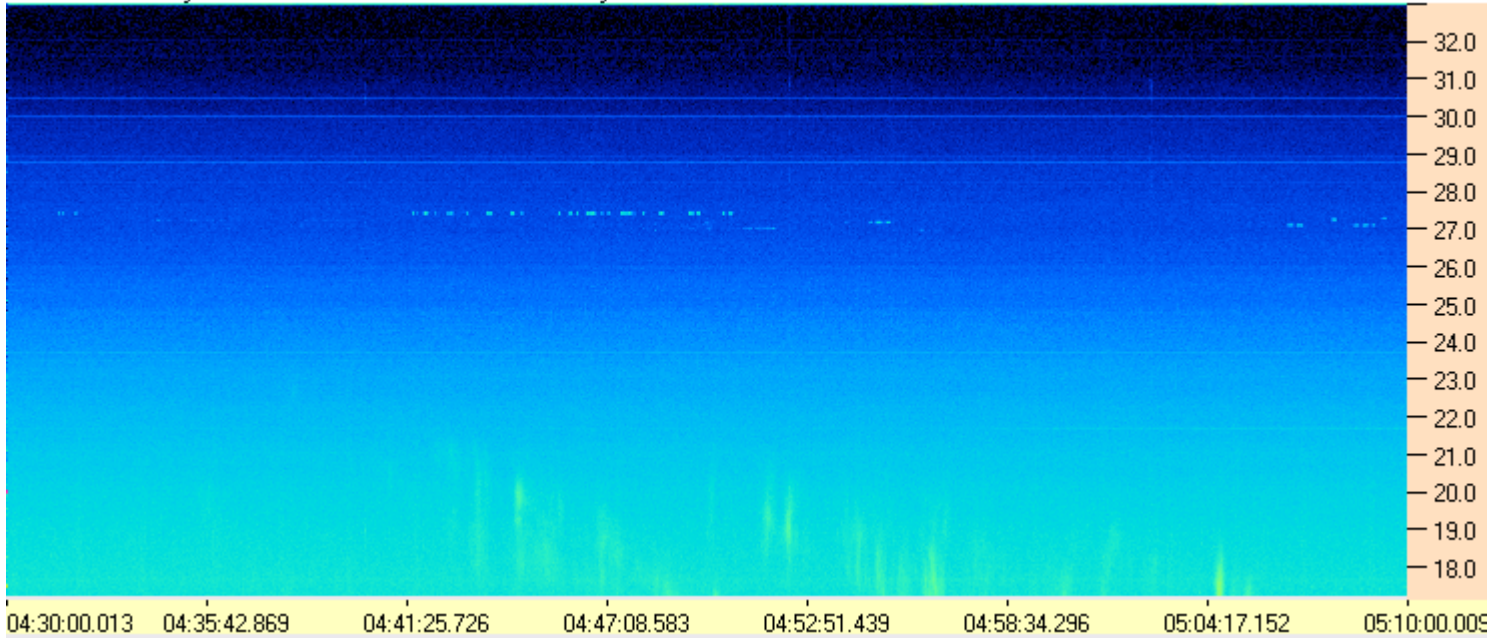
Dave

AJ4CO Observatory, 06 Jan 2014

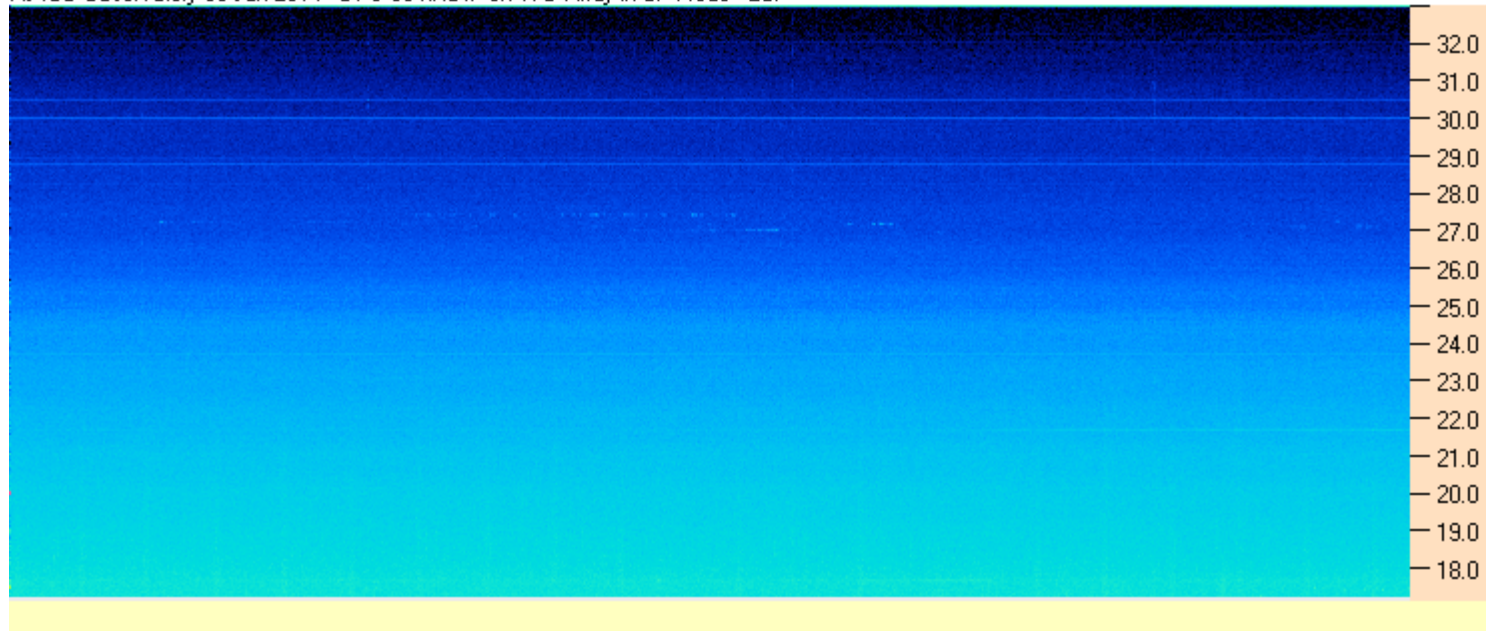




AJ4CO Observatory 06 Jan 2014 - DPS 60 kHz IF on TFD Array in CP Mode - RCP



AJ4CO Observatory 06 Jan 2014 - DPS 60 kHz IF on TFD Array in CP Mode - LCP



AJ4CO Observatory 06 Jan 2014 - FS-200 30 kHz IF on TFD Array in CP Mode - RCP+LCP Summed

