

**Subject:** [radiojove-data] 06 Jan 2014 Io-B

**From:** Dave Typinski <davetyp@typnet.net>

**Date:** 01/06/2014 20:30

**To:** RadioJove-Data <radiojove-data@lists.nasa.gov>

Adding to Tom's nice report, here's the Io-B from Monday morning.

Very brief, very weak N event visible between 23 and 25 MHz.

Jupiter was off axis by  $59^\circ$  to  $61^\circ$ . Hence the reverse polarization.

Jupiter was trailing the Sun by  $179^\circ$ .

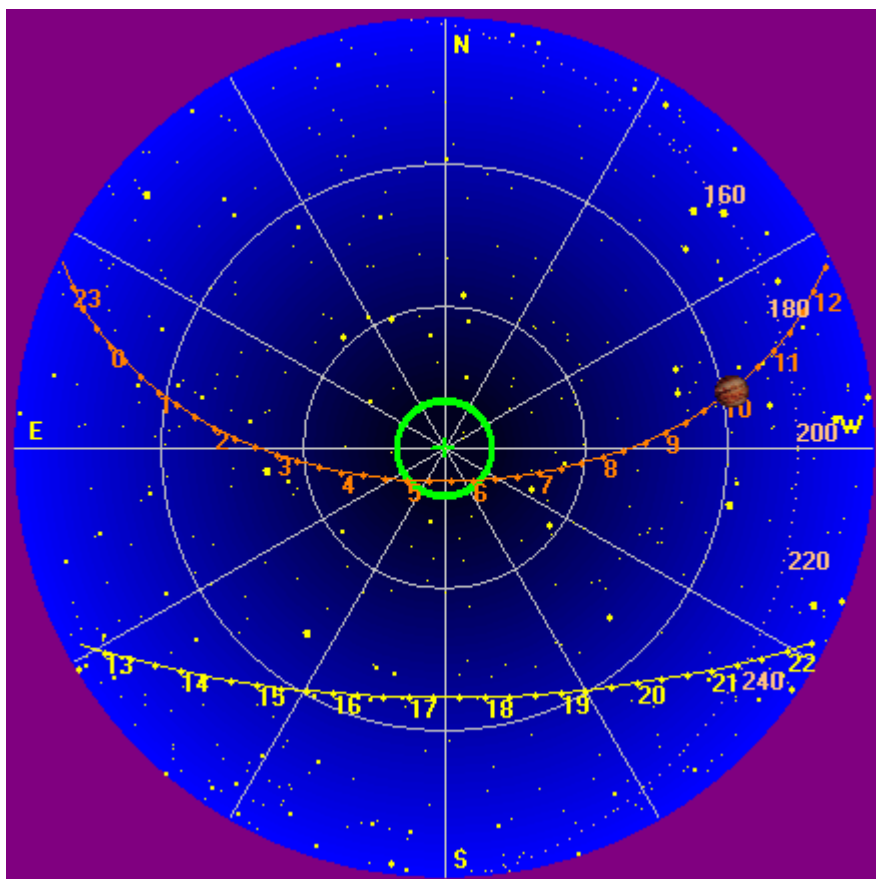
--

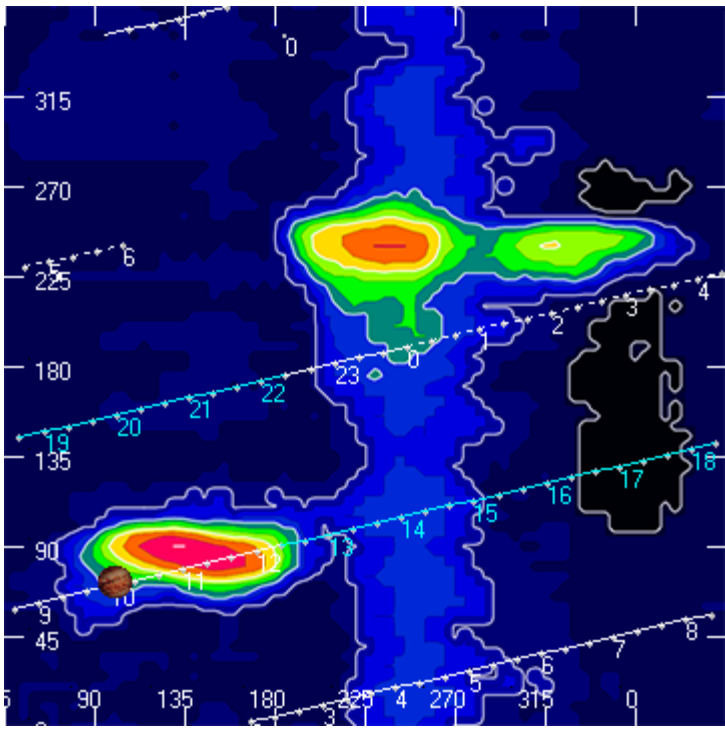
Dave

---

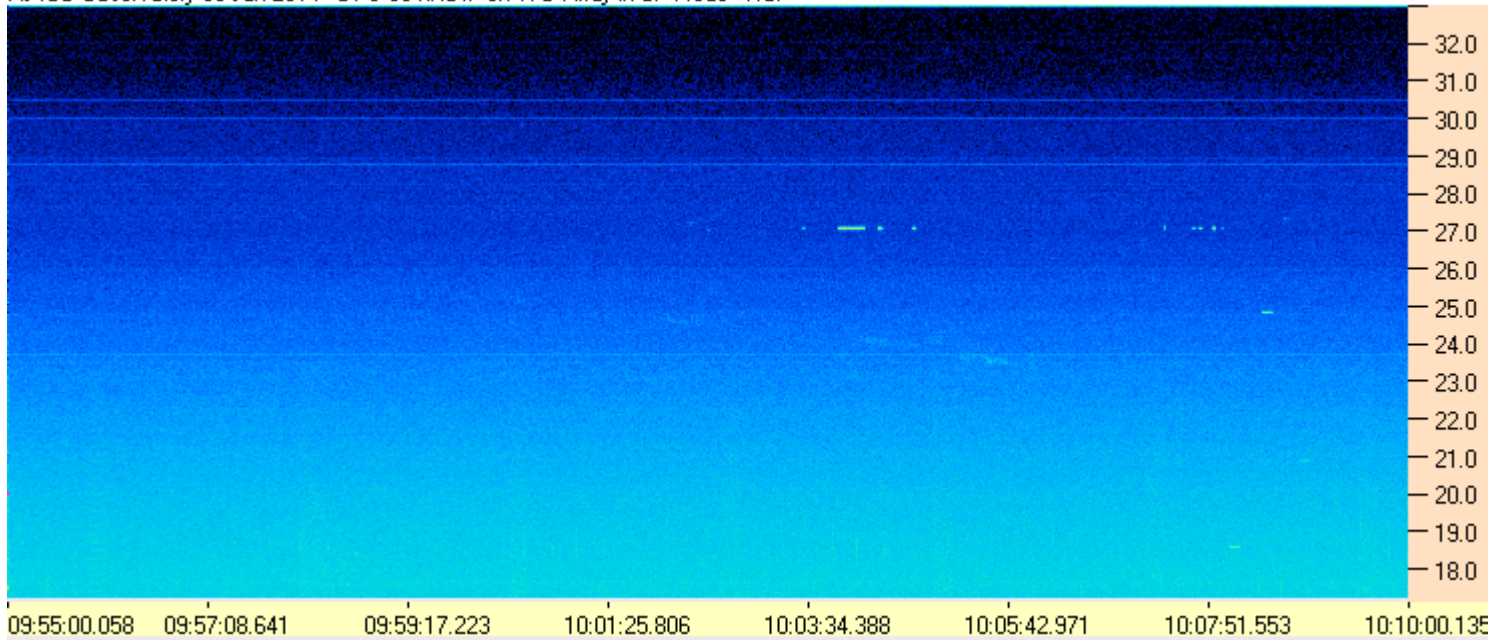
**AJ4CO Observatory, 06 Jan 2014**

---

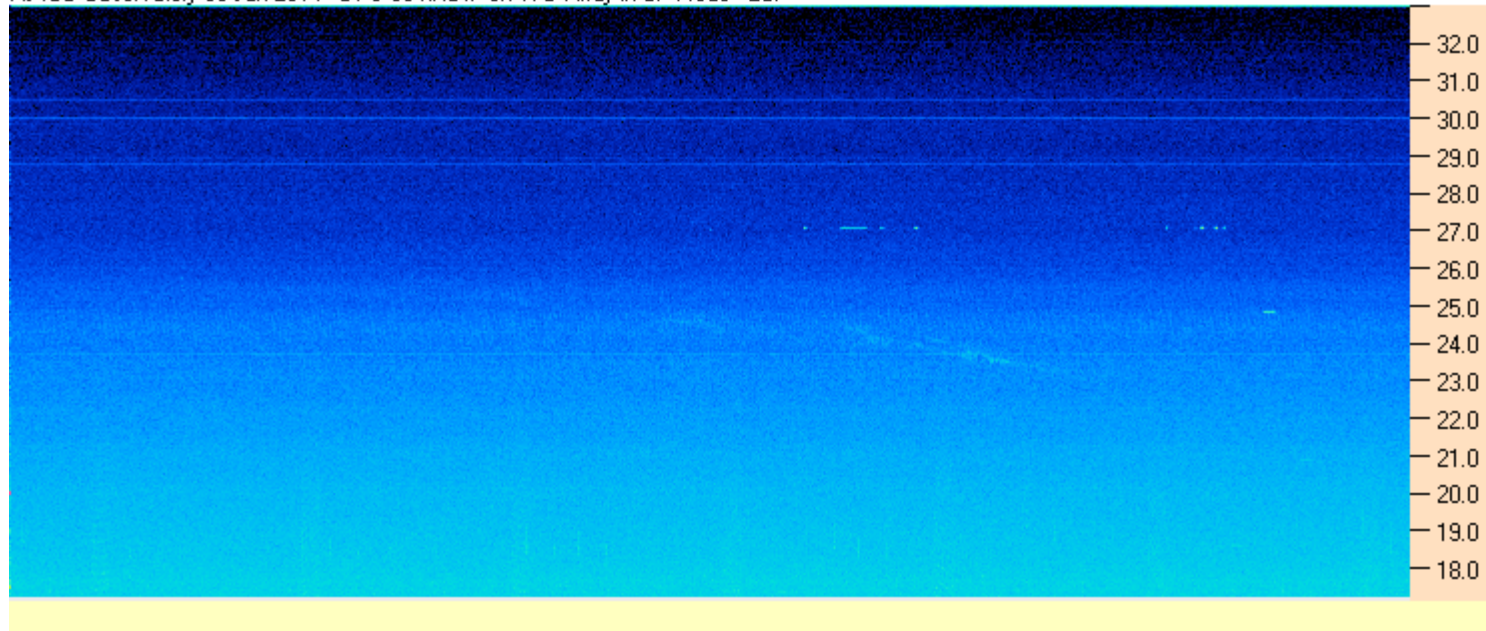




AJ4CO Observatory 06 Jan 2014 - DPS 60 kHz IF on TFD Array in CP Mode - RCP



AJ4CO Observatory 06 Jan 2014 - DPS 60 kHz IF on TFD Array in CP Mode - LCP



AJ4CO Observatory 06 Jan 2014 - FS-200 30 kHz IF on TFD Array in CP Mode - RCP+LCP Summed

