

Subject: [radiojove-data] 30 Dec 2013 non-Io-A

From: Dave Typinski <davetyp@typnet.net>

Date: 12/31/2013 00:10

To: RadioJove-Data <radiojove-data@lists.nasa.gov>

Preceding this morning's Io-B was some weak non-Io-A.

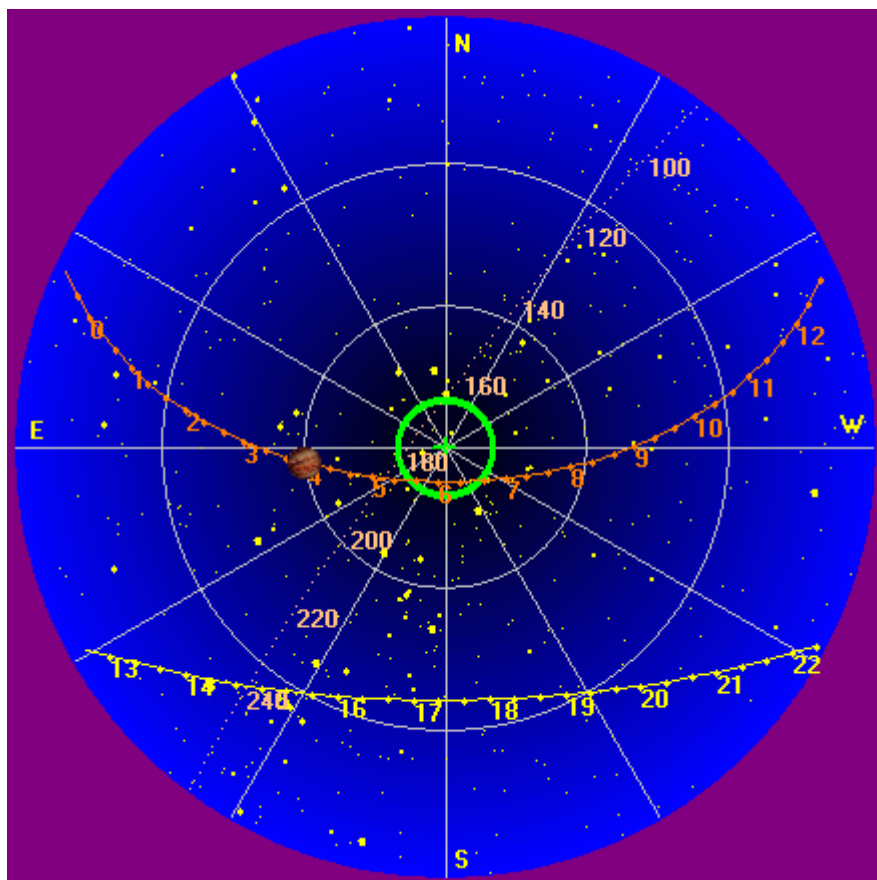
Jupiter was off axis by 30°.

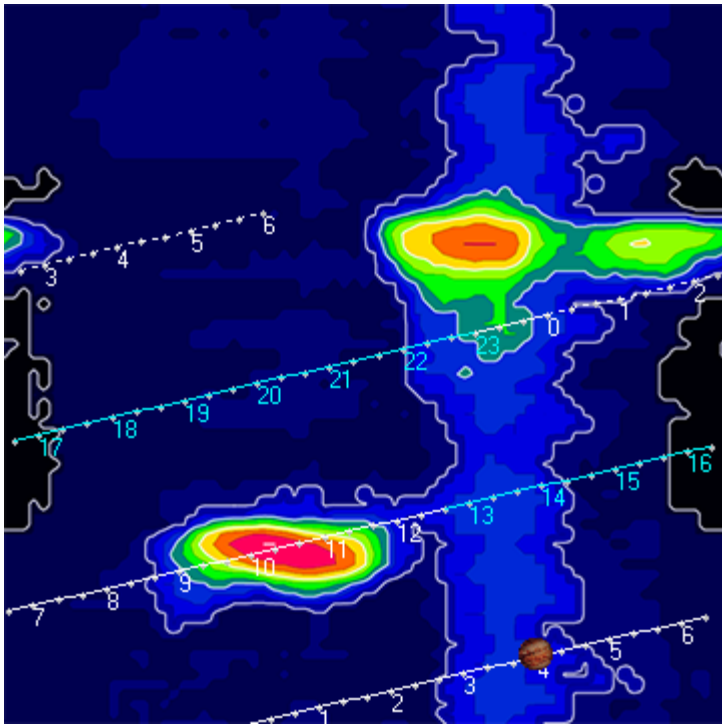
Jupiter was leading the Sun by 172°.

--

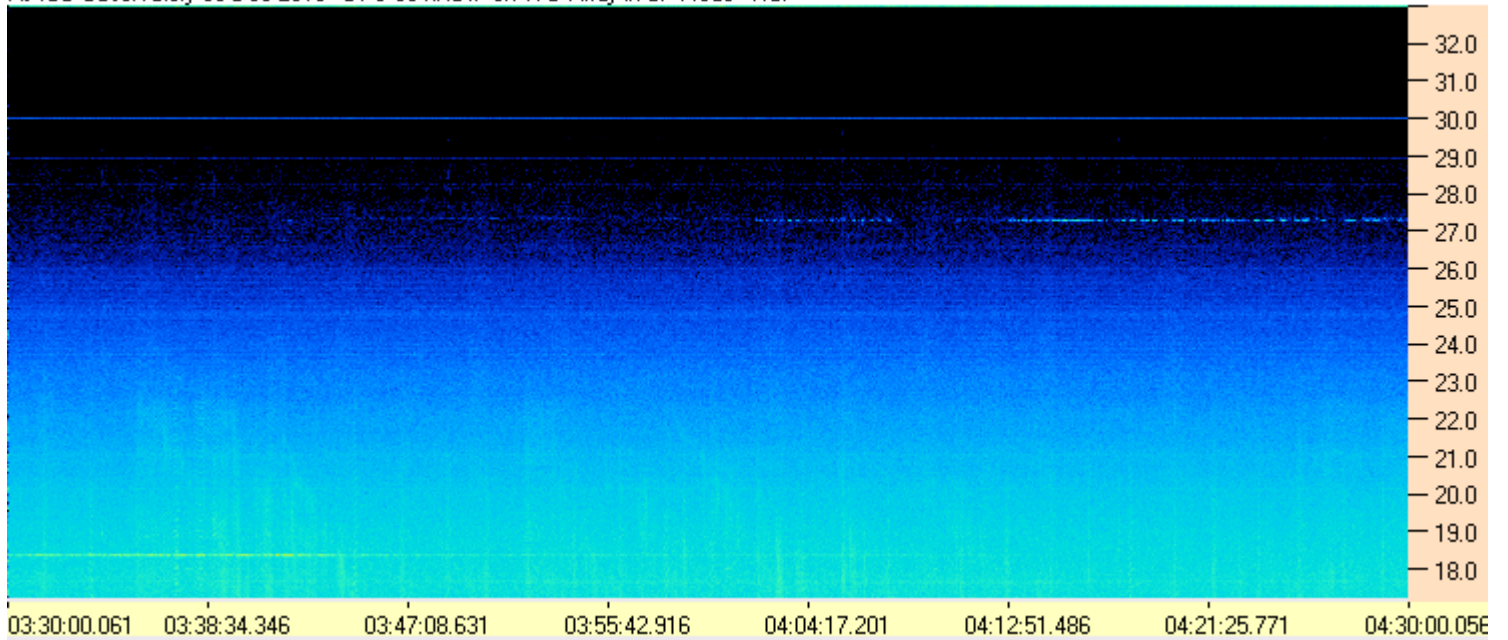
Dave

AJ4CO Observatory, 30 Dec 2013

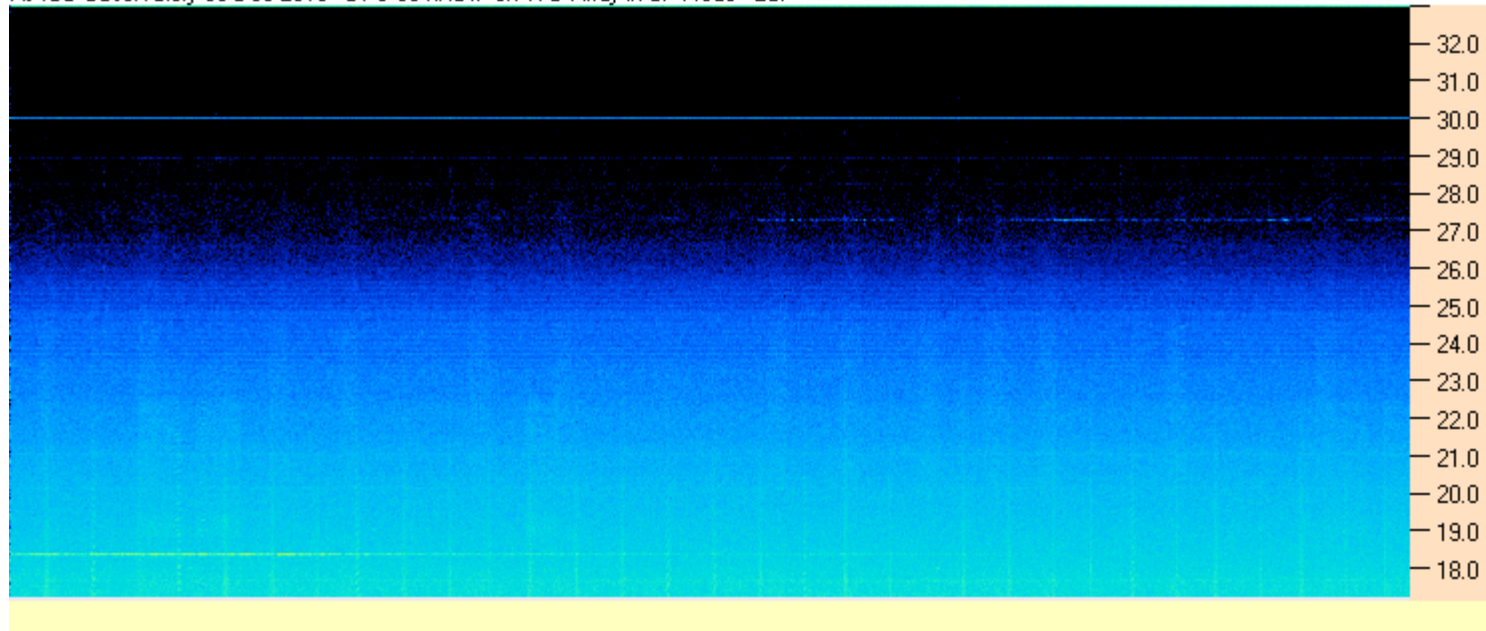




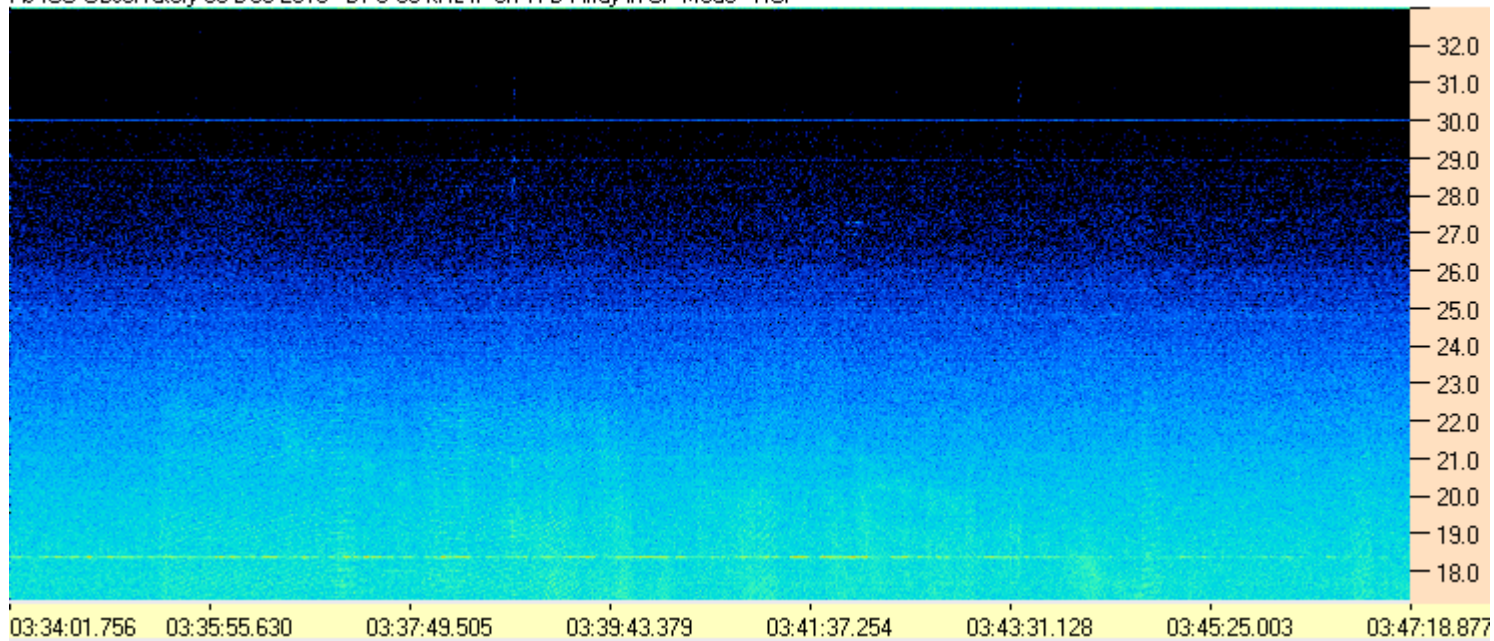
AJ4CO Observatory 30 Dec 2013 - DPS 30 kHz IF on TFD Array in CP Mode - RCP



AJ4CO Observatory 30 Dec 2013 - DPS 30 kHz IF on TFD Array in CP Mode - LCP



AJ4CO Observatory 30 Dec 2013 - DPS 30 kHz IF on TFD Array in CP Mode - RCP



AJ4CO Observatory 30 Dec 2013 - DPS 30 kHz IF on TFD Array in CP Mode - LCP

