

**Subject:** [radiojove-data] 26 Dec 2013 non-Io-A

**From:** Dave Typinski <davetyp@typnet.net>

**Date:** 12/26/2013 22:36

**To:** RadioJove-Data <radiojove-data@lists.nasa.gov>

Adding to Tom's nice report, here's this morning's non-Io-A.

Barely visible L bursts visible from 20 to 26 MHz. Probably RCP since the TFD seems to go CP backwards when the source is so far off axis..

Jupiter was off axis by about  $50^\circ$ . I'm surprised the DPS saw this stuff at all. Nothing at all in the UFRO spectro or the Jove receivers.

Jupiter was leading the Sun by  $168^\circ$ .

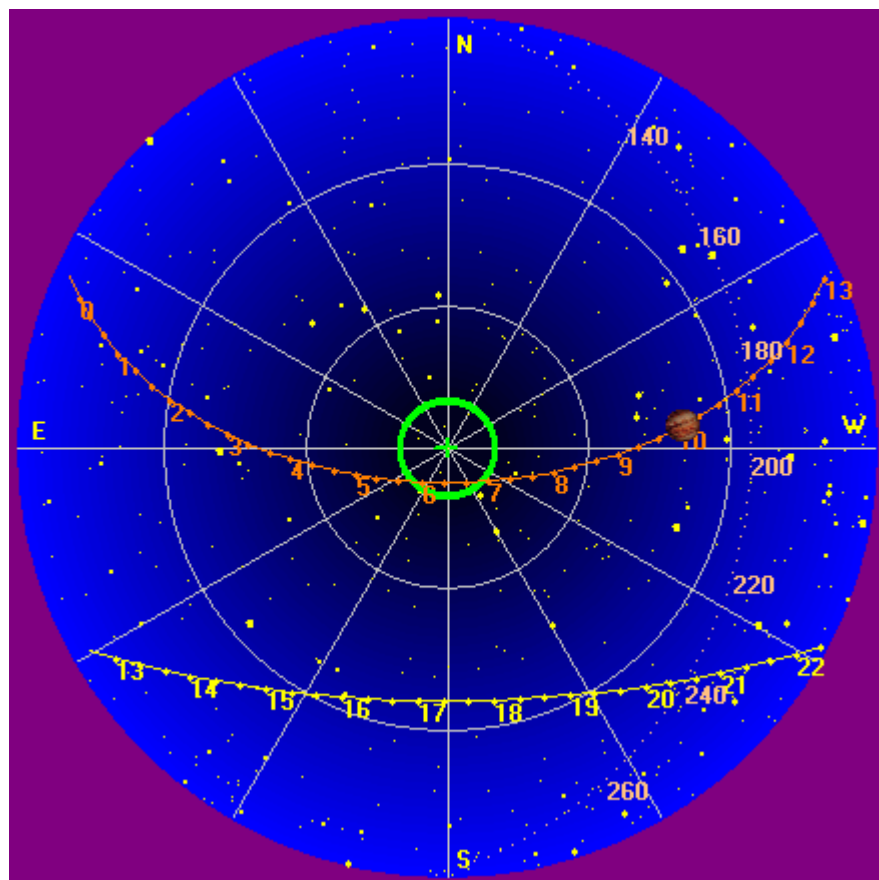
--

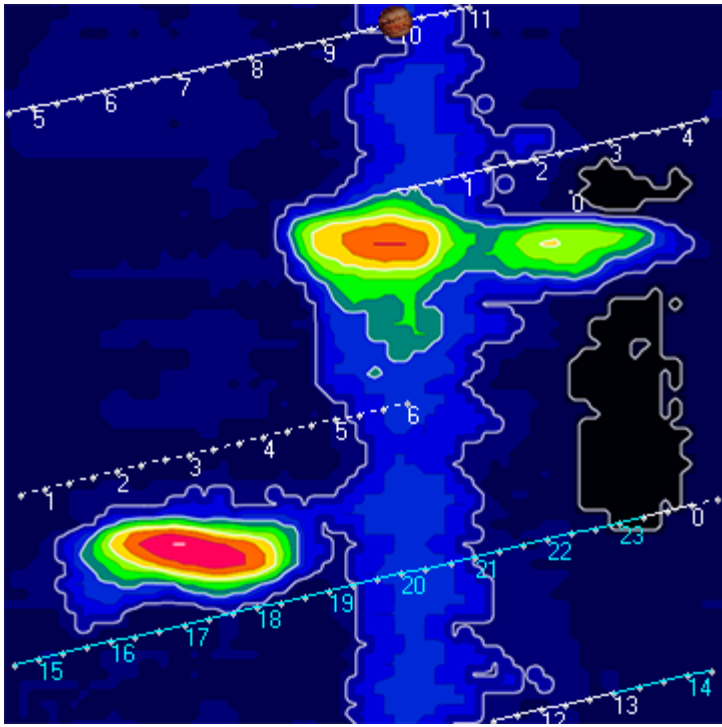
Dave

---

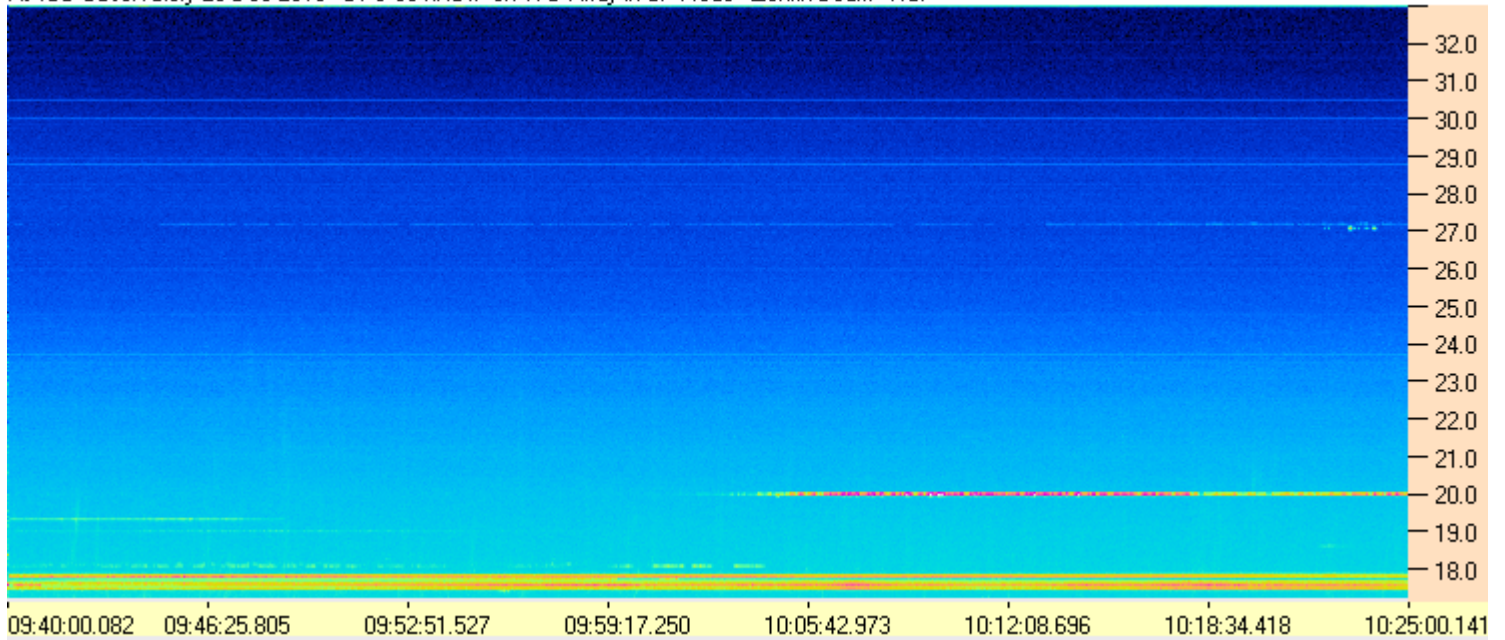
**AJ4CO Observatory, 26 Dec 2013**

---





AJ4CO Observatory 26 Dec 2013 - DPS 60 kHz IF on TFD Array in CP Mode - Zenith Beam - RCP



AJ4CO Observatory 26 Dec 2013 - DPS 60 kHz IF on TFD Array in CP Mode - Zenith Beam - LCP

