

Subject: [radiojove-data] 24 Dec 2013 non-Io-A

From: Dave Typinski <davetyp@typnet.net>

Date: 12/25/2013 00:24

To: RadioJove-Data <radiojove-data@lists.nasa.gov>

Here's some surprise Christmas Eve non-Io-A.

Weak RCP L bursts visible from 17 to 23 MHz, from 0810 to 1020 UTC. Modulation lanes visible around 0845.

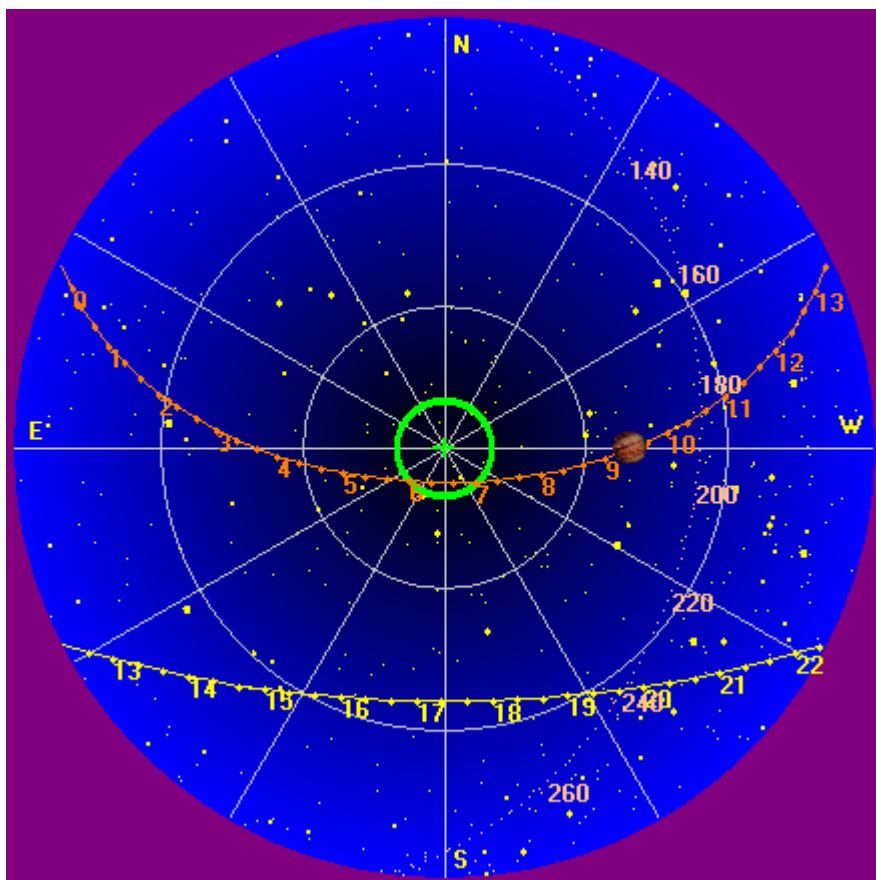
The fact that Jupiter was off axis from 23° to 51° didn't help. Not much visible in the UFRO spectro or the Jove receivers.

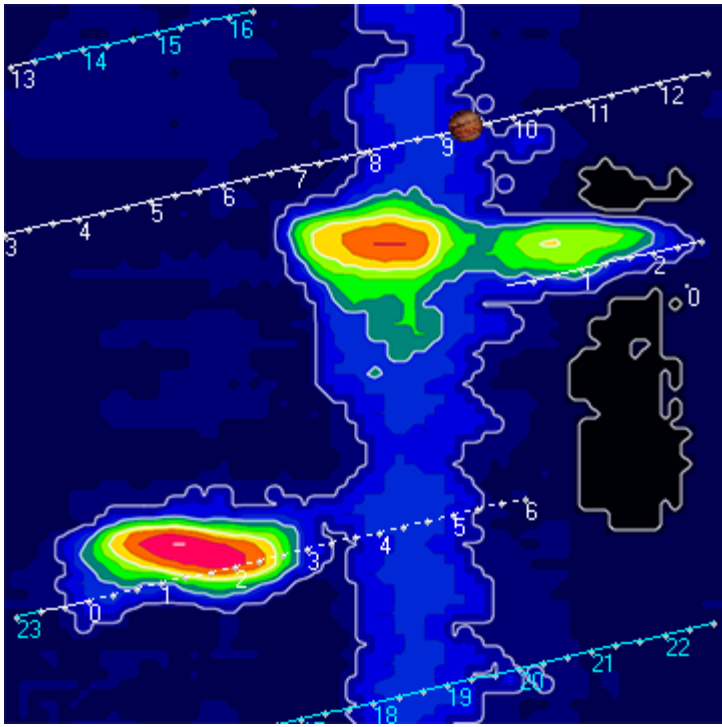
Jupiter was leading the Sun by 166° .

--

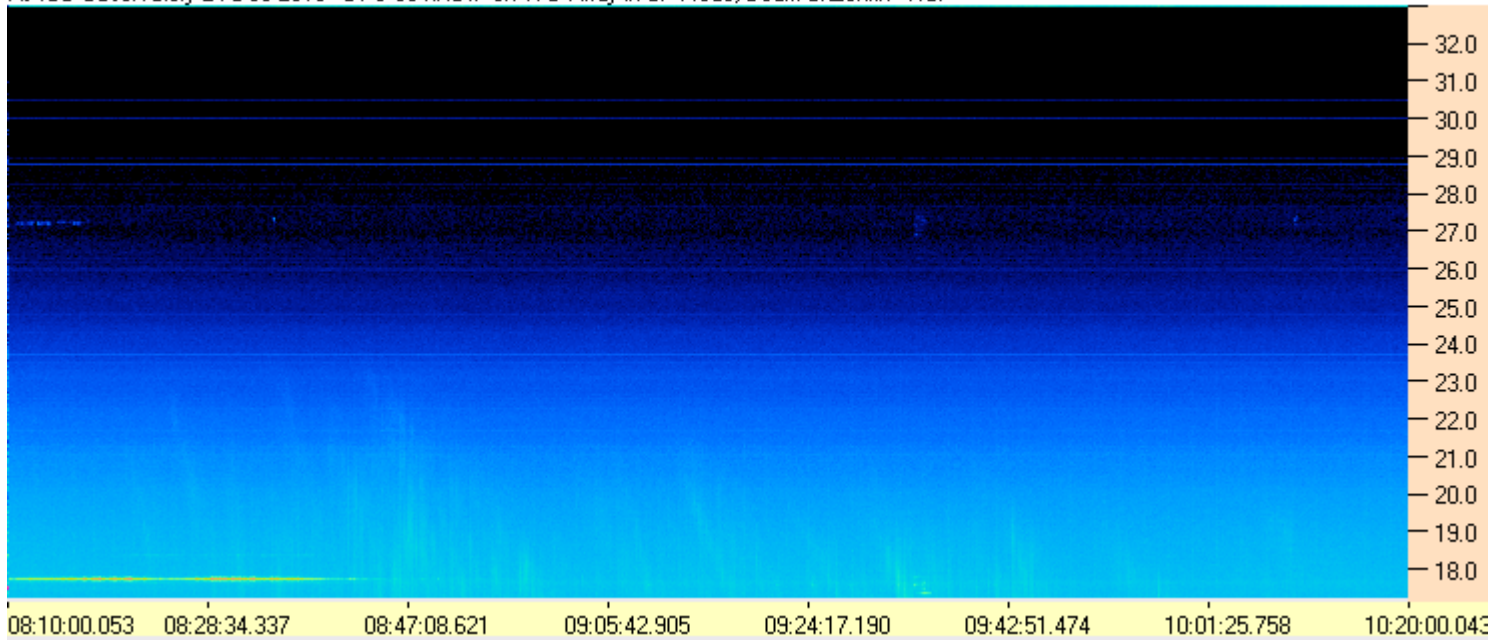
Dave

AJ4CO Observatory, 24 Dec 2013

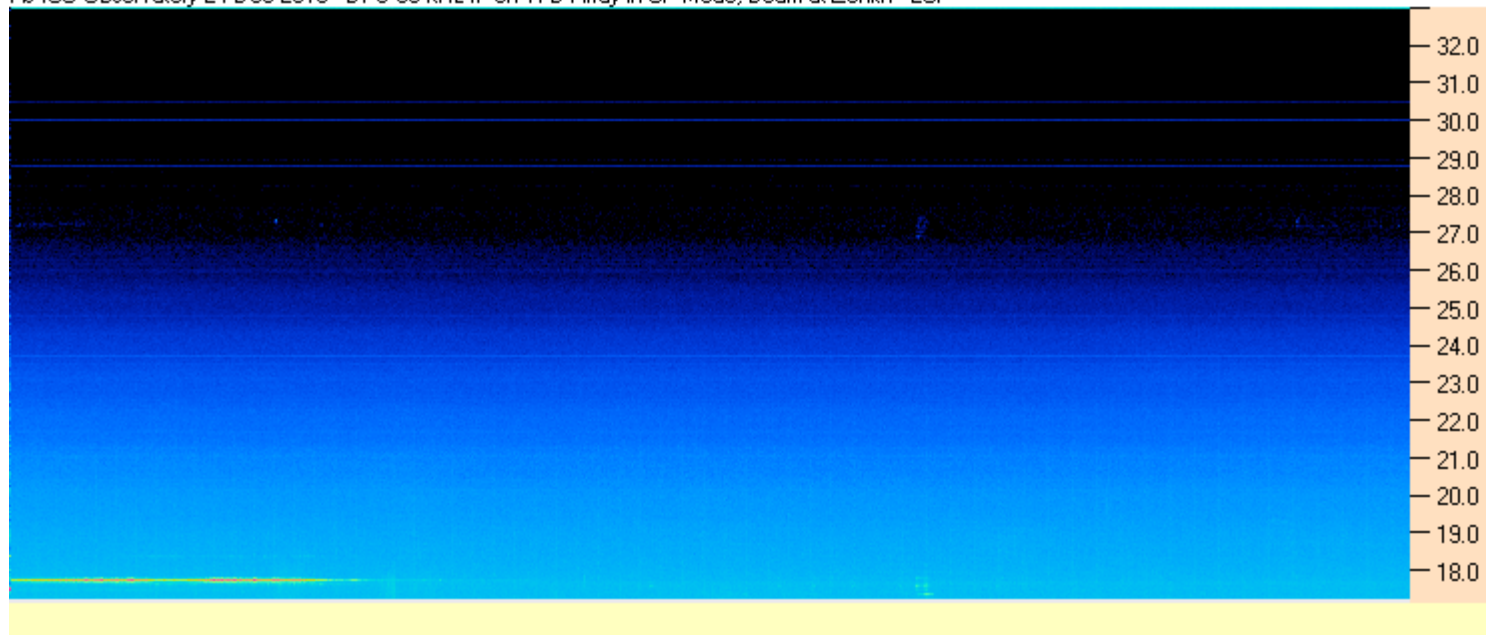




AJ4CO Observatory 24 Dec 2013 - DPS 60 kHz IF on TFD Array in CP Mode, Beam at Zenith - RCP



AJ4CO Observatory 24 Dec 2013 - DPS 60 kHz IF on TFD Array in CP Mode, Beam at Zenith - LCP



AJ4CO Observatory 24 Dec 2013 - DPS 60 kHz IF on TFD Array in CP Mode, Beam at Zenith - RCP

