

Subject: [radiojove-data] 21 Dec 2013 non-Io-B

From: Dave Typinski <davetyp@typnet.net>

Date: 12/24/2013 01:02

To: RadioJove-Data <radiojove-data@lists.nasa.gov>

Here was some surprise non-Io-B from Friday night / Saturday morning. RCP L bursting from 18 to 20 MHz.

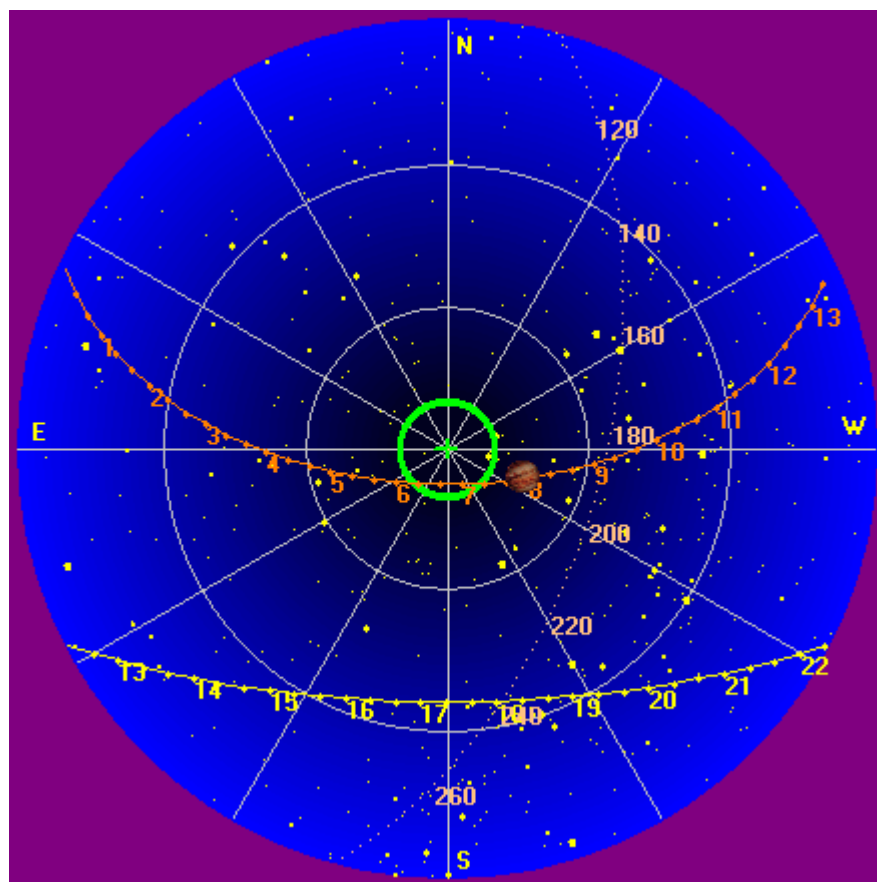
Jupiter was off axis 17° .

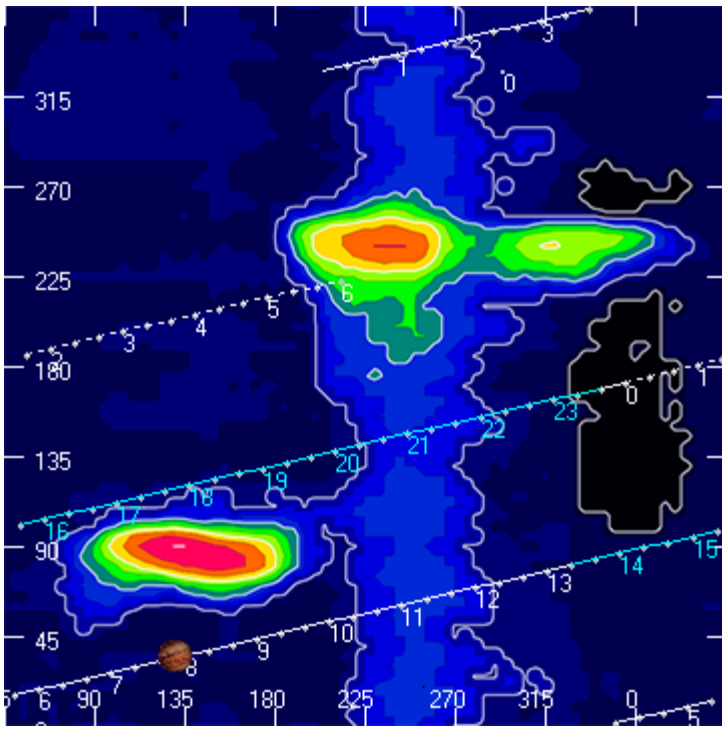
Jupiter was leading the Sun by 162° .

--

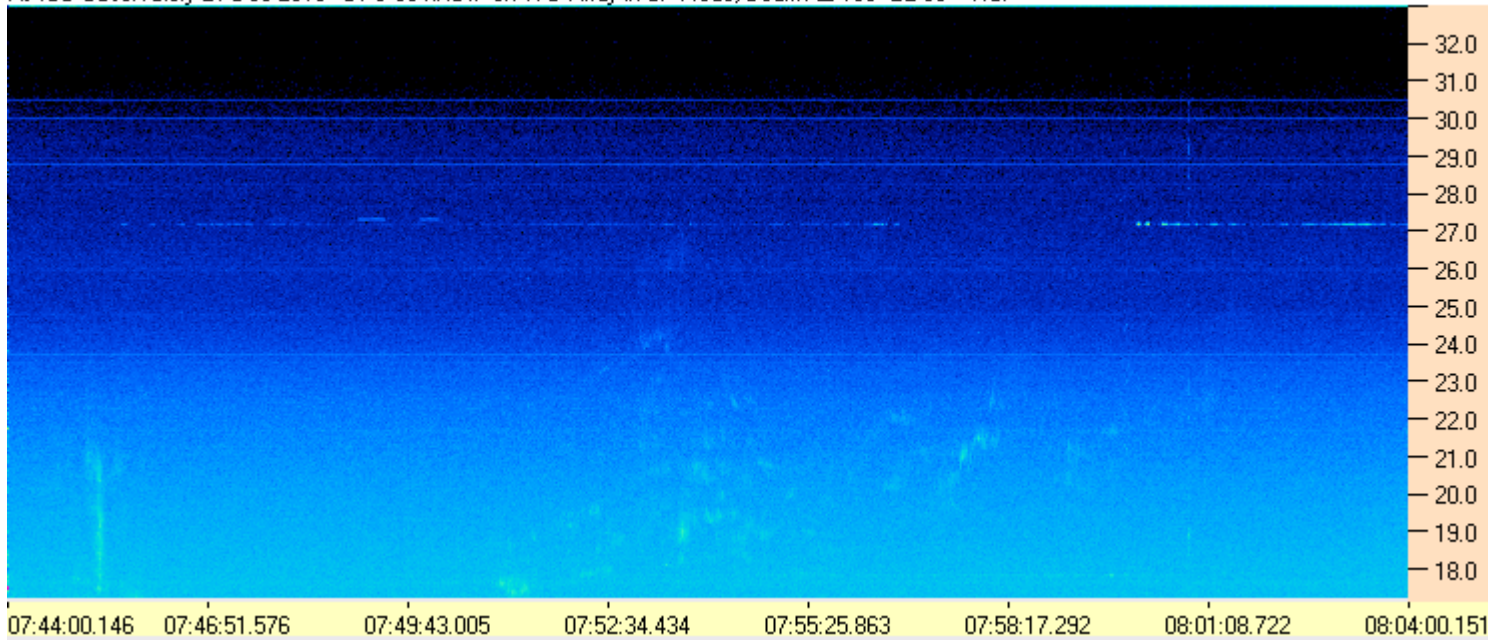
Dave

AJ4CO Observatory, 21 Dec 2013

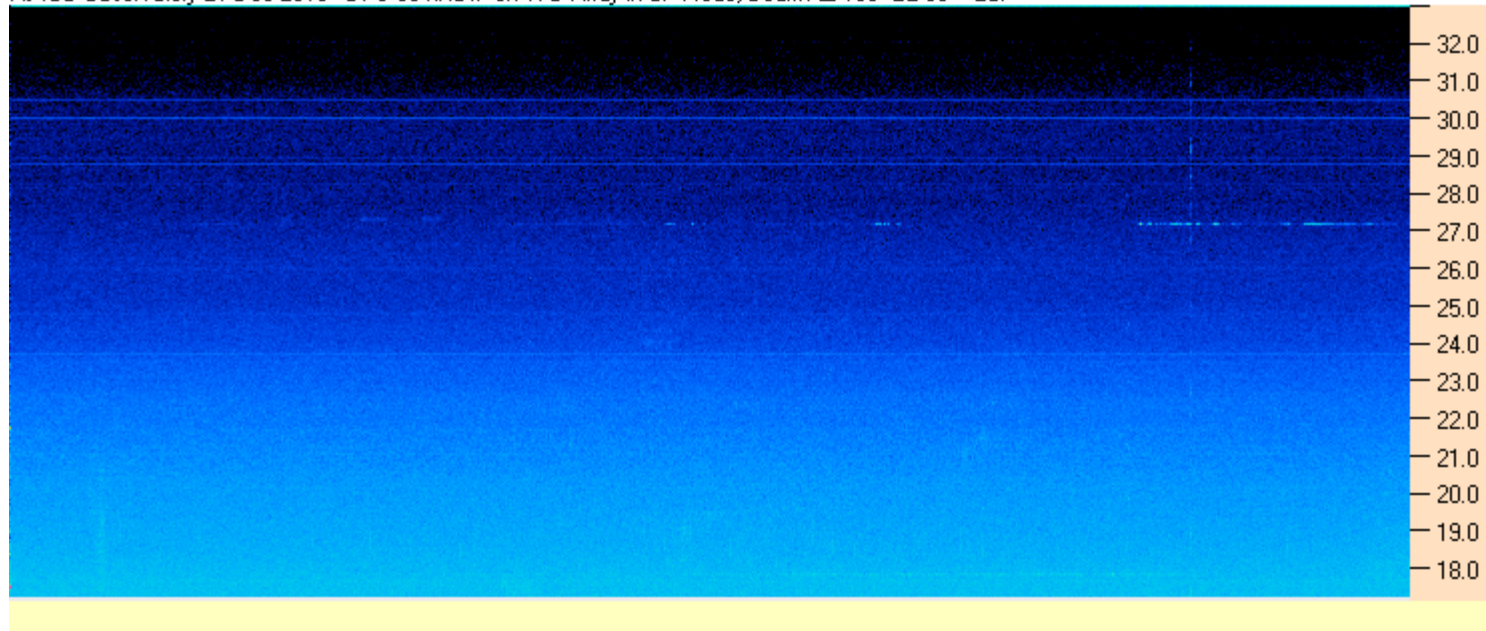




AJ4CO Observatory 21 Dec 2013 - DPS 60 kHz IF on TFD Array in CP Mode, Beam AZ 180° EL 90° - RCP



AJ4CO Observatory 21 Dec 2013 - DPS 60 kHz IF on TFD Array in CP Mode, Beam AZ 180° EL 90° - LCP



AJ4CO Observatory 21 Dec 2013 - FS-200 30 kHz IF on TFD Array in CP Mode, Beam AZ 180° EL 90° - RCP+LCP Summed

