

Subject: [radiojove-data] 17 Dec 2013 non-Io-C

From: Dave Typinski <davetyp@typnet.net>

Date: 12/18/2013 20:23

To: RadioJove-Data <radiojove-data@lists.nasa.gov>

Adding to the pile, here's very brief, weak spurt of non-Io-C between 17 and 18 MHz.

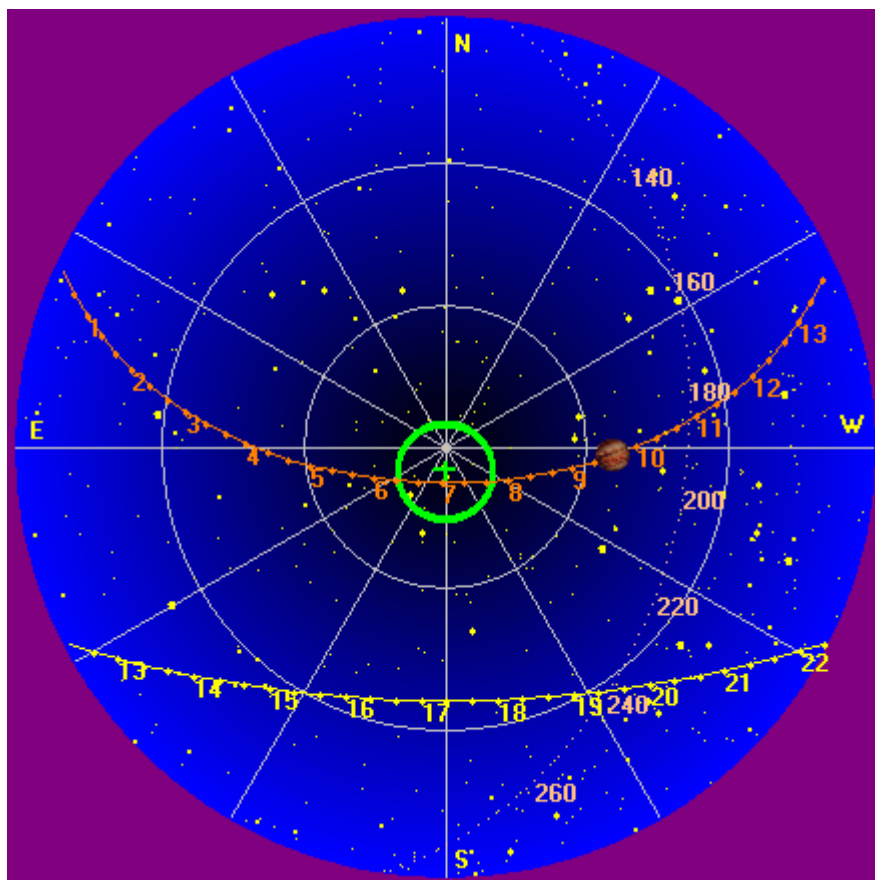
Jupiter was off axis by 35°.

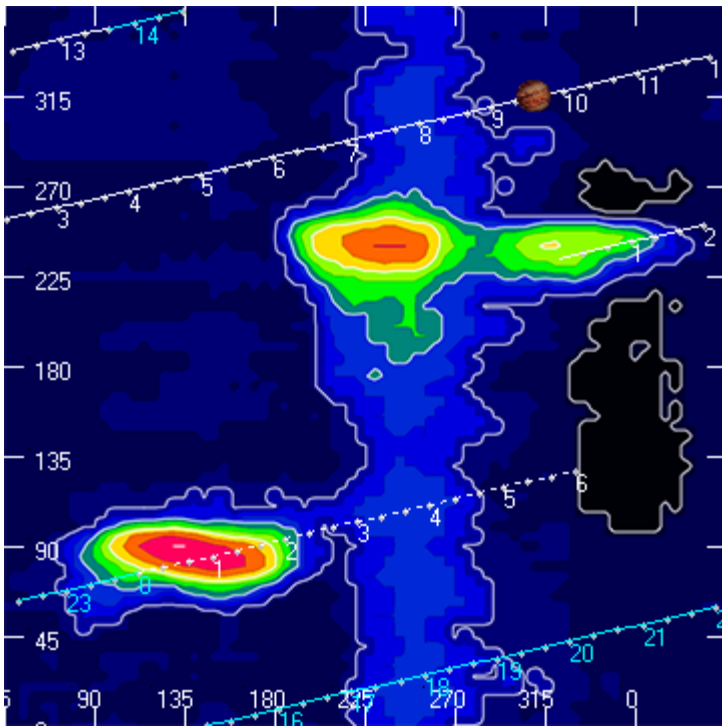
Jupiter was leading the Sun by 158°.

--

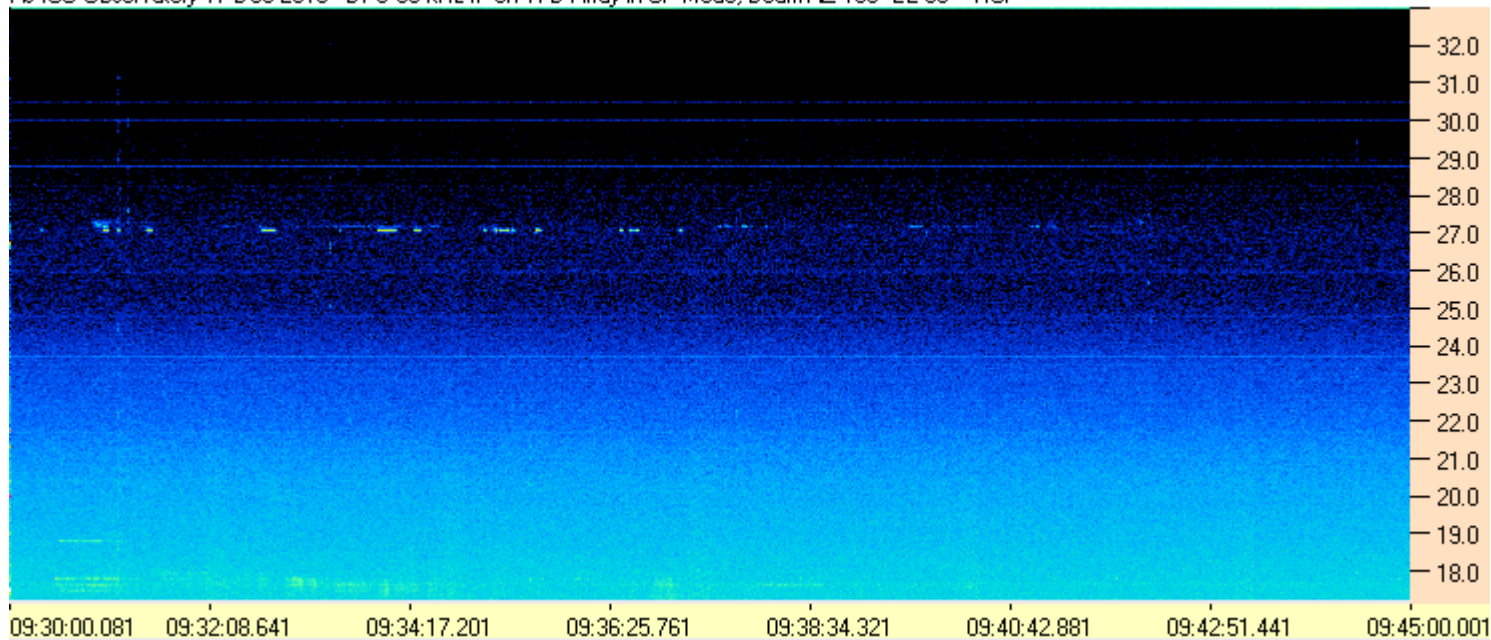
Dave

AJ4CO Observatory, 17 Dec 2013





AJ4CO Observatory 17 Dec 2013 - DPS 60 kHz IF on TFD Array in CP Mode, Beam AZ 180° EL 85° - RCP



AJ4CO Observatory 17 Dec 2013 - DPS 60 kHz IF on TFD Array in CP Mode, Beam AZ 180° EL 85° - LCP

