

Subject: [radiojove-data] 12 Dec 2013 non-Io-A

From: Dave Typinski <davetyp@typnet.net>

Date: 12/13/2013 18:55

To: RadioJove-Data <radiojove-data@lists.nasa.gov>

Here's some non-Io-A from the 12th. Was really weak, but it was there.

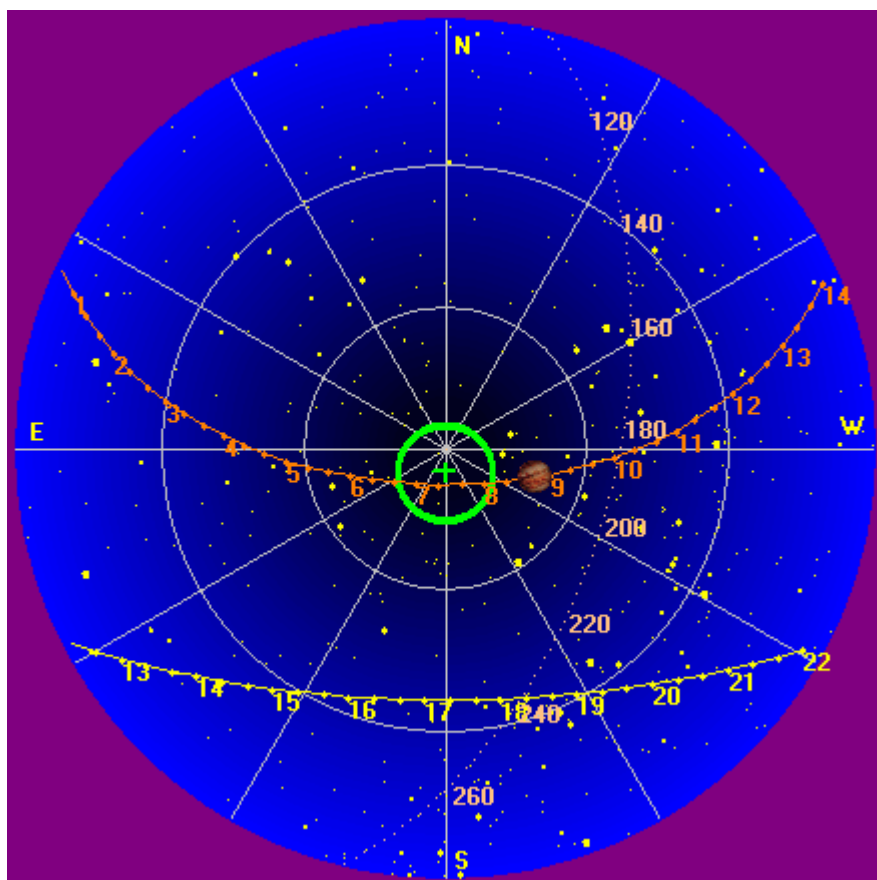
Jupiter was off axis from 8° to 22°.

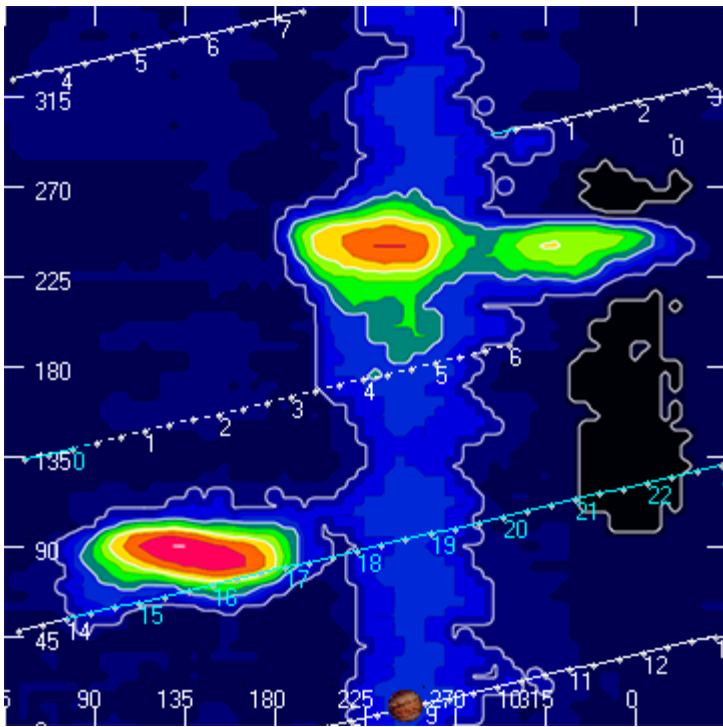
Jupiter was leading the Sun by 152°.

--

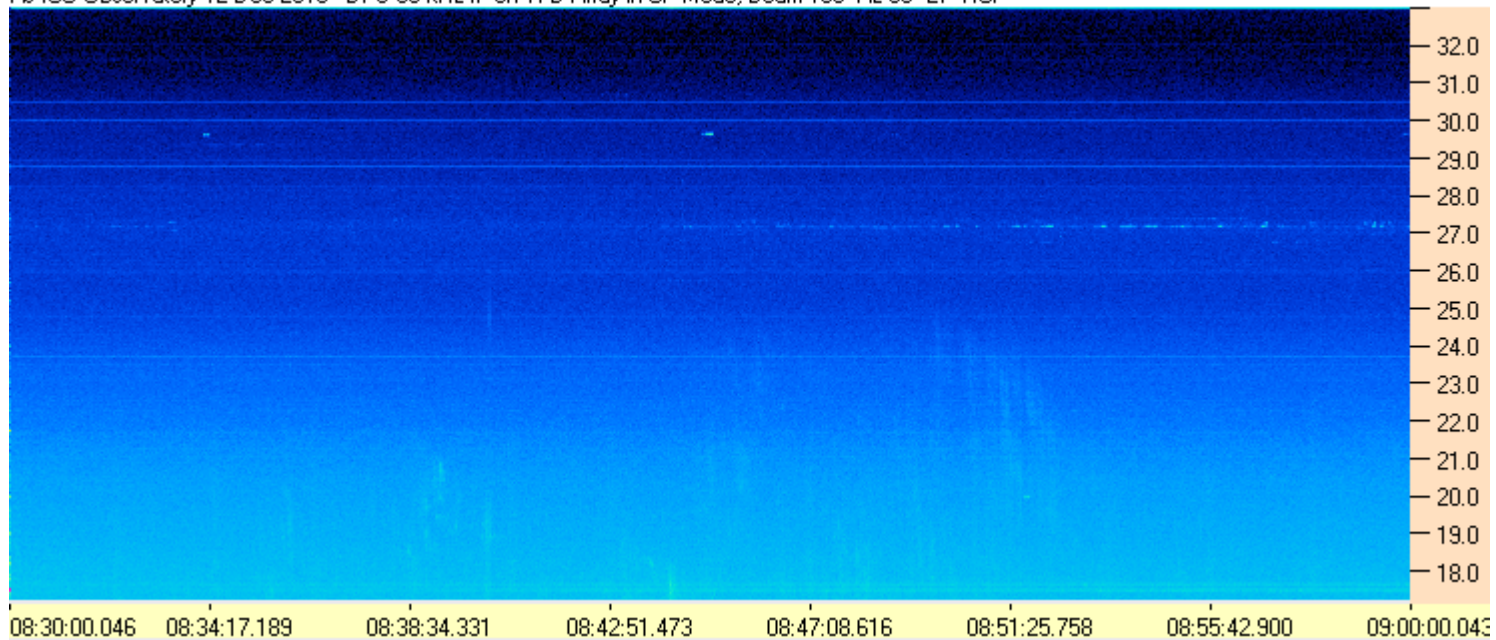
Dave

AJ4CO Observatory, 12 Dec 2013

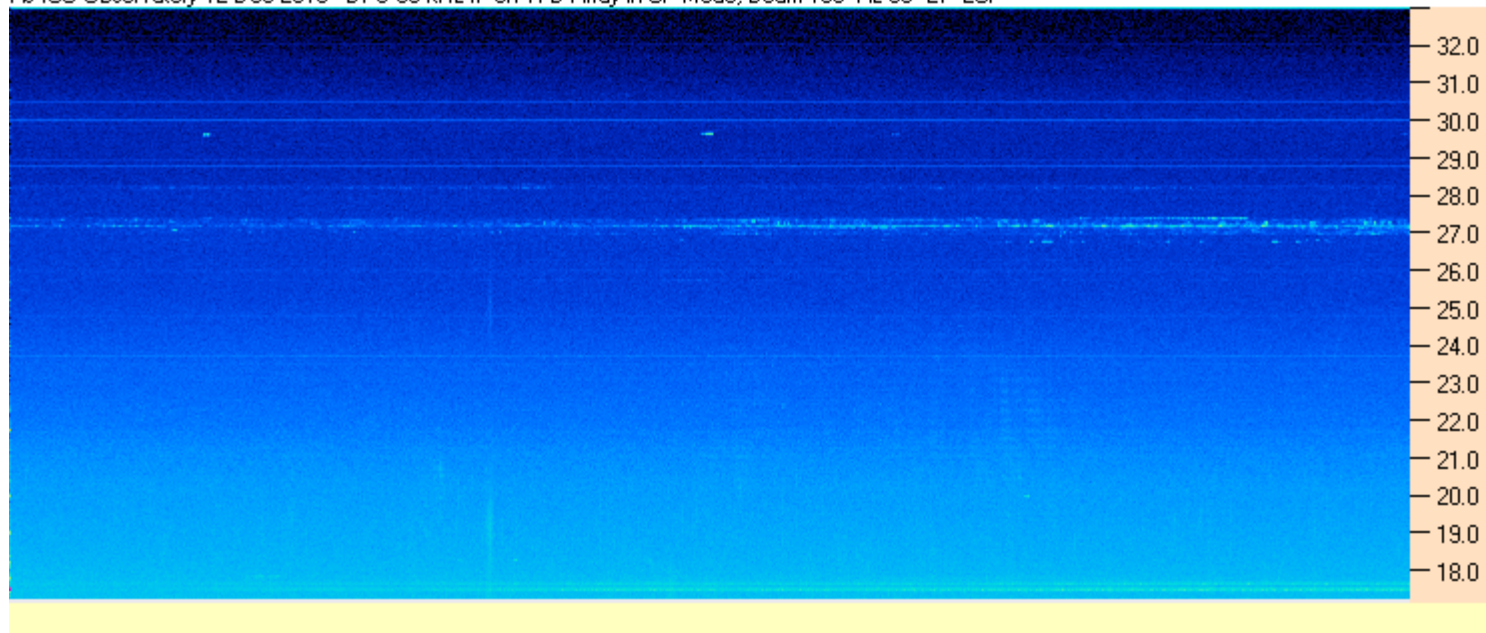




AJ4CO Observatory 12 Dec 2013 - DPS 60 kHz IF on TFD Array in CP Mode, Beam 180° Az 85° El - RCP



AJ4CO Observatory 12 Dec 2013 - DPS 60 kHz IF on TFD Array in CP Mode, Beam 180° Az 85° EI - LCP



AJ4CO Observatory 12 Dec 2013 - FS-200 30 kHz IF on TFD Array in CP Mode, Beam 180° Az 85° EI - RCP+LCP Summed

