

Subject: [radiojove-data] 30 Nov 2013 non-Io-C
From: Dave Typinski <davetyp@typnet.net>
Date: 12/02/2013 17:49
To: RadioJove-Data <radiojove-data@lists.nasa.gov>

Adding to Wes's report, here's the brief bit of weak non-Io-C from Saturday morning. RCP, looks like L bursts.

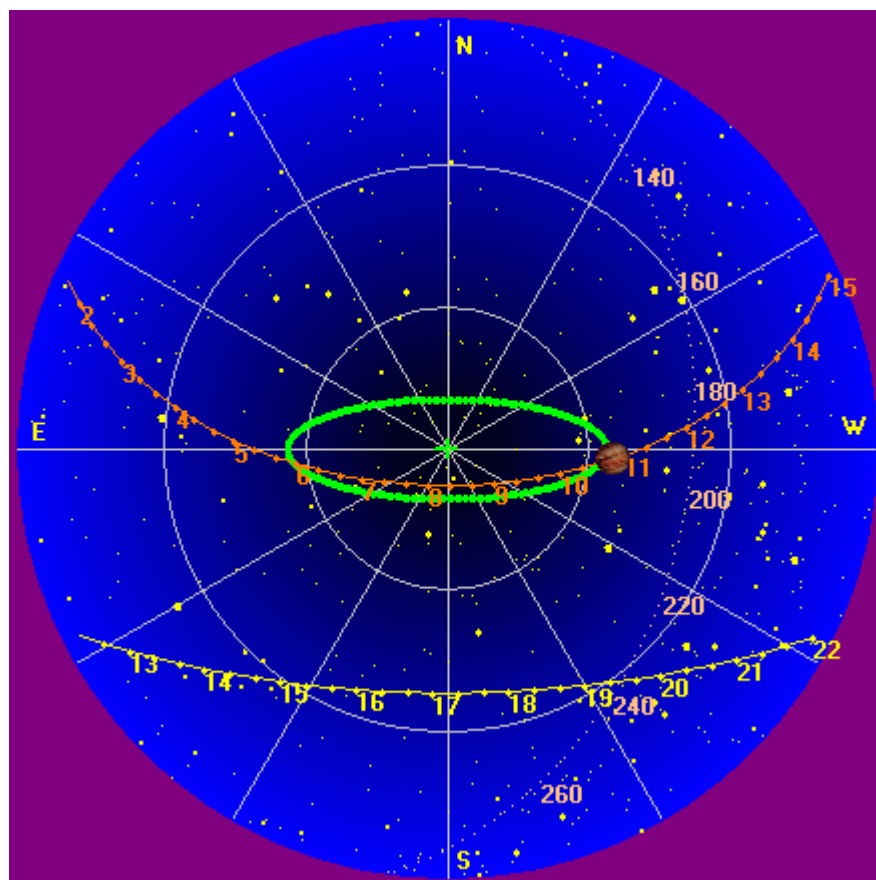
Jupiter was off axis from 32° to 36°.

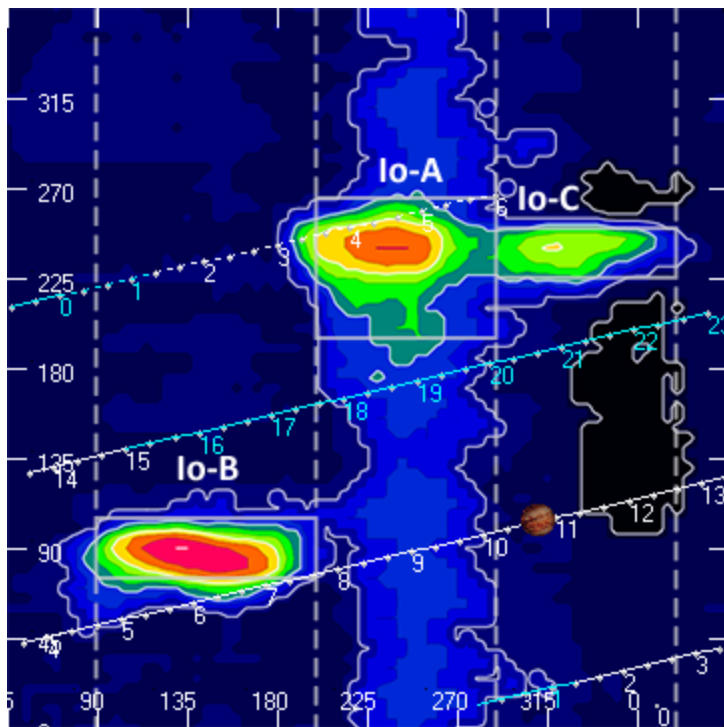
Jupiter was leading the Sun by 139°.

--

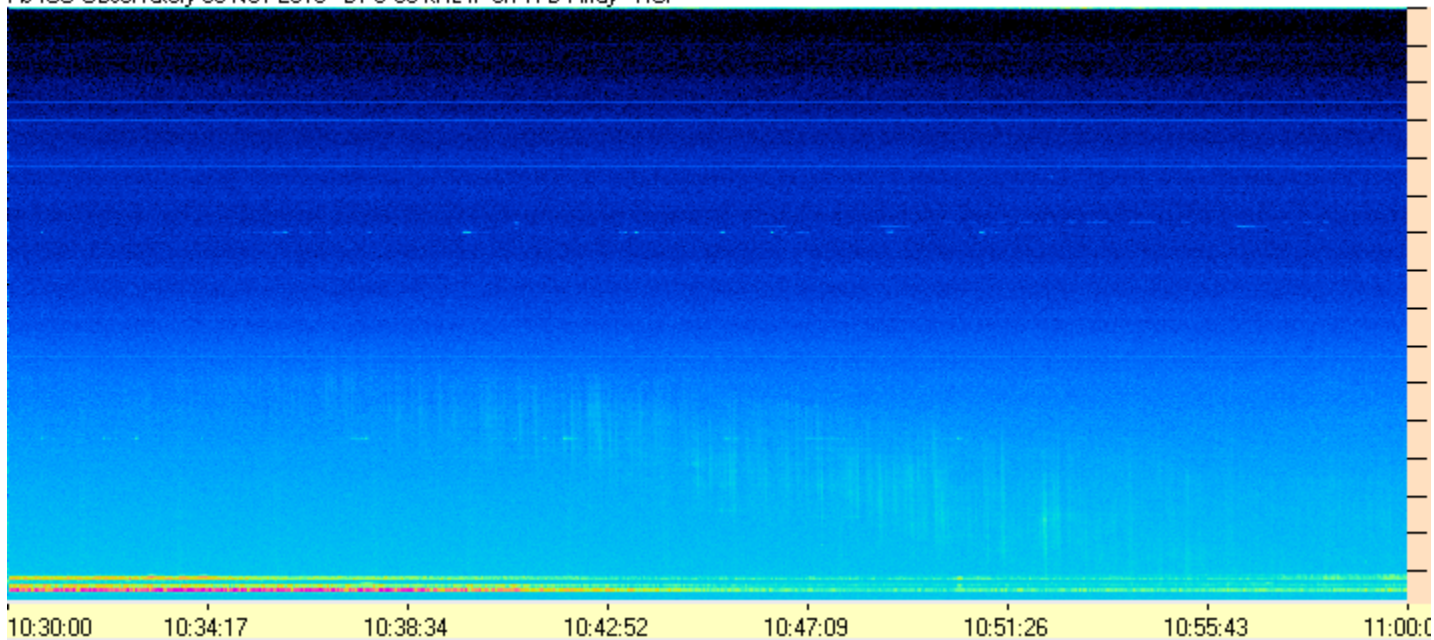
Dave

AJ4CO Observatory, 30 Nov 2013

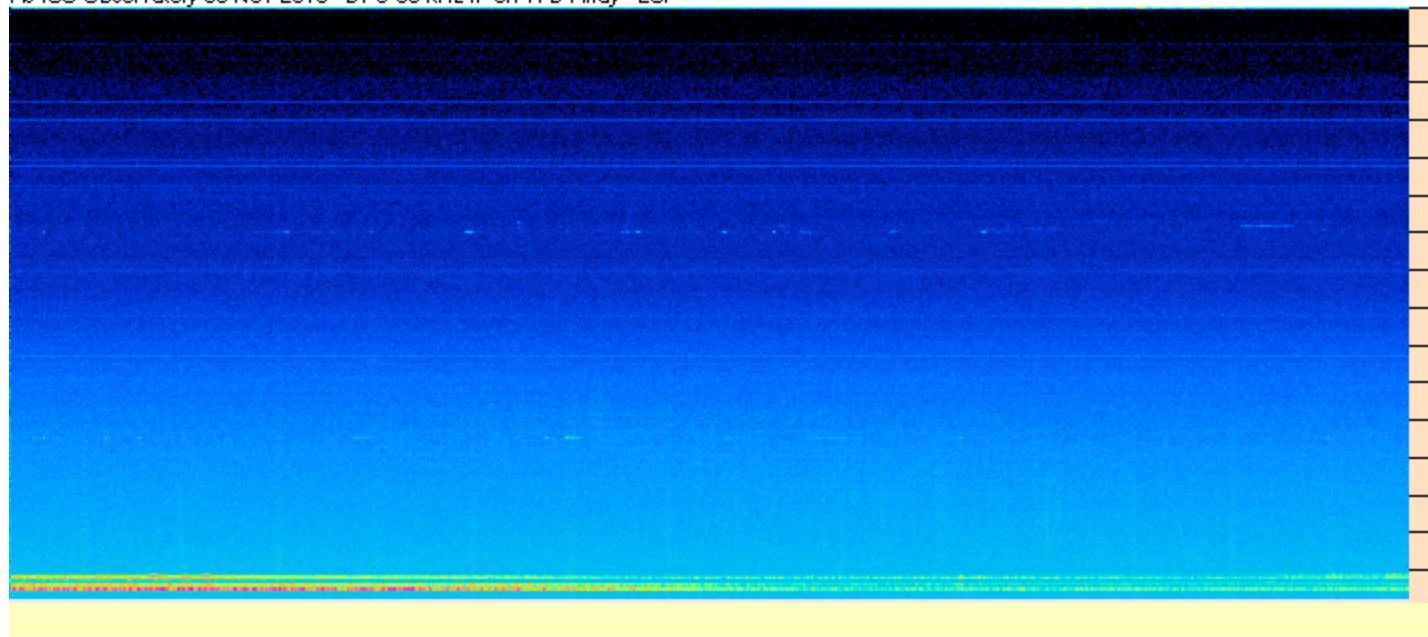




AJ4CD Observatory 30 Nov 2013 - DPS 60 kHz IF on TFD Array - RCP



AJ4CO Observatory 30 Nov 2013 - DPS 60 kHz IF on TFD Array - LCP



AJ4CO Observatory 30 Nov 2013 - FS-200 30 kHz IF on RJ Array

