

Subject: [radiojove-data] 27 Nov 2013 non-Io-B
From: Dave Typinski <davetyp@typnet.net>
Date: 11/27/2013 22:39
To: RadioJove-Data <radiojove-data@lists.nasa.gov>

Here's some non-Io-B from this morning on the DPS. All L bursts in RCP. Some modulation lanes evident.

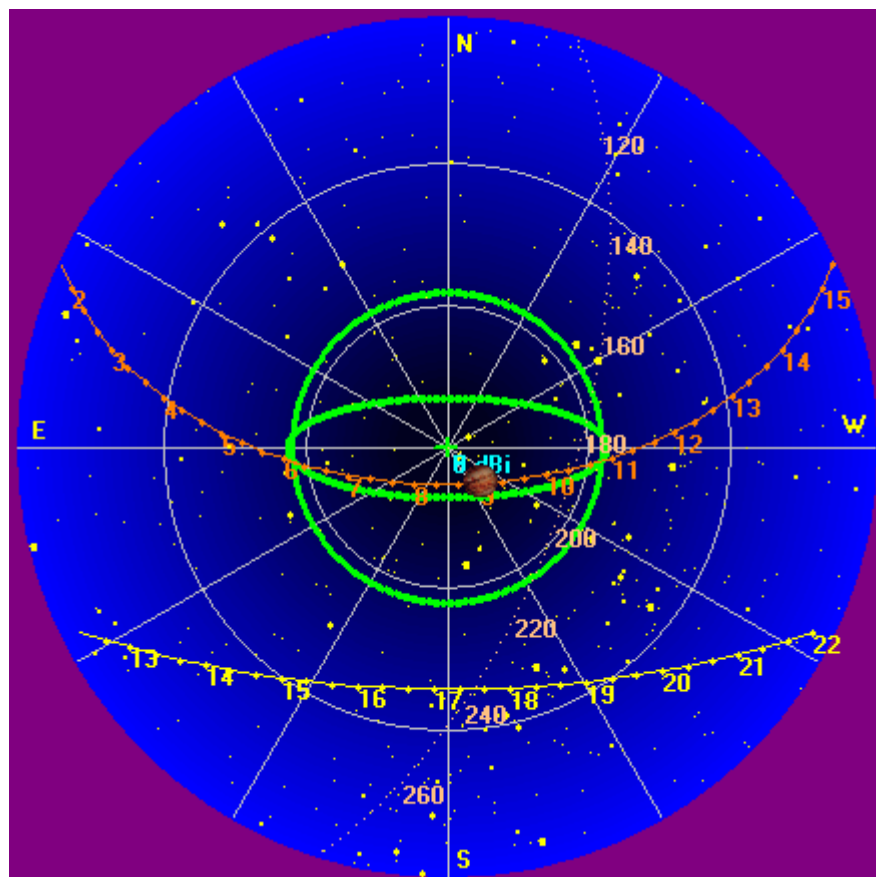
Nada on the Jove array (FS-200 spectro). Jove receivers offline for RFI testing.

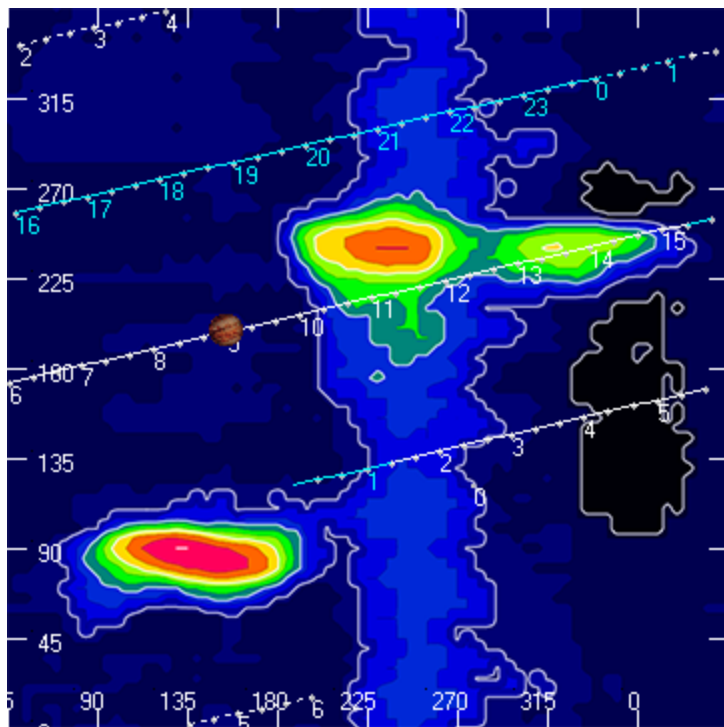
Jupiter was off axis from 8° to 17°.

Jupiter was leading the Sun by 135°.

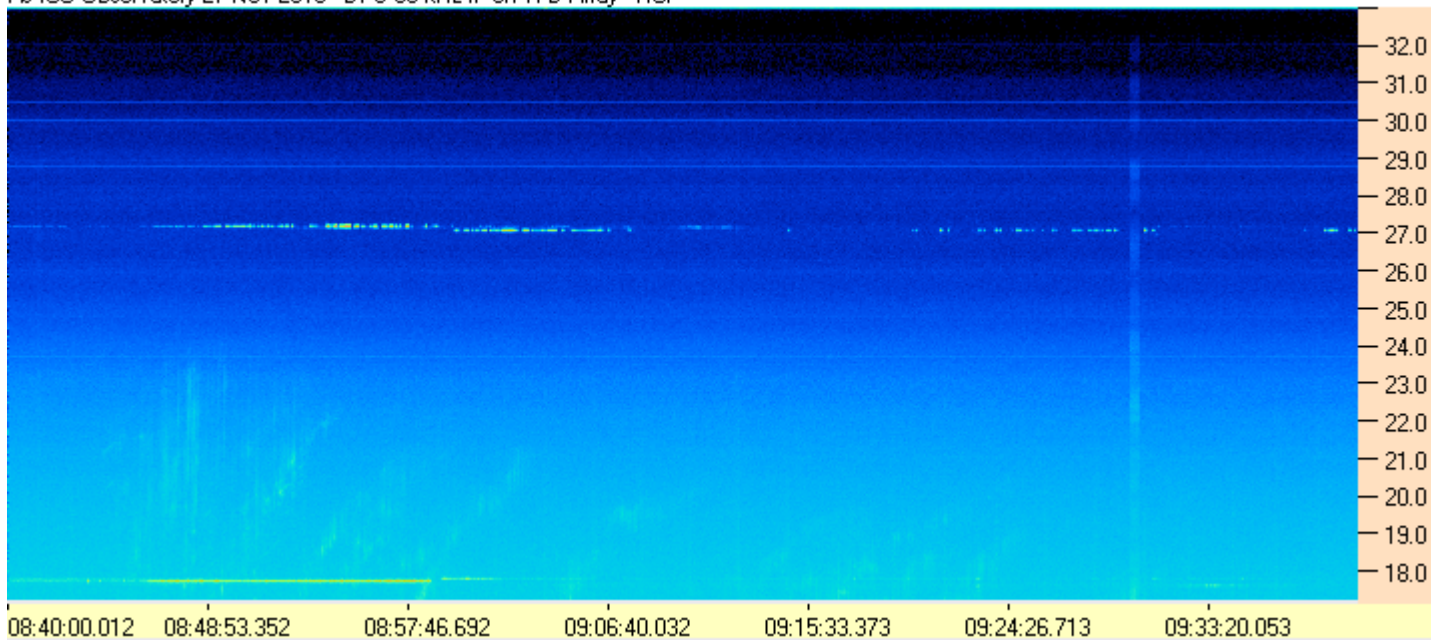
--
Dave

AJ4CO Observatory, 27 Nov 2013

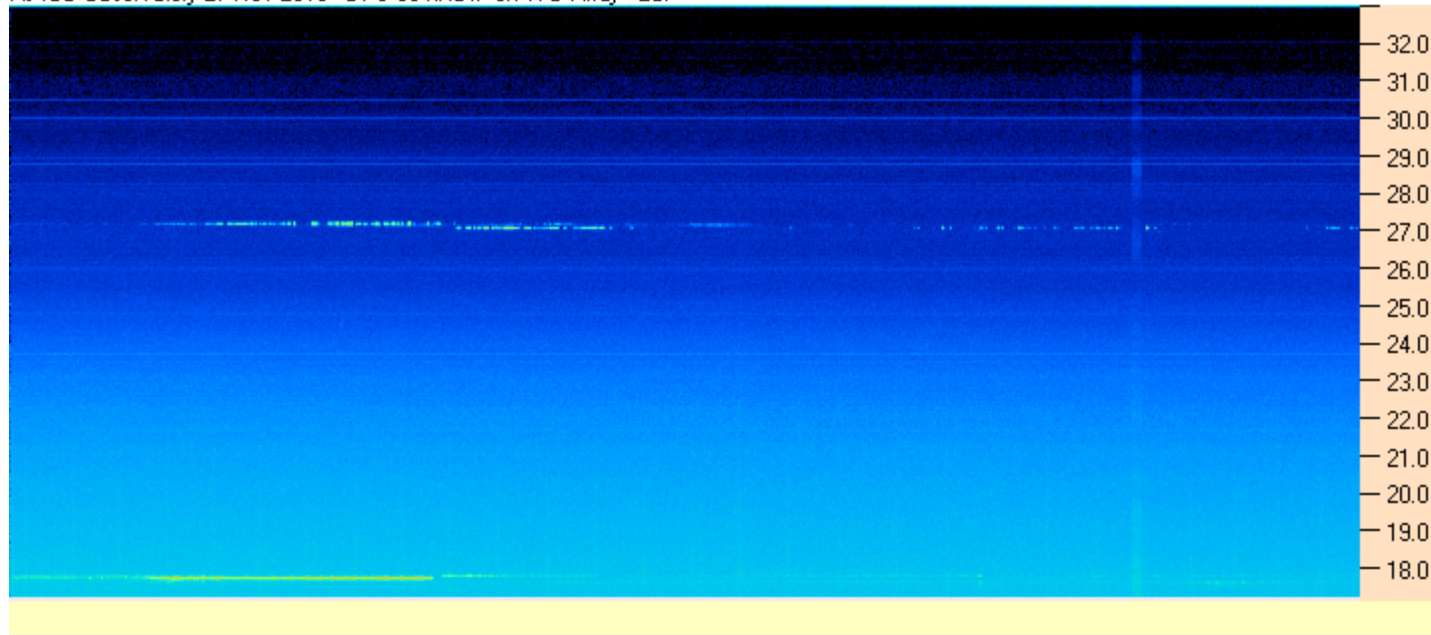




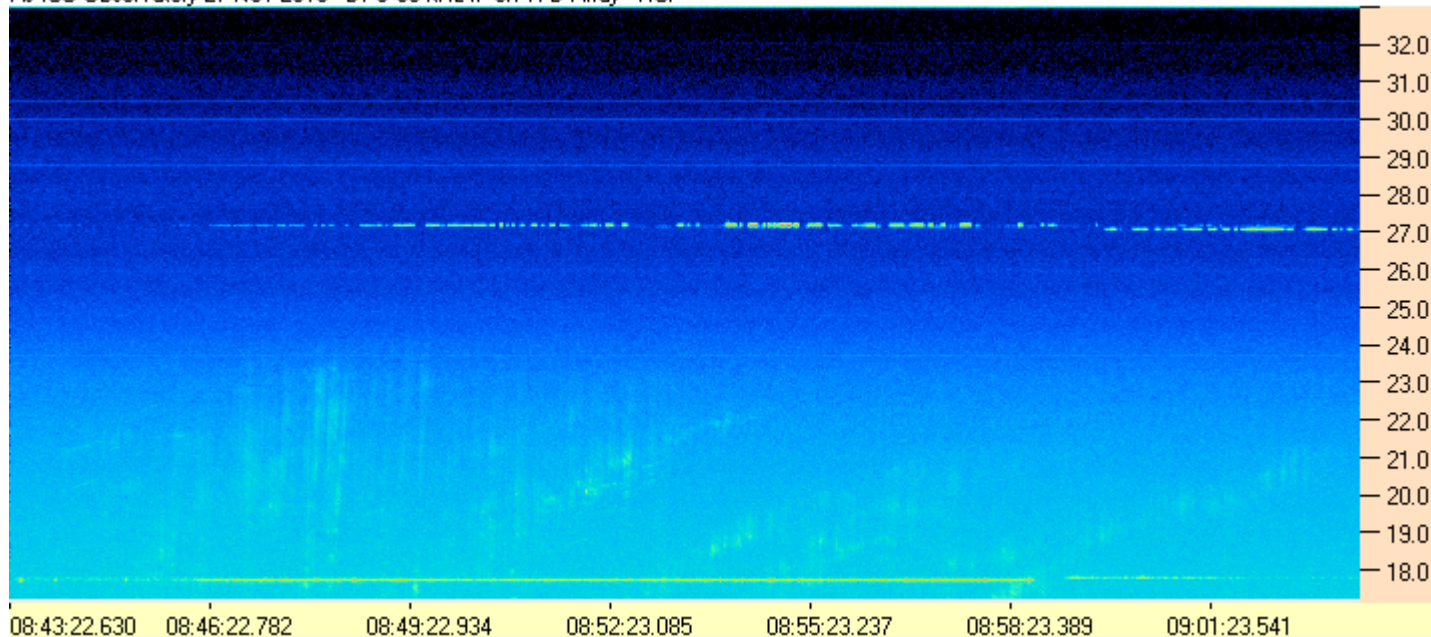
AJ4CD Observatory 27 Nov 2013 - DPS 60 kHz IF on TFD Array - RCP



AJ4CO Observatory 27 Nov 2013 - DPS 60 kHz IF on TFD Array - LCP



AJ4CO Observatory 27 Nov 2013 - DPS 60 kHz IF on TFD Array - RCP



AJ4CO Observatory 27 Nov 2013 - DPS 60 kHz IF on TFD Array - LCP

