

**Subject:** [radiojove-data] 25 Nov 2013 non-Io-A/C  
**From:** Dave Typinski <davetyp@typnet.net>  
**Date:** 11/25/2013 20:56  
**To:** RadioJove-Data <radiojove-data@lists.nasa.gov>

Here's some really weak non-Io-A/C from this morning on the DPS. All L bursts in RCP. A few brief, faint modulation lanes evident.

Nada on the Jove array (FS-200 spectro and the Jove receivers).

Jupiter was off axis from 17° to 43°.

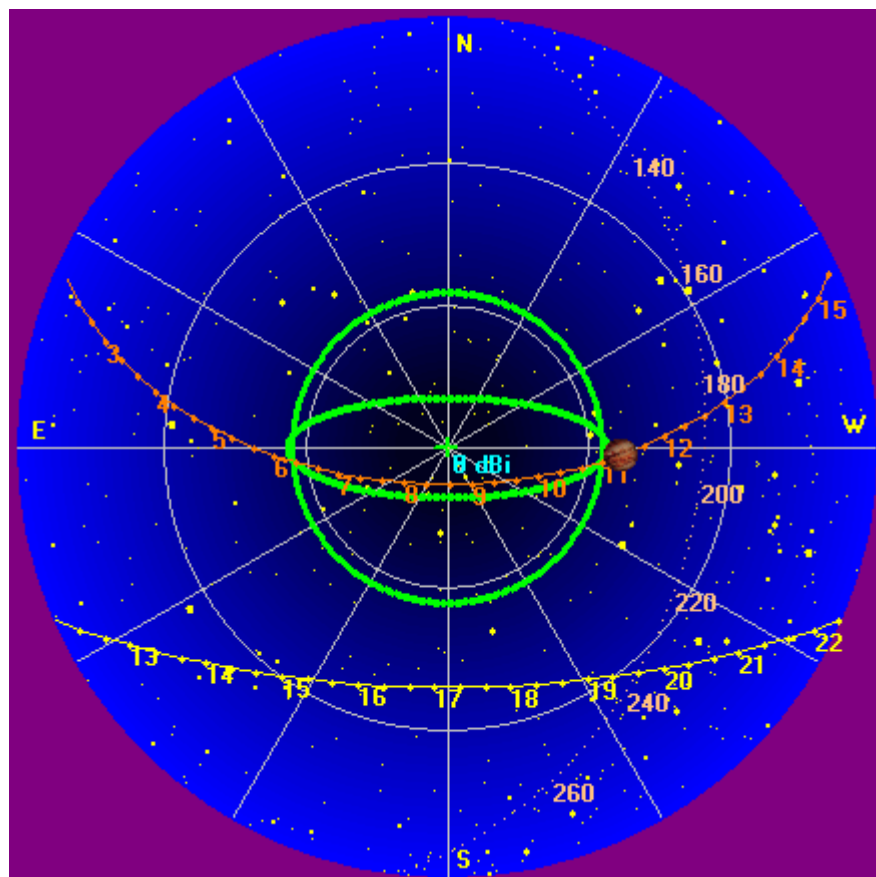
Jupiter was leading the Sun by 133°.

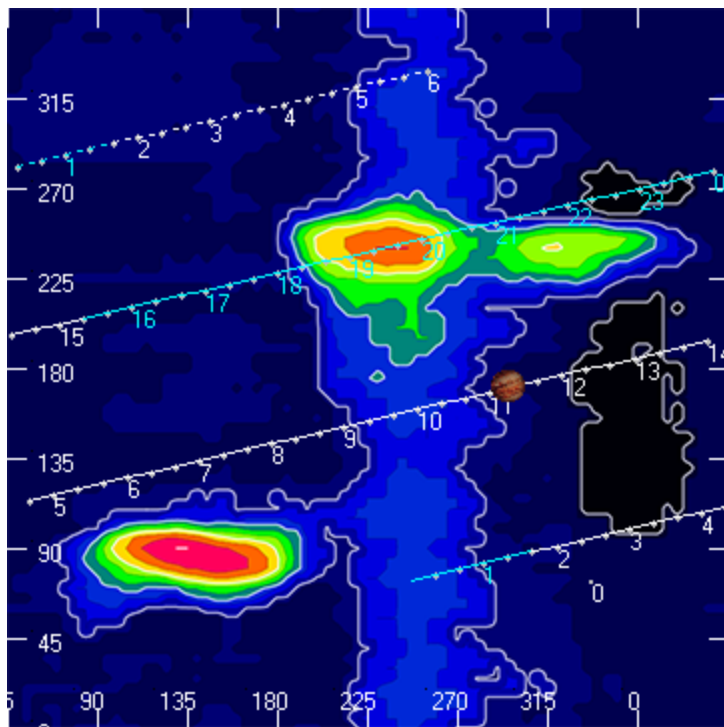
--  
Dave

---

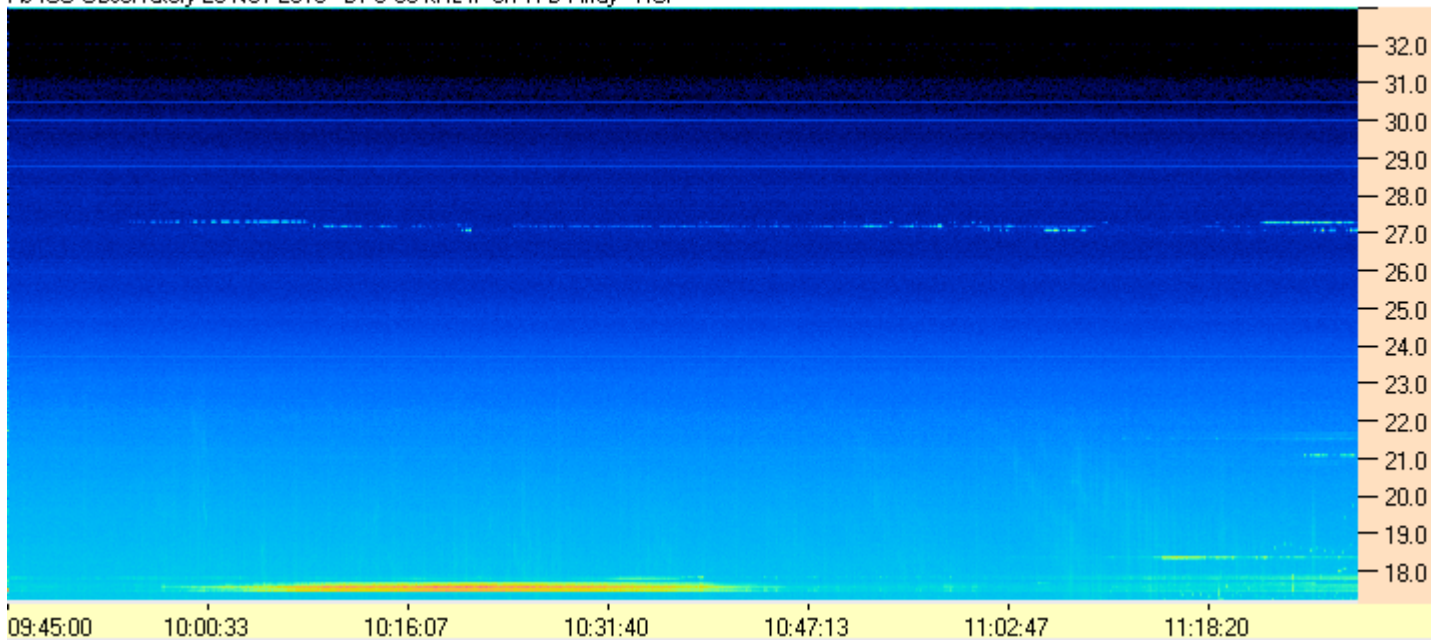
**AJ4CO Observatory, 25 Nov 2013**

---

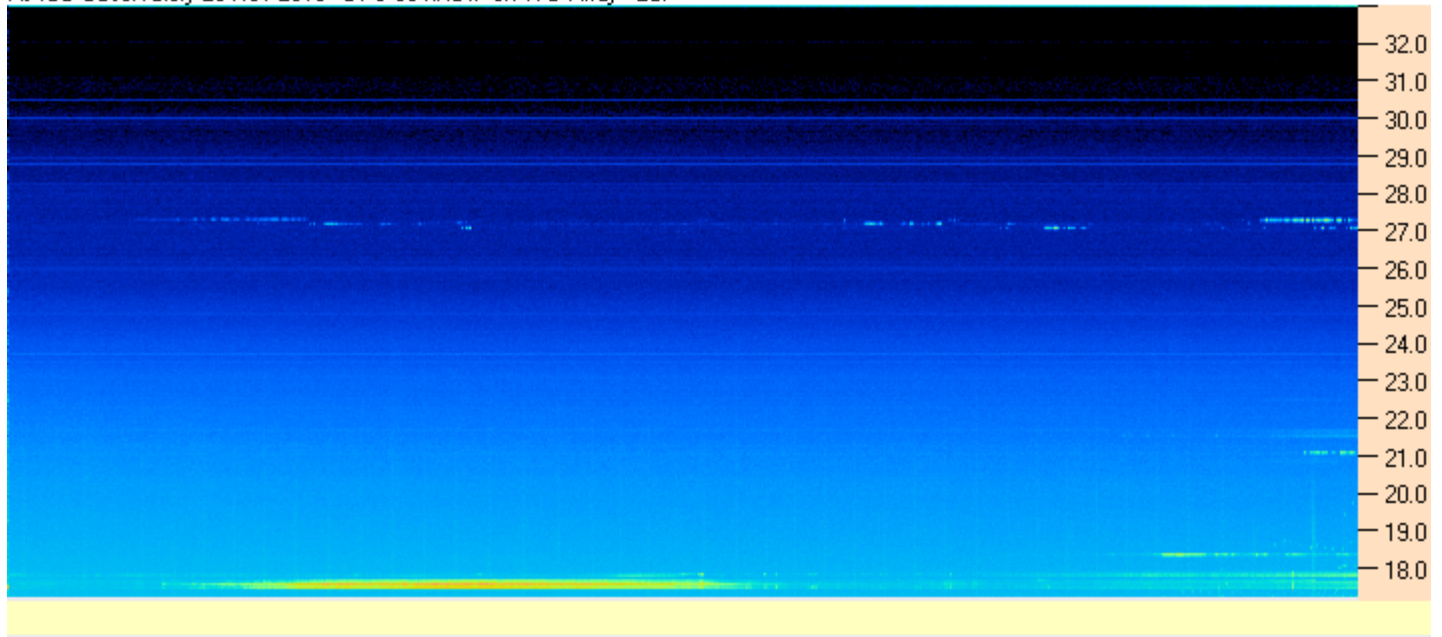




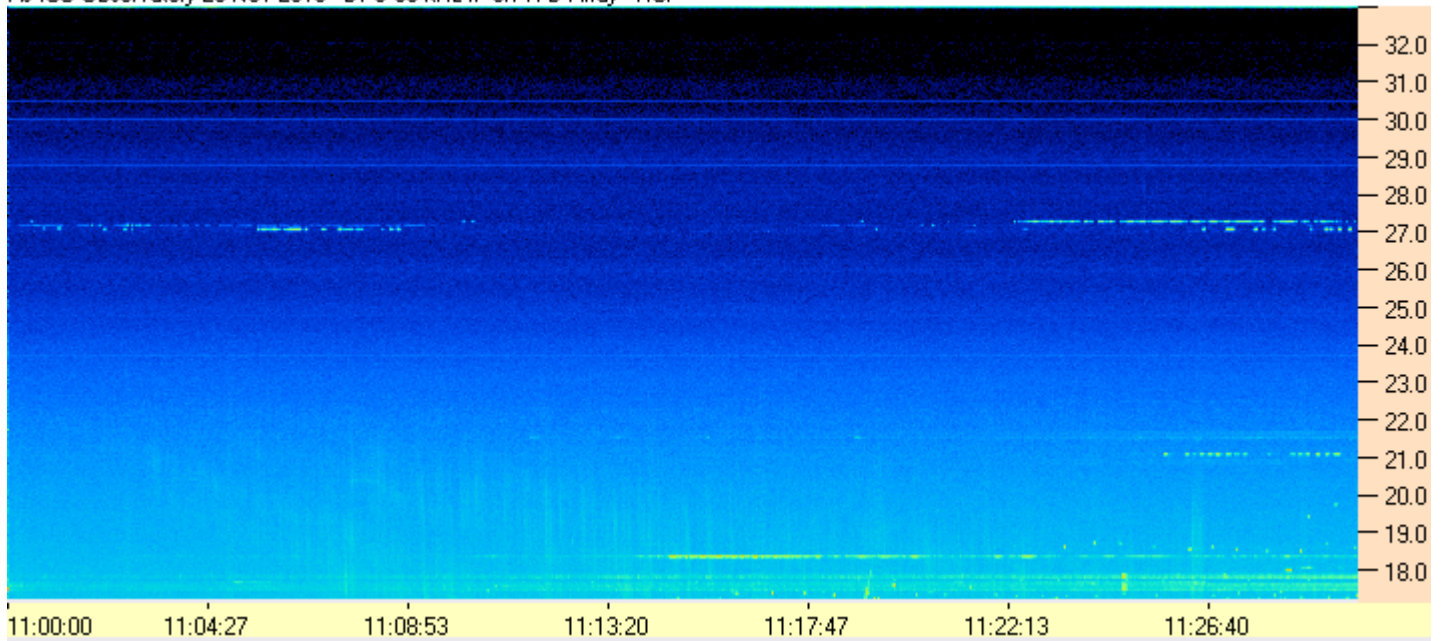
AJ4CD Observatory 25 Nov 2013 - DPS 60 kHz IF on TFD Array - RCP



AJ4CO Observatory 25 Nov 2013 - DPS 60 kHz IF on TFD Array - LCP



AJ4CO Observatory 25 Nov 2013 - DPS 60 kHz IF on TFD Array - RCP



AJ4CO Observatory 25 Nov 2013 - DPS 60 kHz IF on TFD Array - LCP

