

Subject: [radiojove-data] 23 Nov 2013 non-Io-A

From: Dave Typinski <davetyp@typnet.net>

Date: 11/23/2013 20:51

To: RadioJove-Data <radiojove-data@lists.nasa.gov>

After the disappointing Io-B showing, some decently strong non-Io-A came knocking. All L bursts in RCP. No modulation lanes evident.

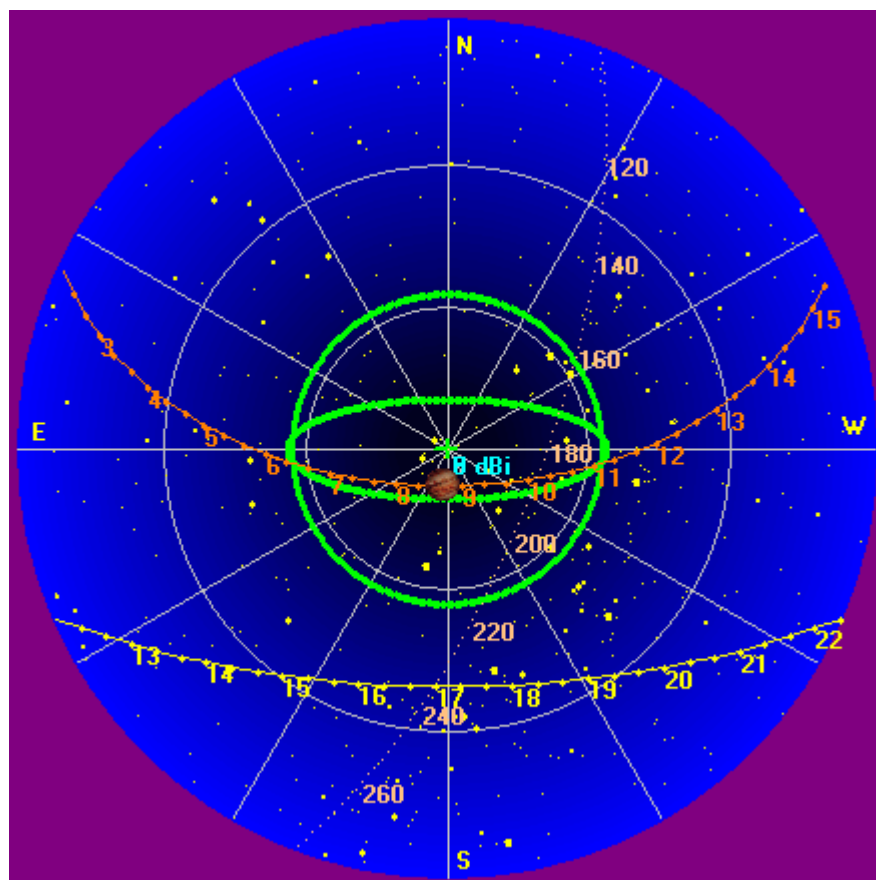
Jupiter was off axis by 8°.

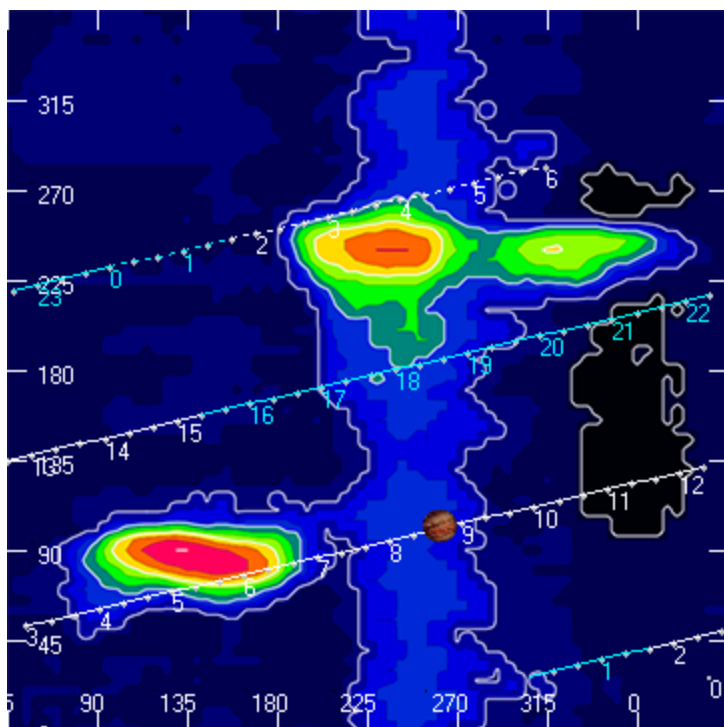
Jupiter was leading the Sun by 131°.

--

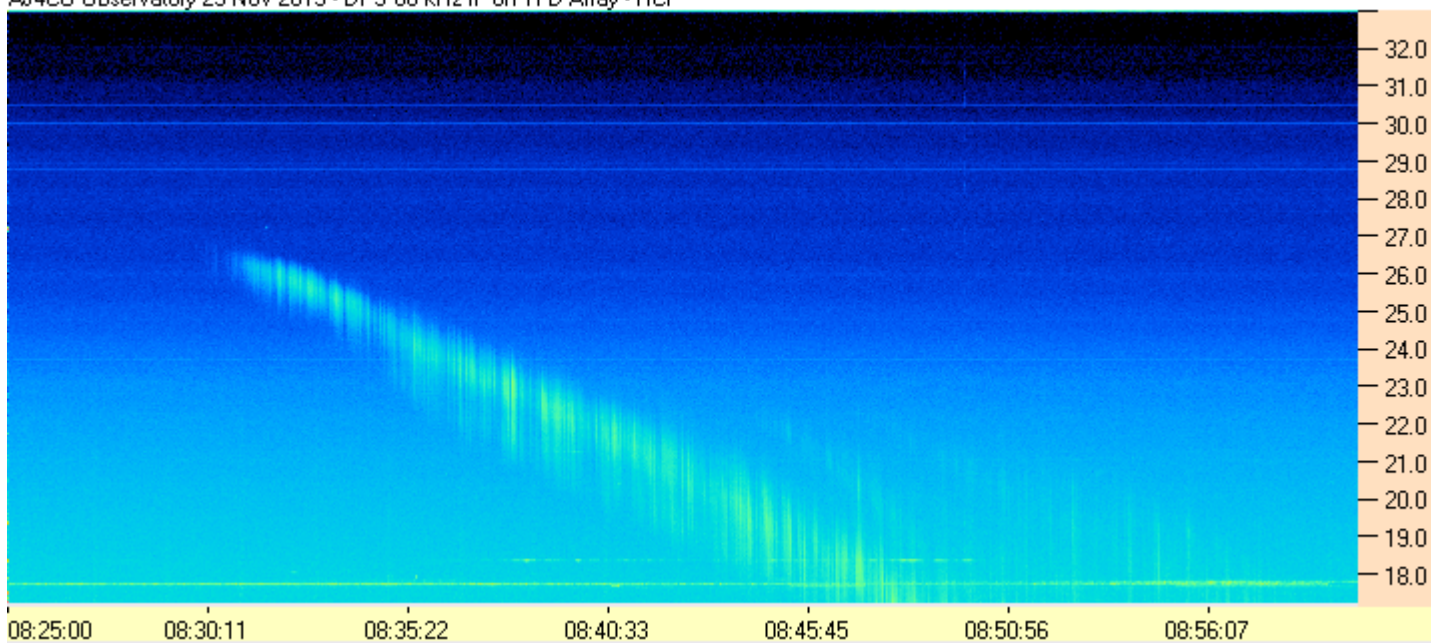
Dave

AJ4CO Observatory, 23 Nov 2013

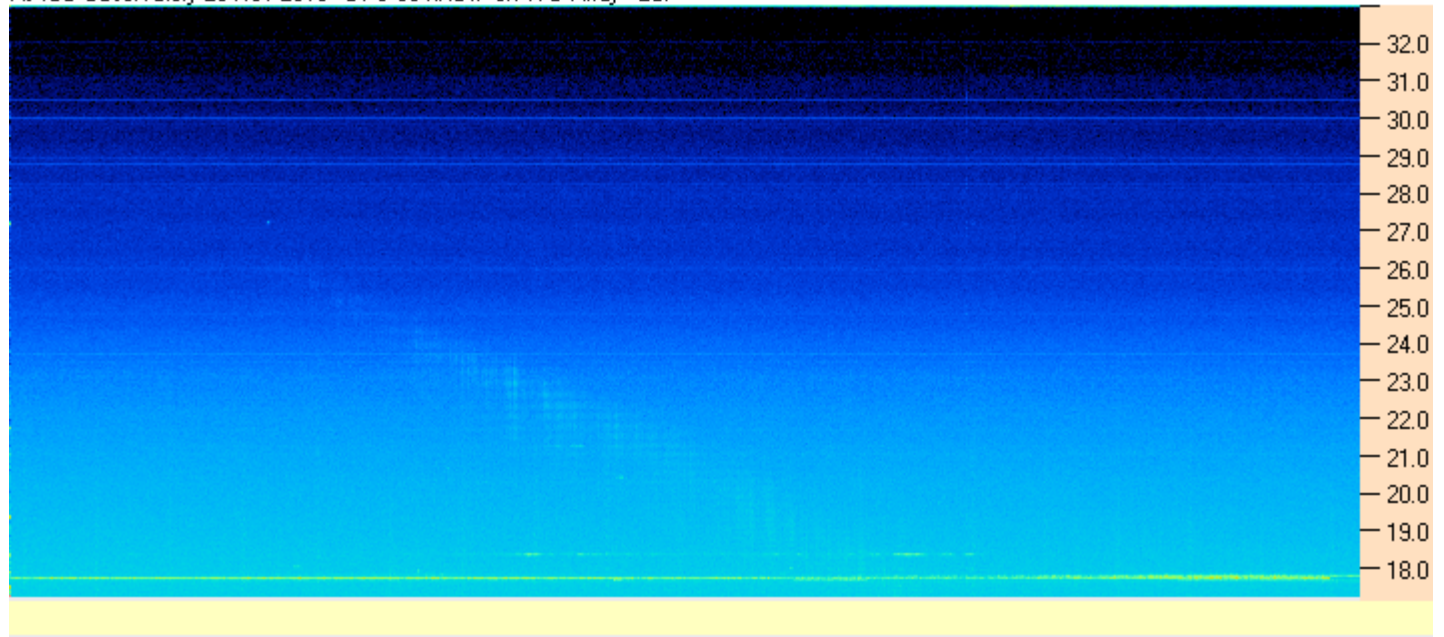




AJ4CD Observatory 23 Nov 2013 - DPS 60 kHz IF on TFD Array - RCP



AJ4CO Observatory 23 Nov 2013 - DPS 60 kHz IF on TFD Array - LCP



AJ4CO Observatory 23 Nov 2013 - FS-200 30 kHz IF on RJ Array

