

Subject: [radiojove-data] 23 Nov 2013 Io-B
From: Dave Typinski <davetyp@typnet.net>
Date: 11/23/2013 20:50
To: RadioJove-Data <radiojove-data@lists.nasa.gov>

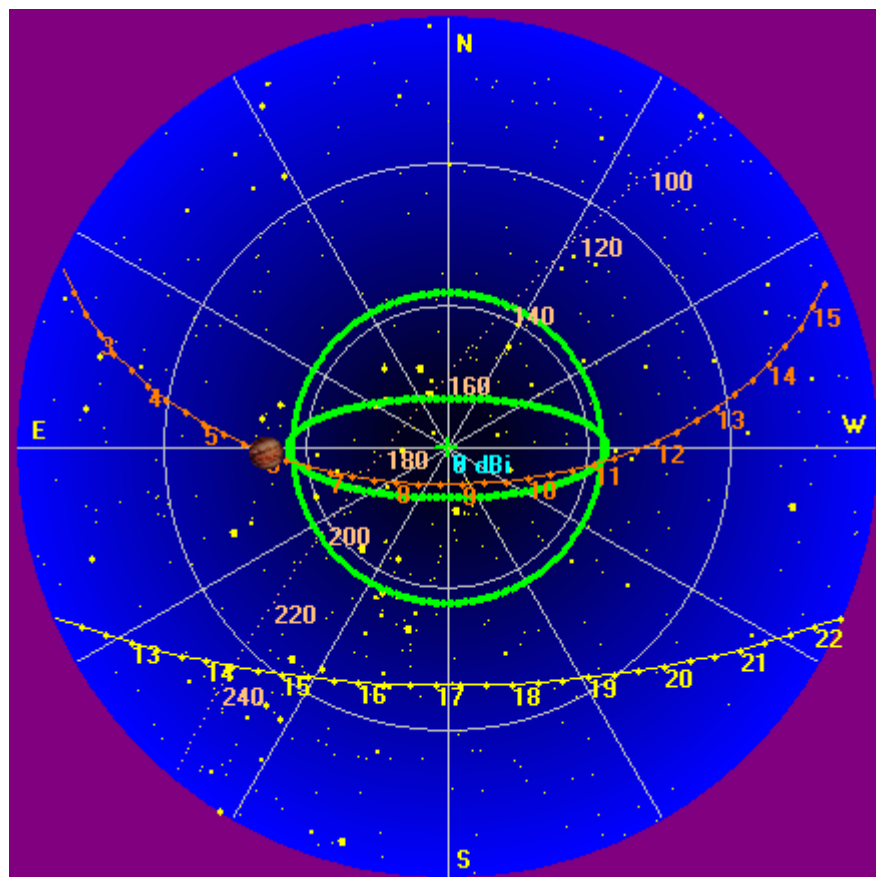
Yet more weak Io-B, much as Tom noted. Some brief LCP early on, but mostly RCP. Looks like weakish S bursts from about 0600 to 0630 UTC between 17 and 19 MHz. One long N event from 23 down to 20 MHz, from 0550 to 0640. No modulation lanes evident. Nothing visible on the 20 MHz strip chart.

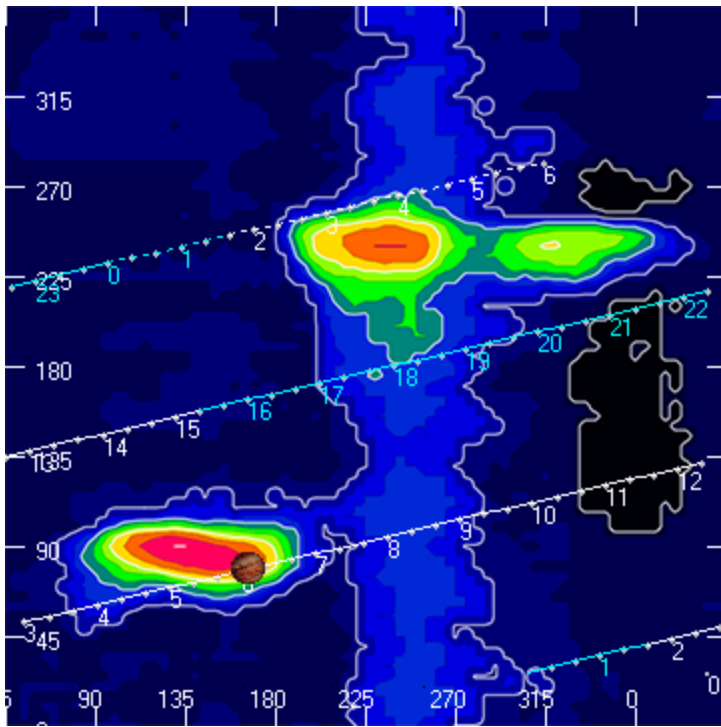
Jupiter was off axis by 47° to 28° .

Jupiter was leading the Sun by 131° .

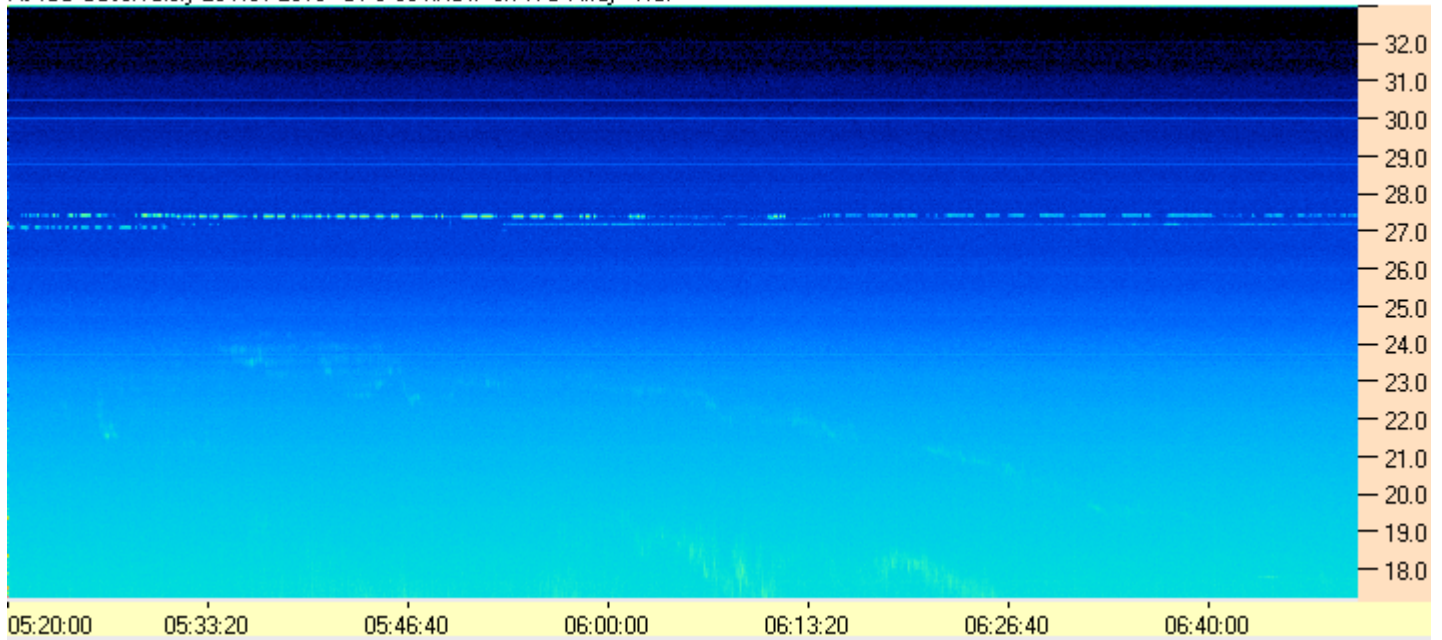
--
Dave

AJ4CO Observatory, 23 Nov 2013

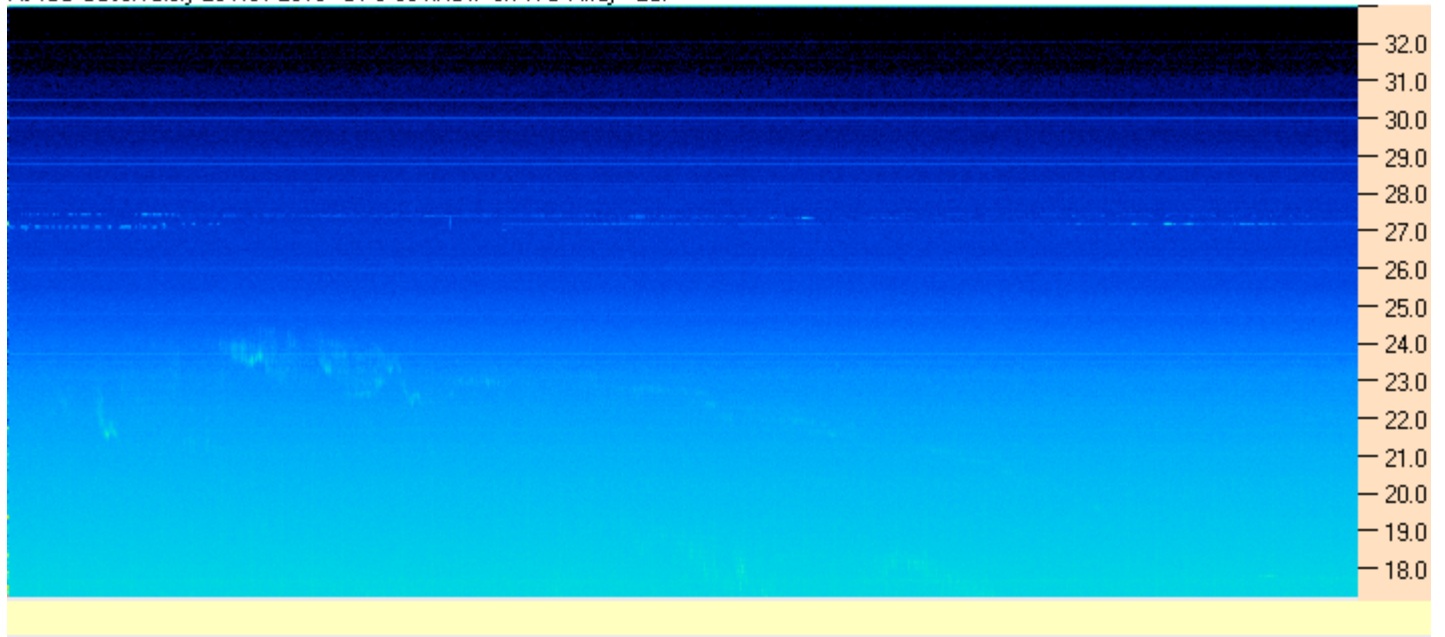




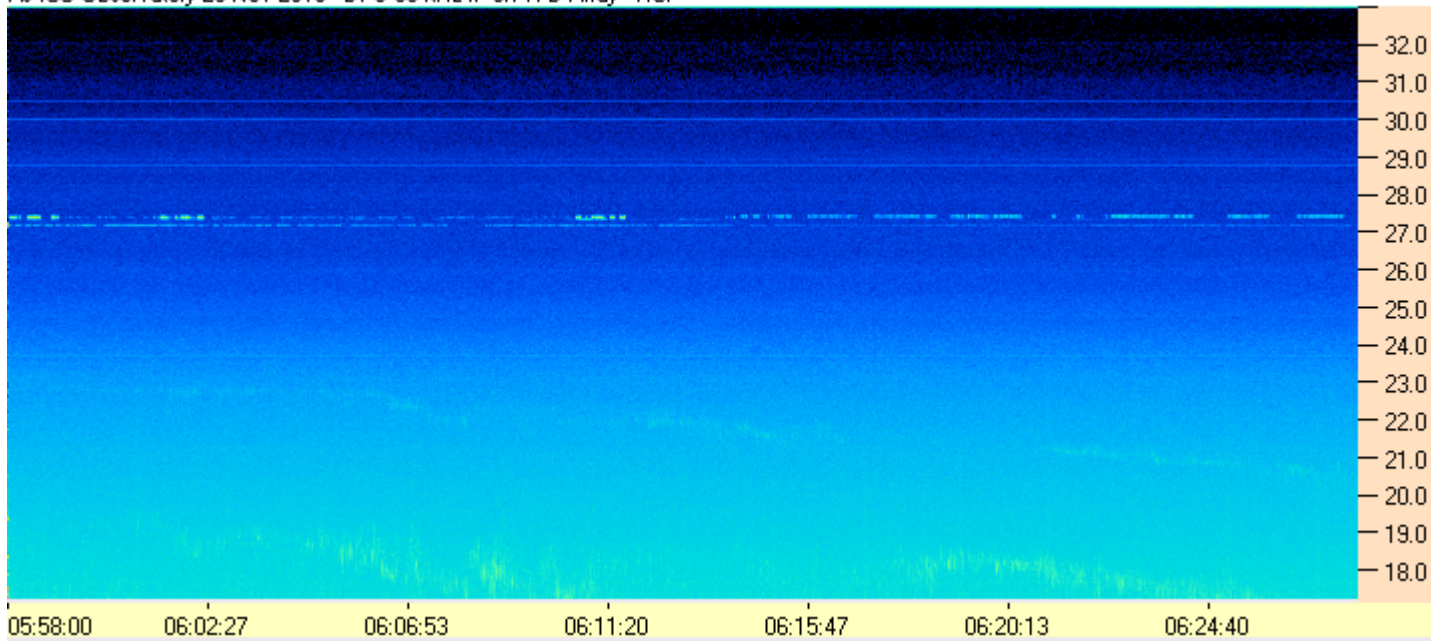
AJ4CD Observatory 23 Nov 2013 - DPS 60 kHz IF on TFD Array - RCP



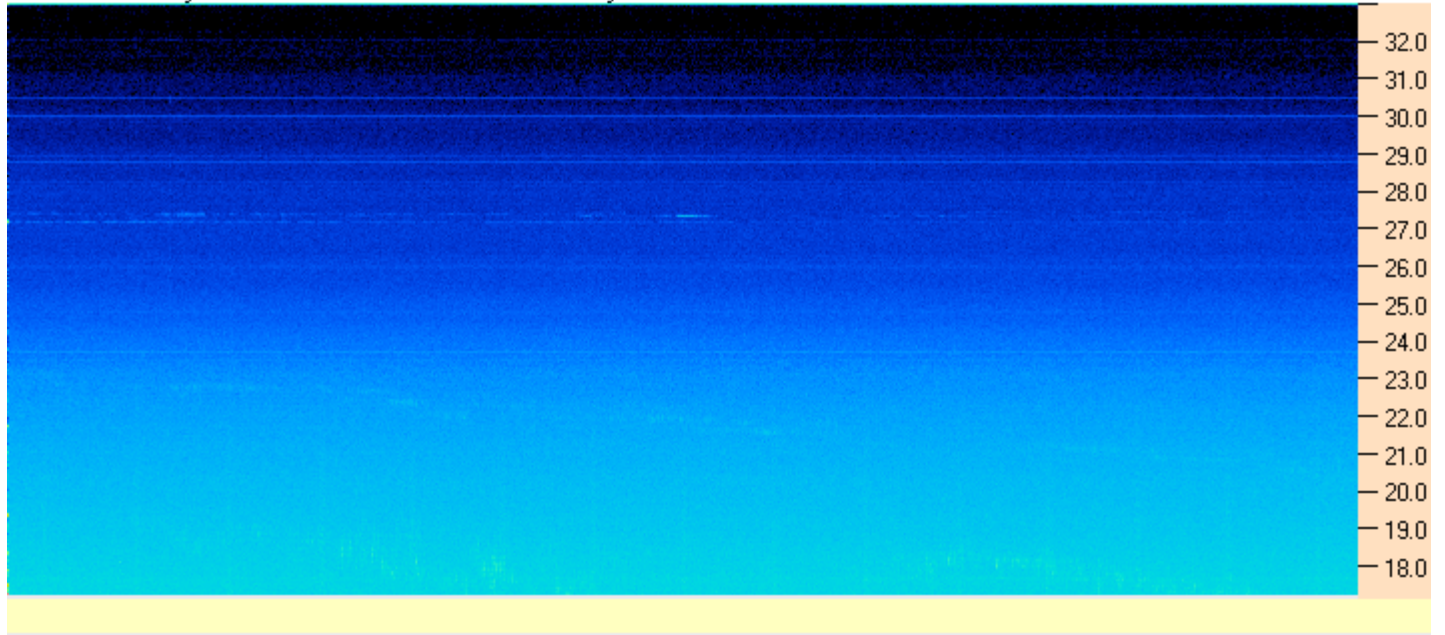
AJ4CO Observatory 23 Nov 2013 - DPS 60 kHz IF on TFD Array - LCP



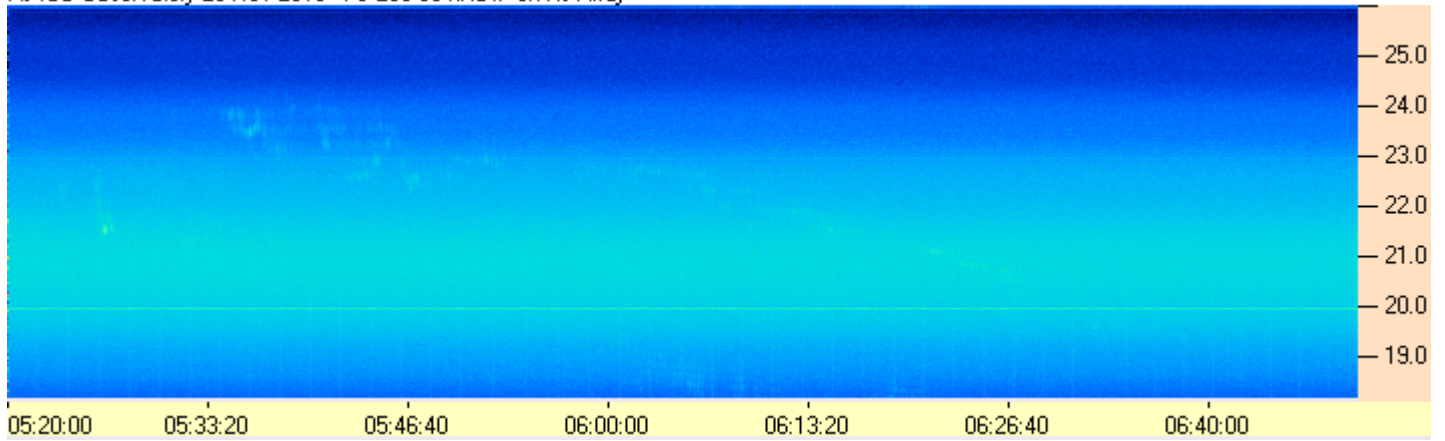
AJ4CO Observatory 23 Nov 2013 - DPS 60 kHz IF on TFD Array - RCP



AJ4CO Observatory 23 Nov 2013 - DPS 60 kHz IF on TFD Array - LCP



AJ4CO Observatory 23 Nov 2013 - FS-200 30 kHz IF on RJ Array



AJ4CO Observatory 23 Nov 2013 - FS-200 30 kHz IF on RJ Array

