

Subject: [radiojove-data] 19 Nov 2013 non-Io-B
From: Dave Typinski <davetyp@typnet.net>
Date: 11/22/2013 19:32
To: RadioJove-Data <radiojove-data@lists.nasa.gov>

Here is some weak non-Io-B from Tuesday morning. Almost pure RCP. Emission observed from 17 to 25 MHz.

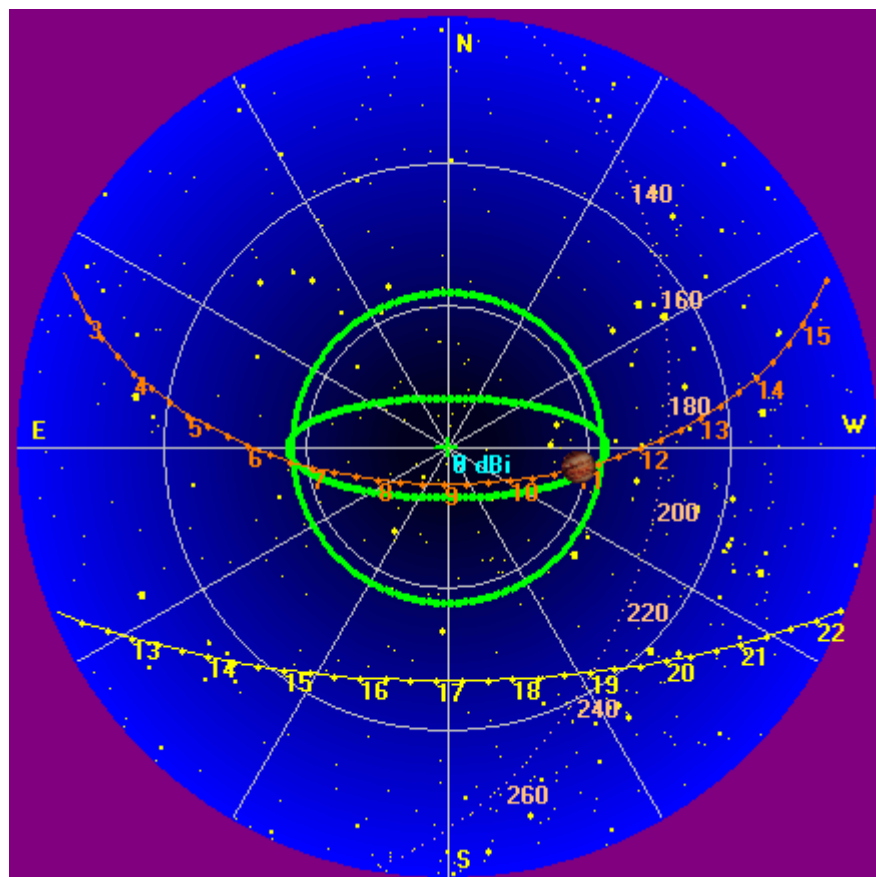
Very weak; did not show up in the FS-200 or the RJ receivers.

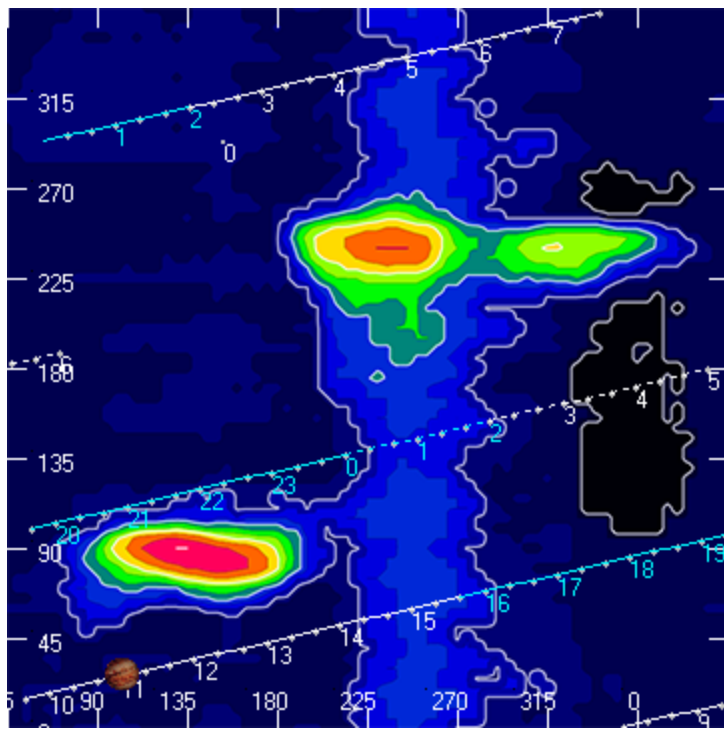
Jupiter was off axis from 22° to 29°.

Jupiter was leading the Sun by 127°.

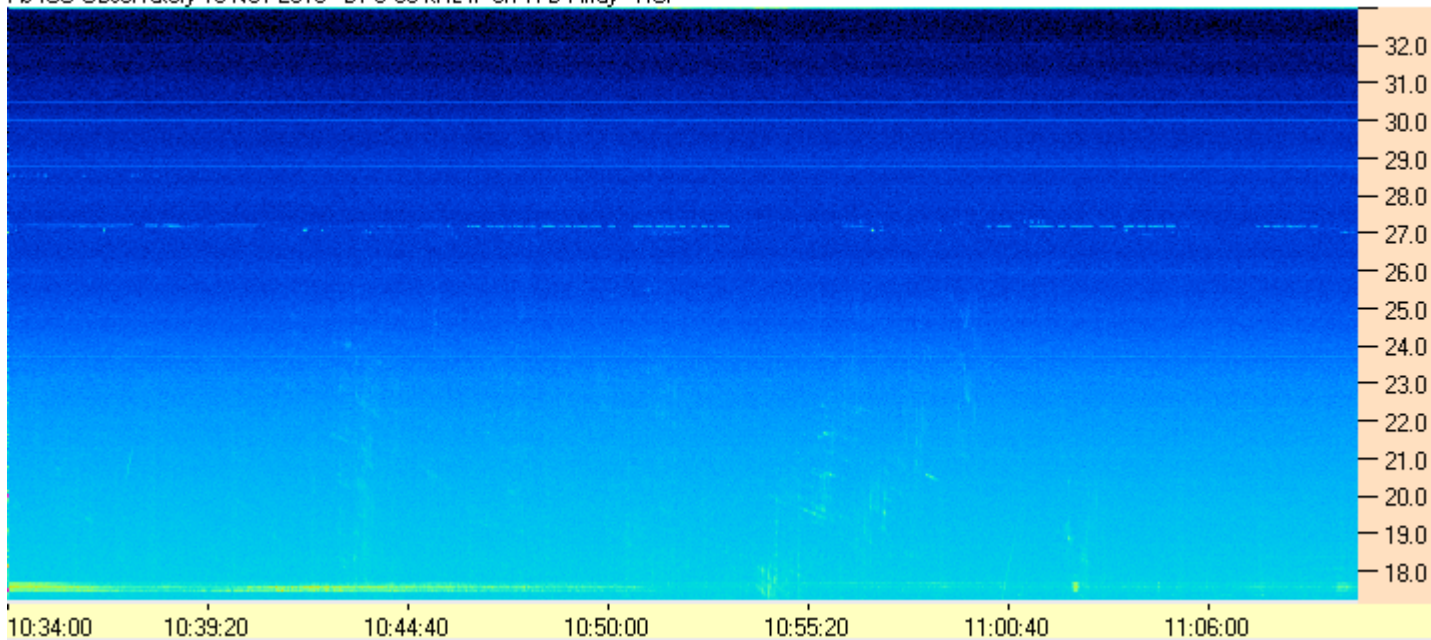
--
Dave

AJ4CO Observatory, 19 Nov 2013

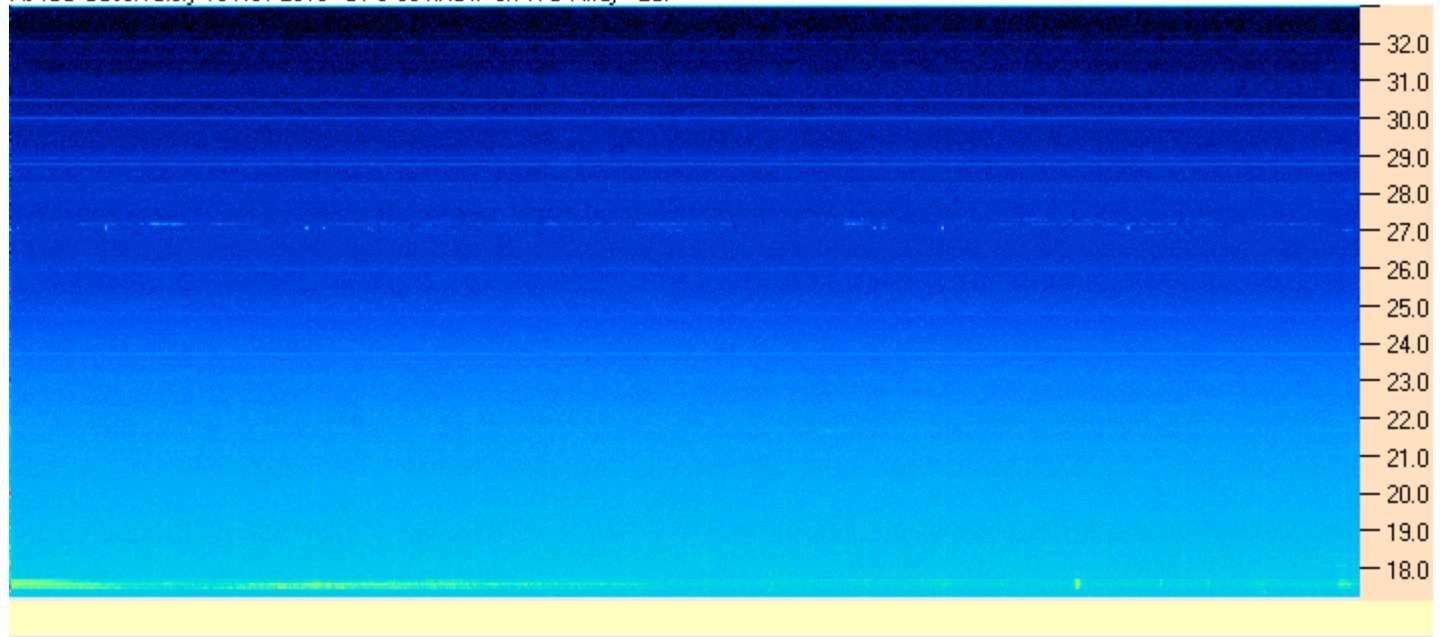




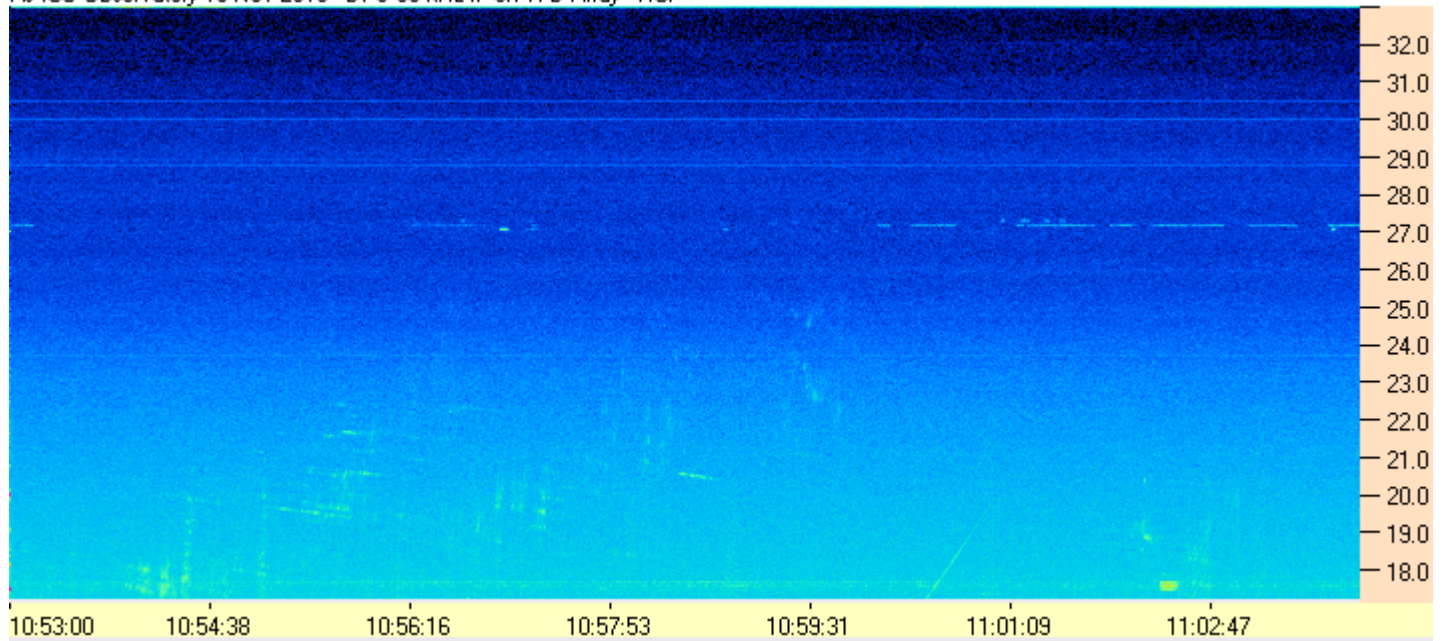
AJ4CD Observatory 19 Nov 2013 - DPS 60 kHz IF on TFD Array - RCP



AJ4CO Observatory 19 Nov 2013 - DPS 60 kHz IF on TFD Array - LCP



AJ4CO Observatory 19 Nov 2013 - DPS 60 kHz IF on TFD Array - RCP



AJ4CO Observatory 19 Nov 2013 - DPS 60 kHz IF on TFD Array - LCP

