

**Subject:** [radiojove-data] 07 Nov 2013 non-Io-A/C

**From:** Dave Typinski <davetyp@typnet.net>

**Date:** 11/08/2013 19:55

**To:** RadioJove-Data <radiojove-data@lists.nasa.gov>

Here's some weak non-Io-A/C from yesterday morning.

Barest hints of modulation lanes around 0705 UTC. Mostly RCP. Emission barely up to about 20 MHz.

Jupiter was 23° to 56° off axis.

Jupiter was leading the Sun by 115°.

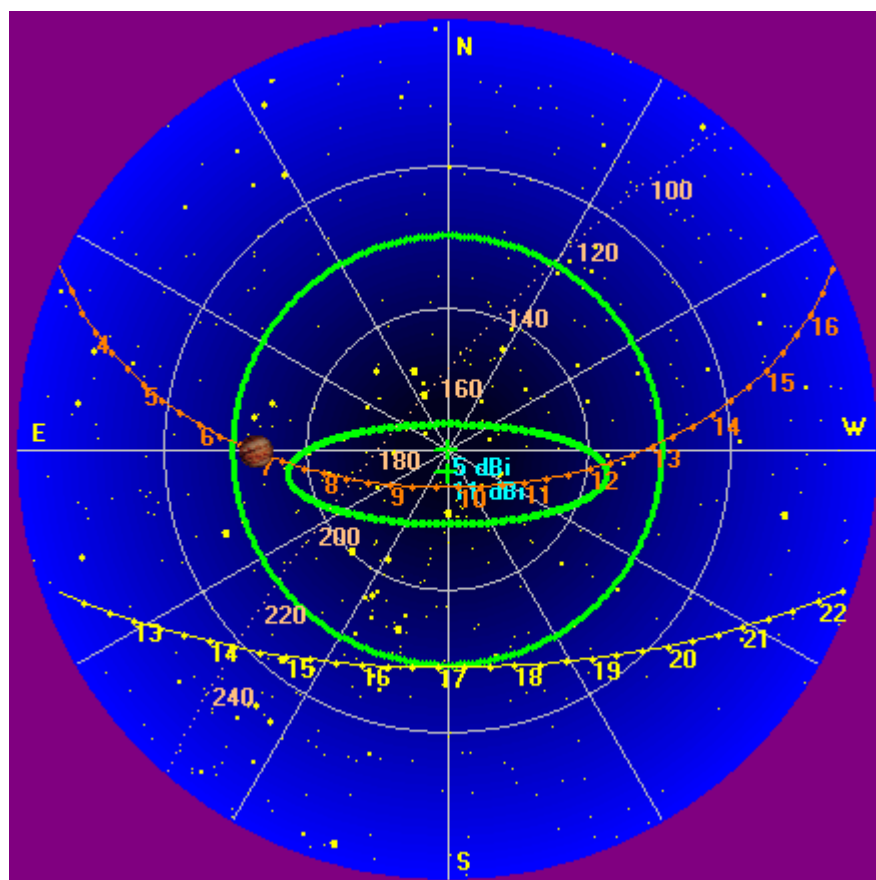
--

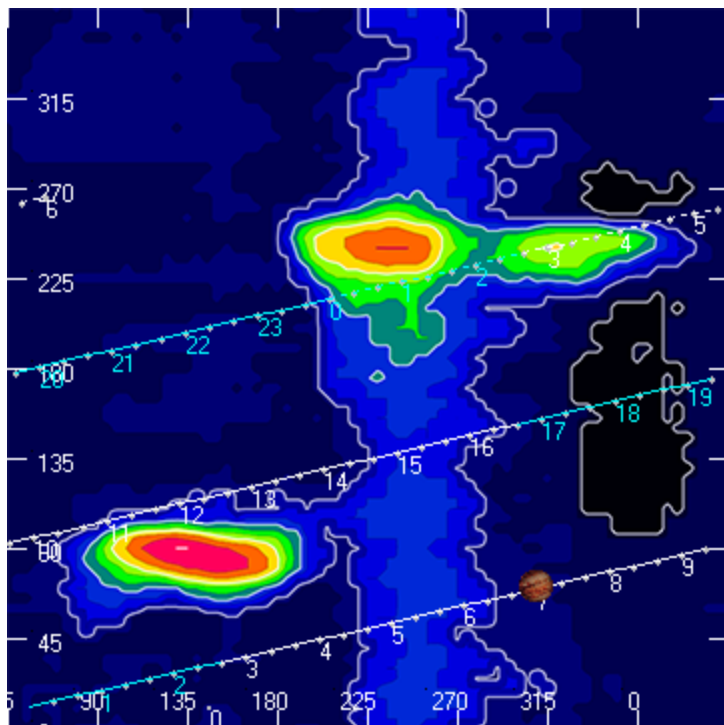
Dave

---

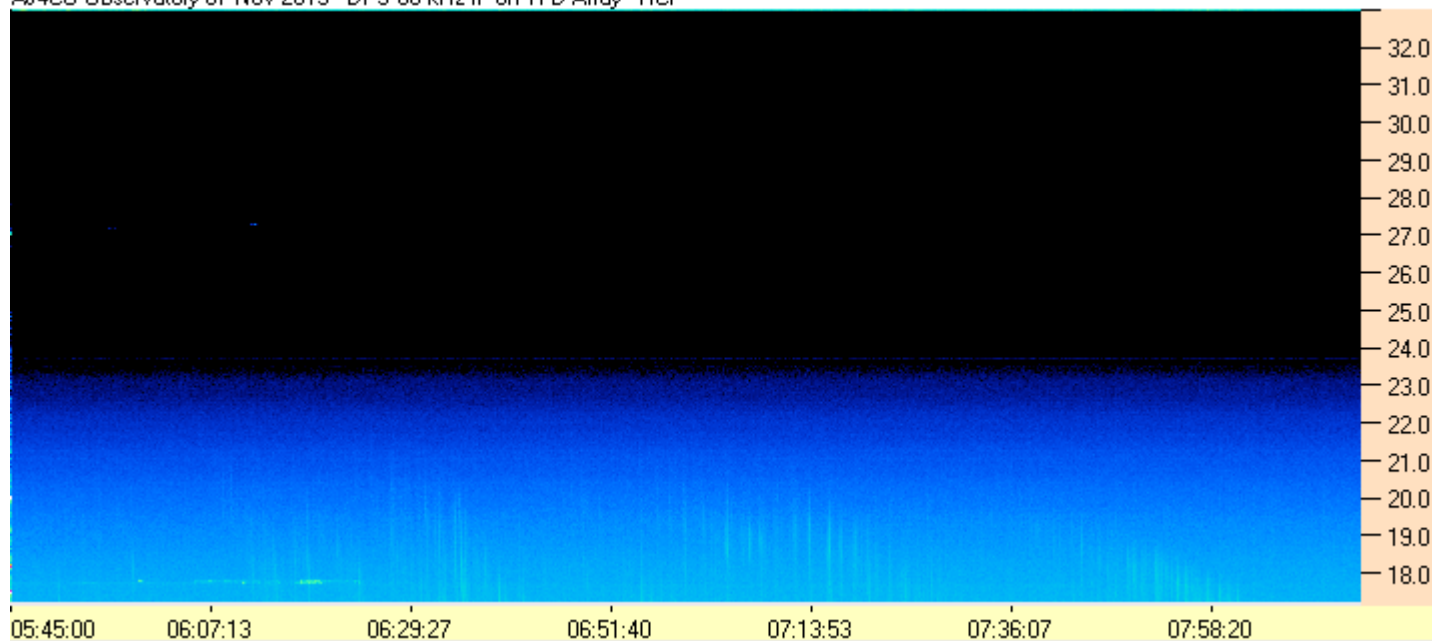
**AJ4CO Observatory, 07 Nov 2013**

---

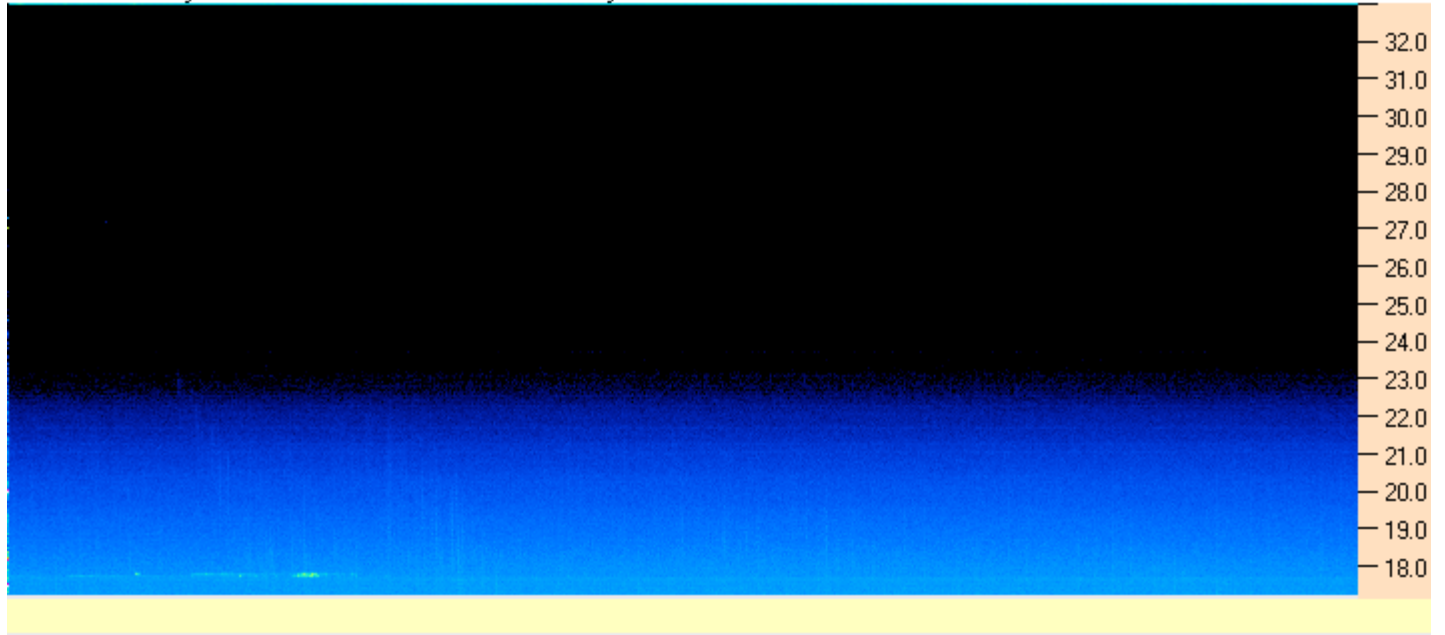




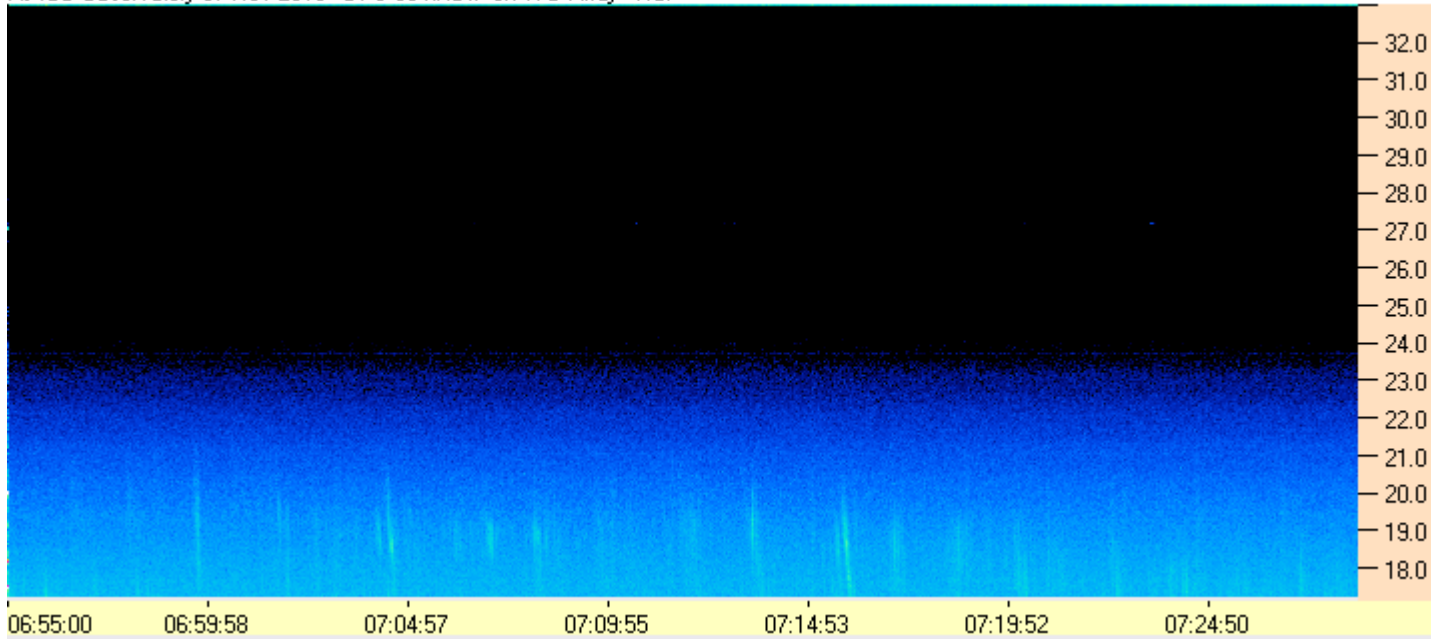
AJ400 Observatory 07 Nov 2013 - DPS 60 kHz IF on TFD Array - RCP



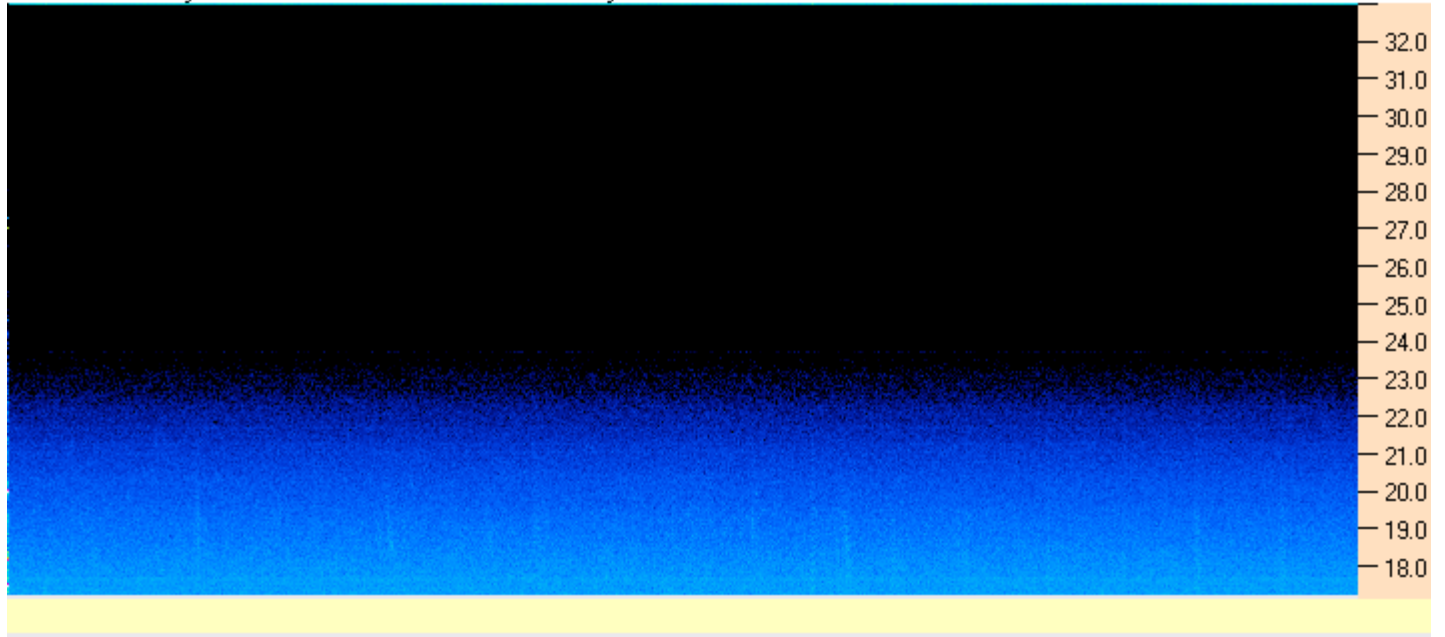
AJ4CO Observatory 07 Nov 2013 - DPS 60 kHz IF on TFD Array - LCP



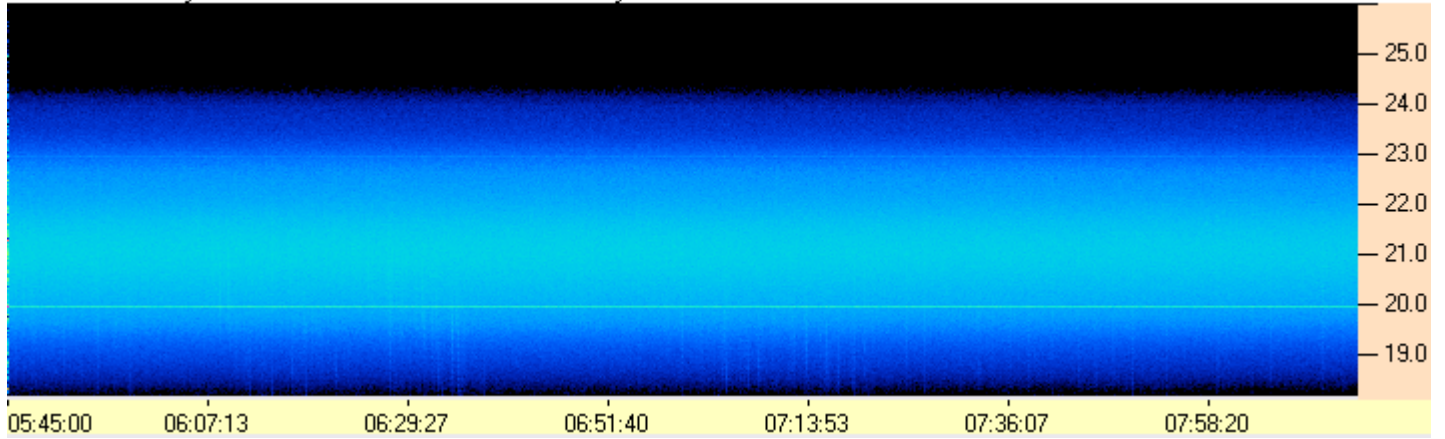
AJ4CO Observatory 07 Nov 2013 - DPS 60 kHz IF on TFD Array - RCP



AJ4CO Observatory 07 Nov 2013 - DPS 60 kHz IF on TFD Array - LCP



AJ4CO Observatory 07 Nov 2013 - FS-200 30 kHz IF on RJ Array



AJ4CO Observatory 07 Nov 2013 - FS-200 30 kHz IF on RJ Array

